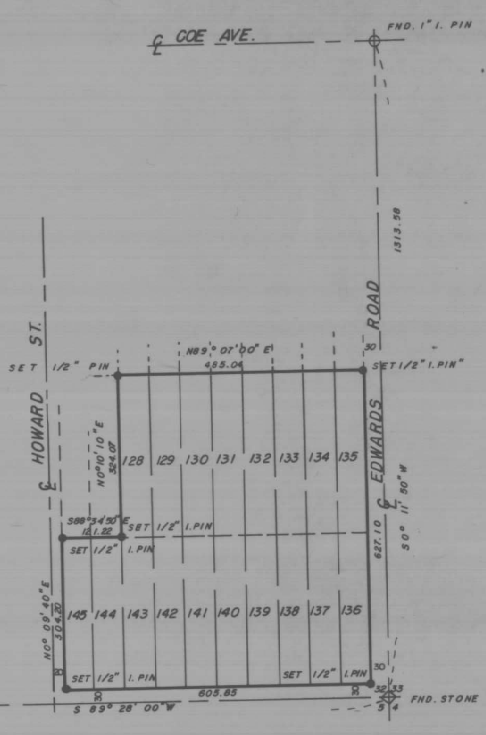


32 1/4 COR.
FND. BRASS CAP
5



NOTE: DISTANCES ARE FROM ORIGINAL
PLAT OF STANFIELD ORCHARD
OUTLOTS

BEARINGS ARE BASED UPON
 TIES TO N.G.S. STATION "STANFIELD
 E.B." THOSE SHOWN ARE TRUE.

REGISTERED
 PROFESSIONAL
 LAND SURVEYOR
 David N. Krambein
 OREGON
 DAVID H. KRUMBEIN
 933

402932 DD

SURVEY FOR			
LEO REUBER, LOTS 128 THROUGH 145, STANFIELD ORCHARD OUTLOTS, STANFIELD, ORE.			
WAYNE HARRIS CO. INC I-190-A			
ENGINEERS SURVEYORS PENDLETON OREGON			
SCALE	1"=150'	DRN. BY	D.E.S.
DATE	7/22/74	CKD. BY	DNK
			DRNG. NO. 74-283A

I-190-A