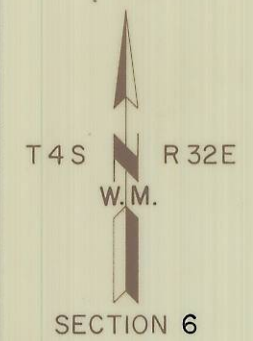
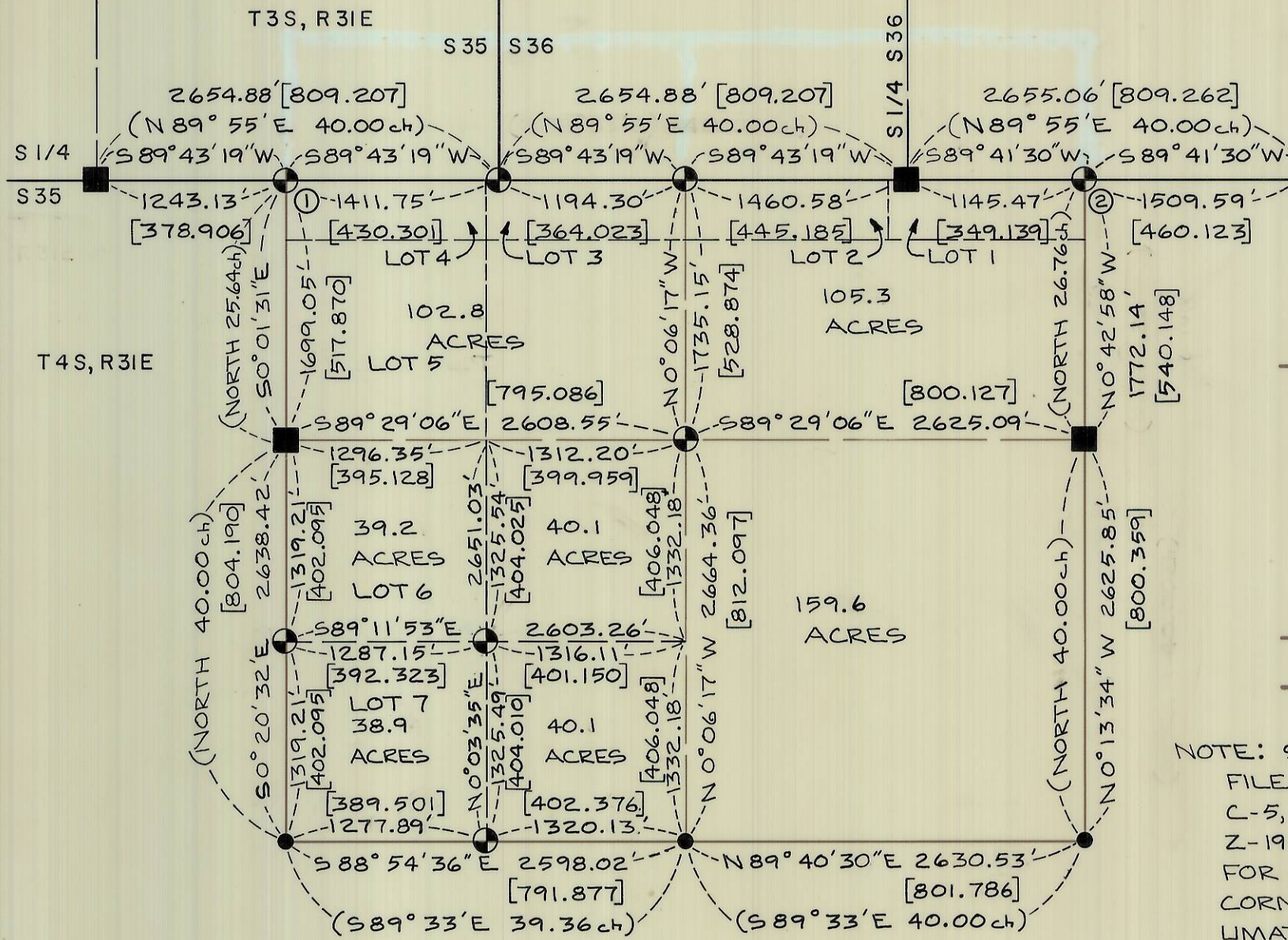


- ① INTERSECTED (21.24 ch WEST) OF S 35 & S 36 (1401.84')
- ② INTERSECTED (22.86 ch WEST) OF SE COR. S 36 (1508.76')



LEGEND

- FOUND CORNER (BRASS CAP)
- ⊕ SET MONUMENT AS DESCRIBED ON ATTACHED U.S.F.S. FORM R 6-7100-57
- () RECORD DATA FROM ORIGINAL SURVEY
- [] METERS
- FOUND ORIGINAL CORNER EVIDENCE AND SET MONUMENT AS DESCRIBED ON ATTACHED U.S.F.S. FORM R 6-7100-57.

BASIS OF BEARING

POLARIS OBSERVATION AT EASTERN ELONGATION. OCTOBER 19, 1977

MEAN MAGNETIC DECLINATION

N 20° 00' E

NOTE: SEE FORM 7100-57 WITH INDEX FILE NUMBERS A-1, A-3, A-5, C-1, C-3, C-5, D-1, D-2, E-2, (T4S R32E) AND Z-19, Z-21, Z-23, Z-25 (T3S R31E), FOR ACCESSORY TIES TO ALL CORNERS SET. AS FILED WITH UMATILLA COUNTY SURVEYOR.

REFERENCE MATERIAL

FIELD BOOKS NO. 8 & 9

DESCRIPTION OF U.S.F.S. LANDS:

- LOTS 1, 2, 3, 4, 5, 6
- SE 1/4
- S 1/2 NE 1/4
- E 1/2 SW 1/4
- SE 1/4 NW 1/4

I, BARRY B. BARBOUR, a registered land surveyor in the State of Oregon, hereby certify that this plat and the notes hereon, or attached, are a correct representation of a survey I performed during October - December, 1977, for the U.S. Forest Service, in accordance with the Statutes of the State of Oregon and with the Articles of the Contract.

Barry B. Barbour

Barry B. Barbour
Registered Land Surveyor
Oregon License 1051

REGISTERED PROFESSIONAL LAND SURVEYOR

OREGON
OCT. 17, 1975
BARRY B. BARBOUR
1051

SECTION 6 T 4 S, R 32 E, W.M.	
U.S.F.S. UMATILLA NATIONAL FOREST	
SCALE 1" = 1000'	<p>anderson perry & associates, inc. engineering - surveying - materials testing LA GRANDE • ENTERPRISE • OREGON</p>
DATE	
SHEET NO.	

O-63-A A