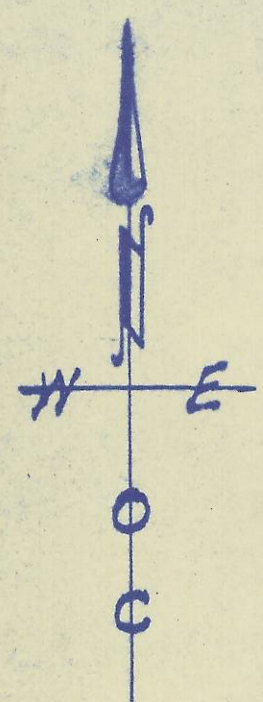


OR 19 G-435-A

Sec. 20 -
Sec. 21 -

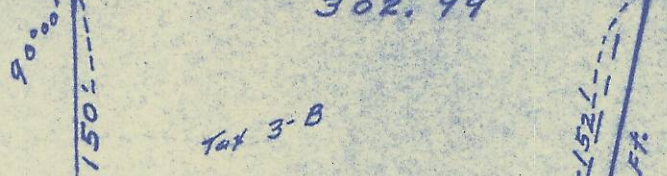
20.25 Ch = 1336.5'



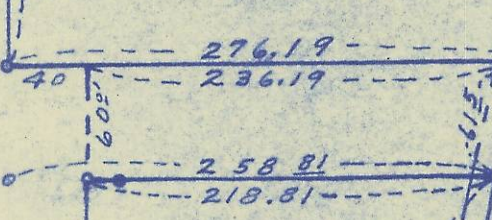
Tax-3

9.13 Ch. = 602.58 Ft.

299.59 302.99



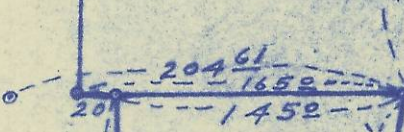
Tot 3-B



L.V. Corr.

259.5'

County Road No. 523



Tot 3-A

North - 289.3'

10.03 Ch. = 661.98 Ft.



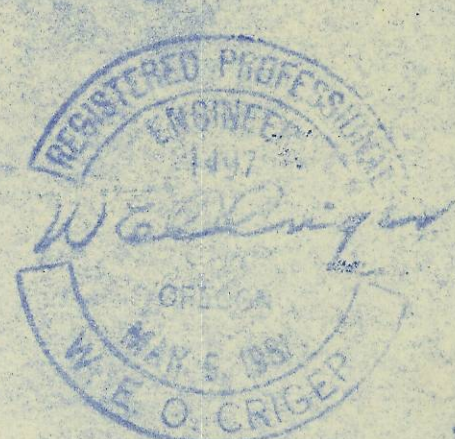
127.45'

N. 47° 12' E = 280.50 Ft.

County Road No. 523

N. 28° 23' E. 4.28 Ch = 282.78'

N. 23° 48' E. 4.69 Ch = 305.58'



Map showing
descriptive tracts in
N.W/4 of Sec. 21, T. 2 N., R. 32 E. W.M.
Surveyed, staked + plotted - June 1955
By W. E. O. Criger -
Scale: 1" = 100'

1