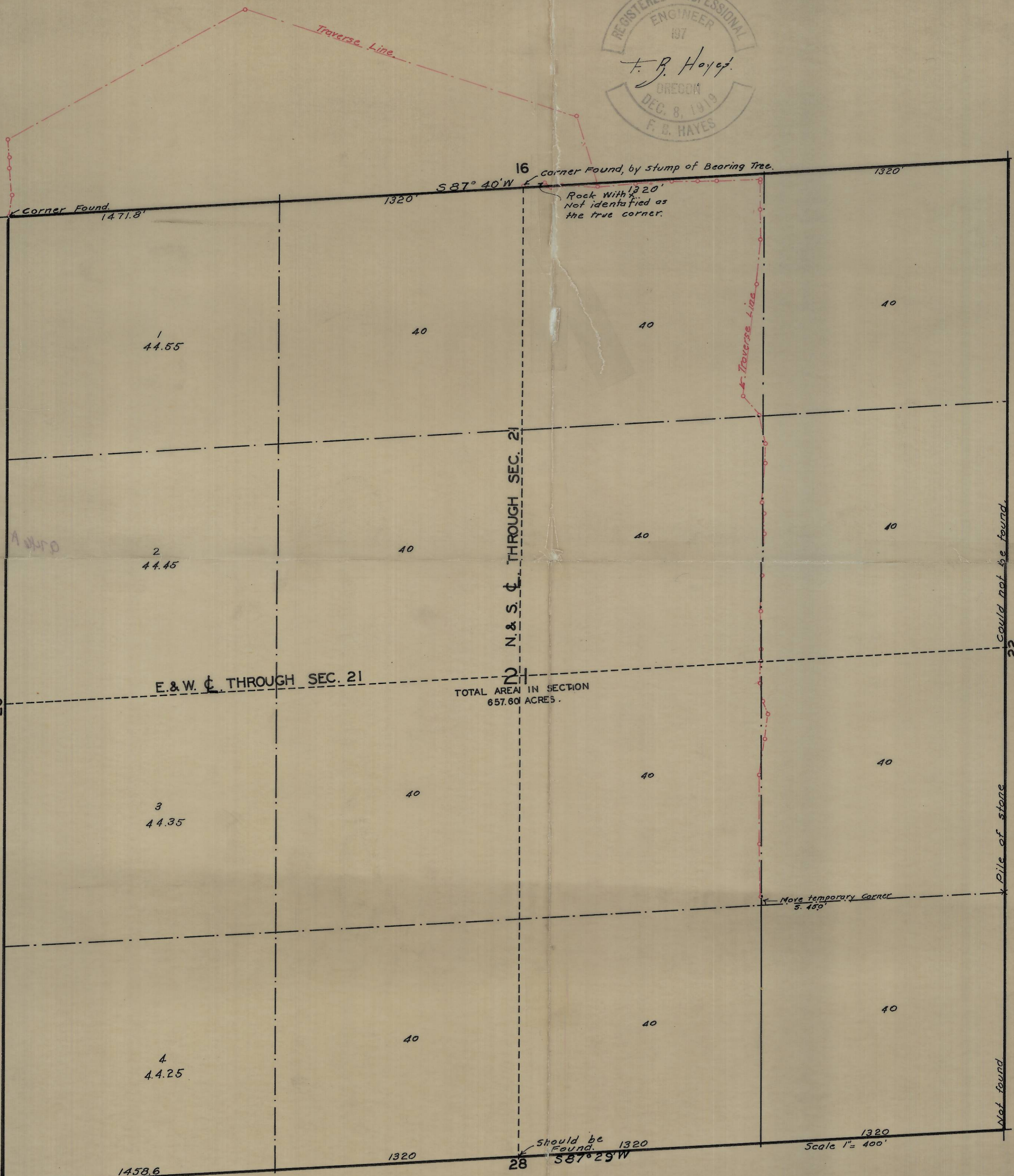


MAP OF SECTION 21, T. 4, N. R. 37, E.W.M.



Traverse Line



16 corner Found, by stump of Bearing Tree.

Rock with 1320' Not identified as the true corner.

Corner Found. 1471.8'

1  
44.55

2  
44.45

3  
44.35

4  
44.25

N & S  $\perp$  THROUGH SEC. 21

E & W  $\perp$  THROUGH SEC. 21

TOTAL AREA IN SECTION  
657.60 ACRES.

Traverse Line

could not be found.

Pile of stone

Not found

Move temporary corner  
5.450'

should be Found. 1320'  
S 87° 29' W

Scale 1" = 400'