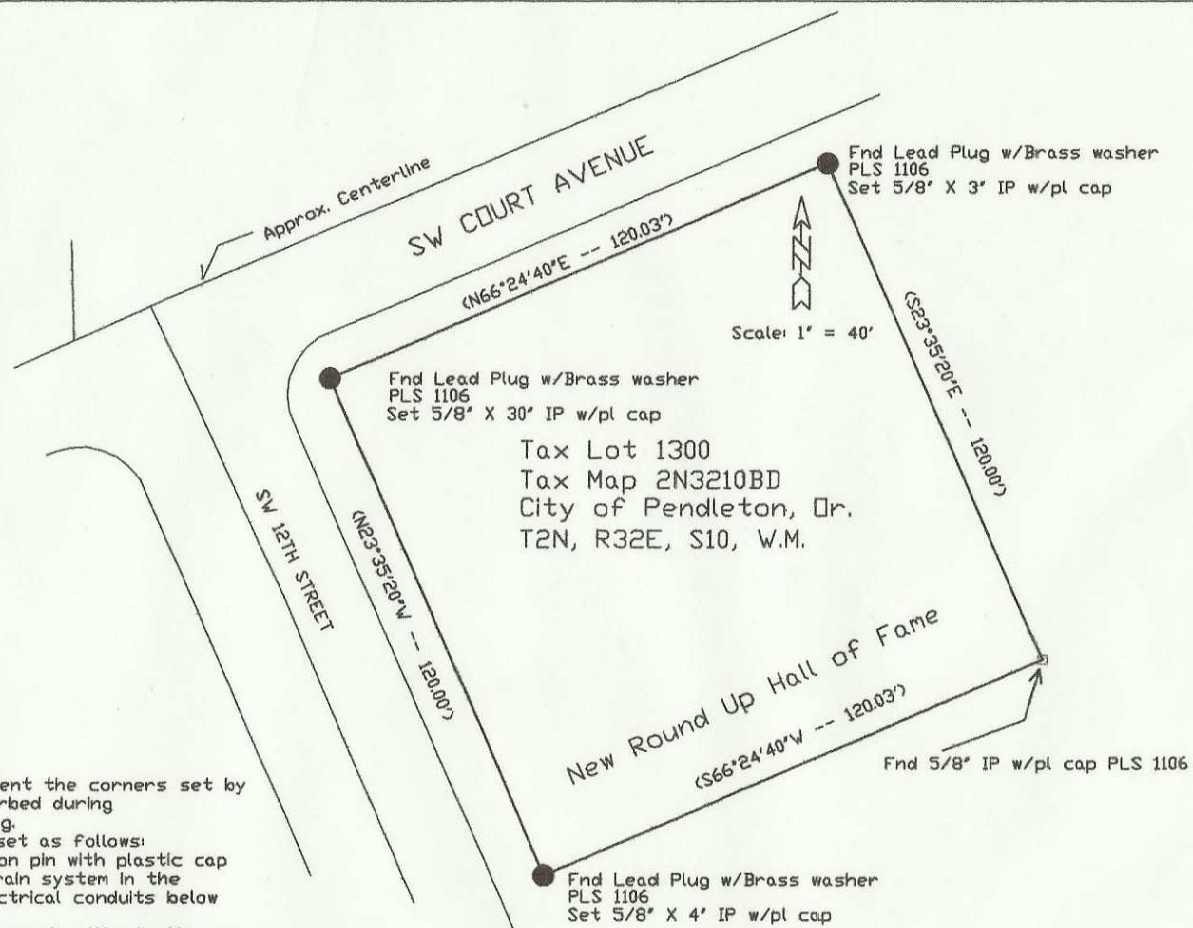


REGISTERED
PROFESSIONAL
LAND SURVEYOR

Robert D. English

OREGON
JANUARY 11, 2005
ROBERT DOUGLAS ENGLISH
43406LS

EXPIRATION DATE: 12/31/05



Narrative

The purpose of this survey was to remonument the corners set by VRWells in survey 04-126-B which were disturbed during construction of the new Hall of Fame building.

The Found Corners were referenced and reset as follows:
At the Northeasterly corner a 5/8" X 3" iron pin with plastic cap was grouted into the sidewalk. There is a drain system in the bottom of the sidewalk and high voltage electrical conduits below the sidewalk.

At the Northwesterly corner a 5/8" X 30" iron pin with plastic cap was set in the sidewalk.

At the Southwesterly corner a 5/8" X 4" iron pin with plastic cap was grouted into the sidewalk. There is a metal roof drain system in the lower portion of the sidewalk in this area.

The 1-1/4" Plastic caps are stamped "OR PLS 43406"

Basis of Bearings

SURVEY 04-126-B was held as
the basis for the remonumentation.

Legend

- Monuments set as noted.
- Monuments found as per Survey 04-126-B

RUPHallOfFame05

DRAWN BY: RDEnglish	APPROVED BY:	REVISIONS RECEIVED BY	PROJECT	Columbia Basin Construction, Inc.	SHT. NO.
DATE: October 13, 2005	PROJ. NO.	Umatilla County Surveyor	Round UP Hall of Fame	P.O. Box 382	
DWG. NO.: RUpHallOfFame2005	DWG.	Date 12-05	SW Court Ave.	Pendleton, Or. 97801	
		Rec'd By KR	Pendleton, Or. 97801	RobertDEnglish ORPLS 43406	
		No. 05-210-Ax			