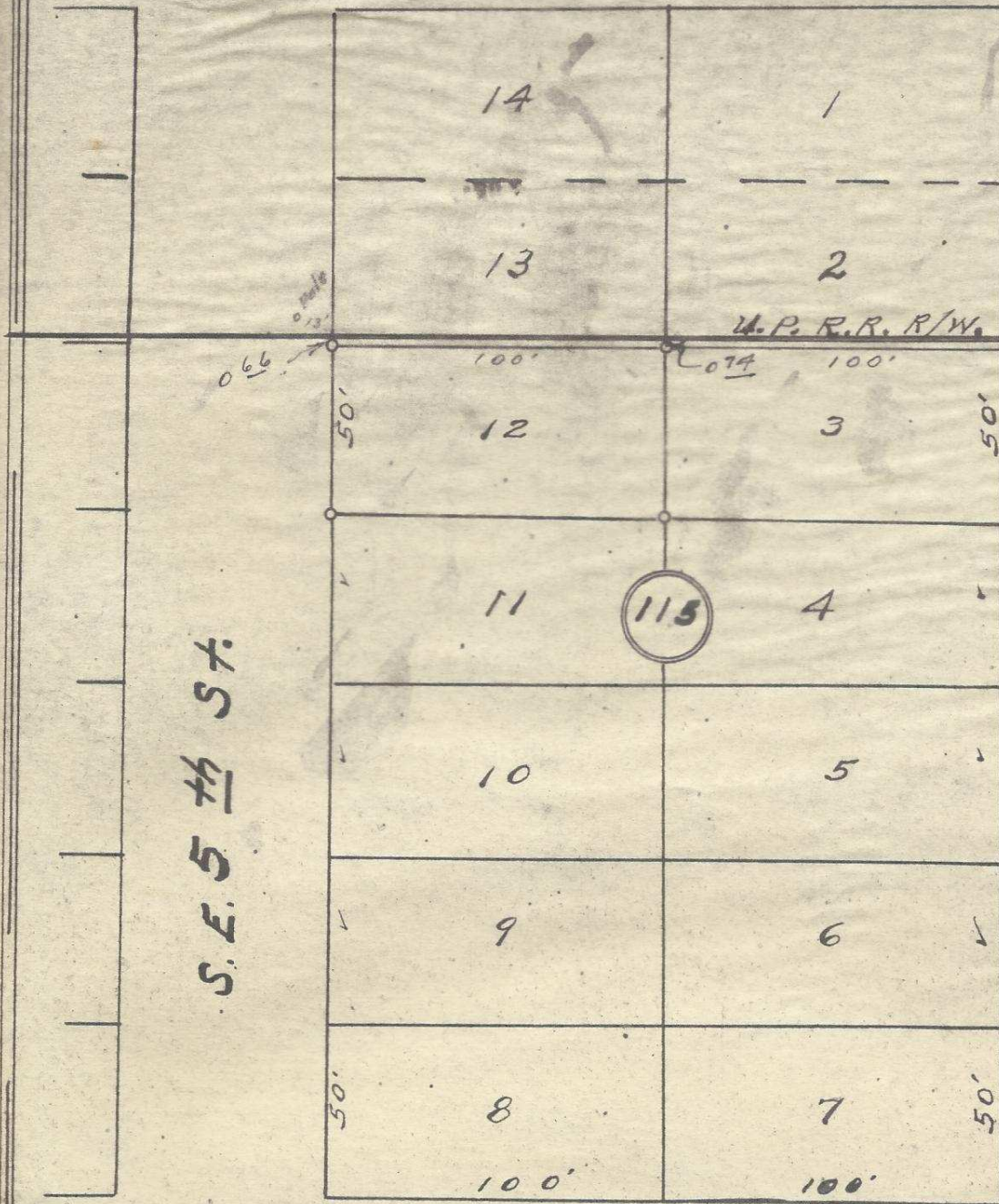


S.E. Frazier Ave



Plat of  
 Block 115 of  
 Reservation Addition  
 to the town, now City  
 of Pendleton, Oregon.  
 Surveyed, staked & platted  
 Nov. 1955 - By W.E.O. Criger  
 Scale: 1 inch = 50 feet

S.E. 5th St.

S.E. 6th St.

S.E. Goodwin Ave.



2NS211BD

06-92-AV

James Barber

3