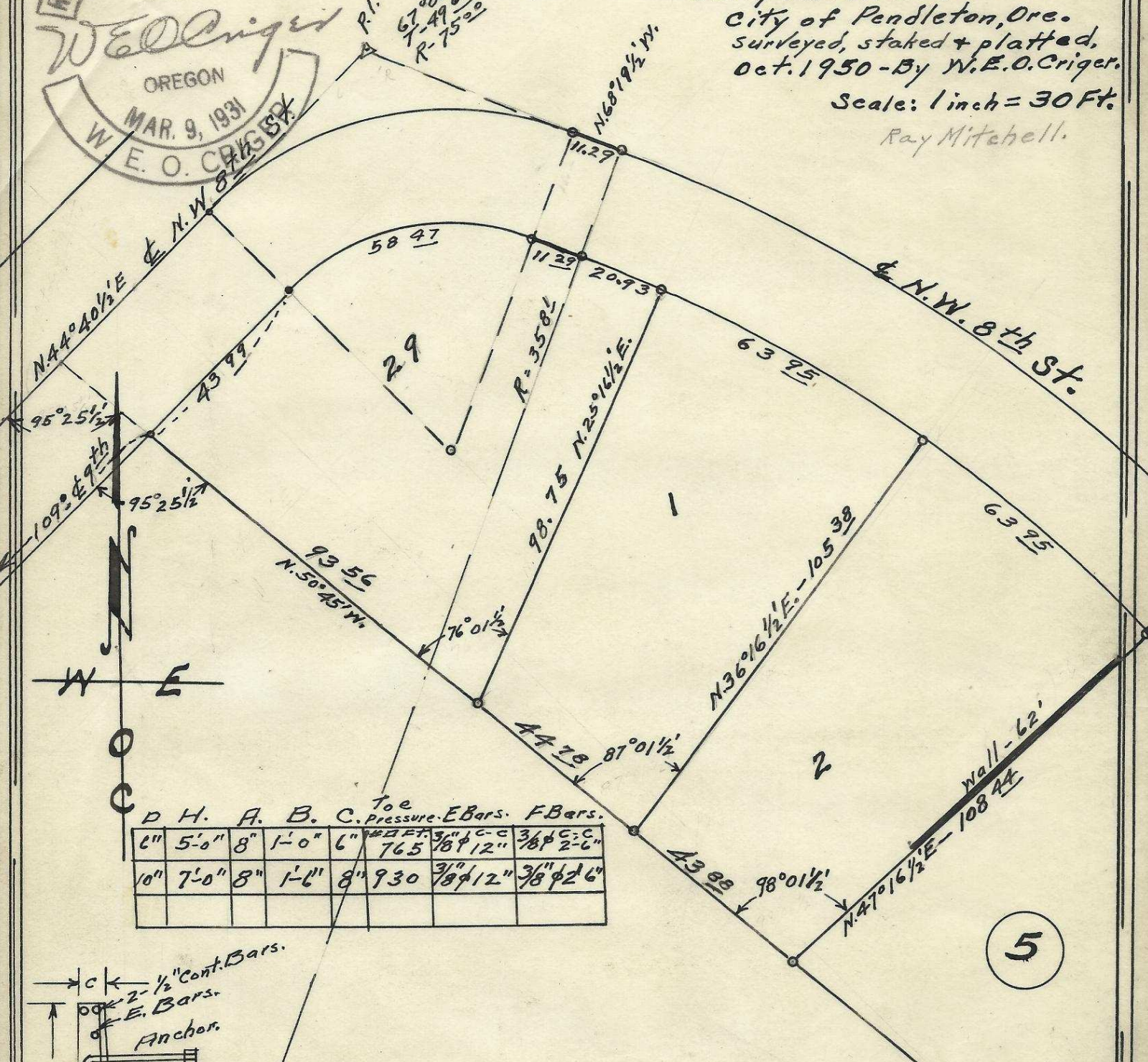
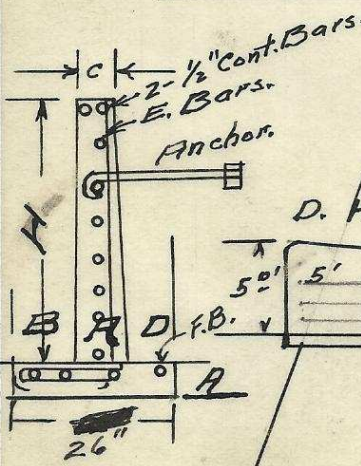


Plat showing  
 a portion of Block 5 of  
 Curry's Addition to the  
 City of Pendleton, Ore.  
 surveyed, staked & platted,  
 Oct. 1950 - By W. E. O. Criger.

Scale: 1 inch = 30 Ft.  
 Ray Mitchell.



D	H.	A.	B.	C.	Toe Pressure	E Bars	F Bars
6"	5'-0"	8"	1'-0"	6"	765	3/8" φ 12"	3/8" φ 2'-6"
10"	7'-0"	8"	1'-6"	8"	930	3/8" φ 12"	3/8" φ 2'-6"



D. H. A. B. C.  
 2032 3DB  
 5' 18' 20' 36' Anchors  
 1 - 3/8 Bars - 18'  
 1 - " " - 30'  
 1 - " " - 36'  
 12 - 3/8 " - 3'  
 400# Form Lumber - Wire  
 2 1/2" Bars, 60ft.  
 3 3/8 " " 60"  
 6 C.C.Y.

06-93-Ax

5