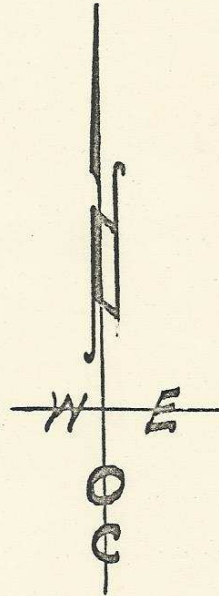
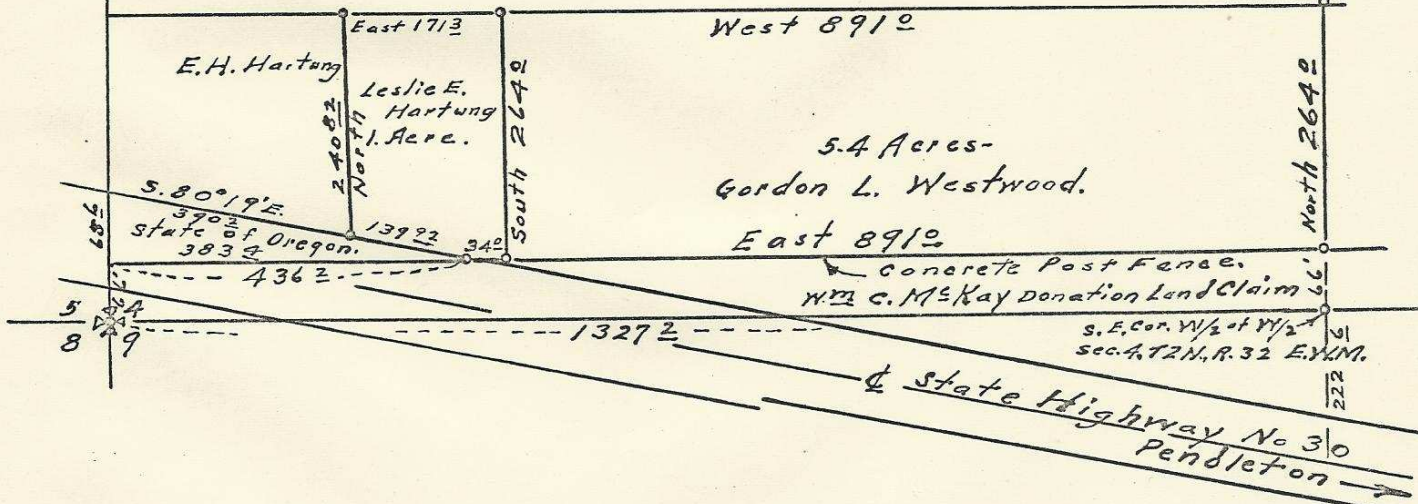


W/2; W/2



Concrete Post Fence Line.
East Line of W/2 of W/2



Plat
of

Also showing tract conveyed to Leslie E. Hartung and Dorothy J. Hartung } A Portion of the W/2 of the W/2 of Section 4 T. 2 N., R. 32 E. 1/4 M. in the County of Umatilla Oregon. of Land Conveyed by Edward H. Hartung and Elizabeth M. Hartung to Gordon L. Westwood. surveyed and platted December 1951. By H. L. Melton, Reg. Prof. Engr. Ore. No. 1337. scale: 1" = 200'

06-109-A8