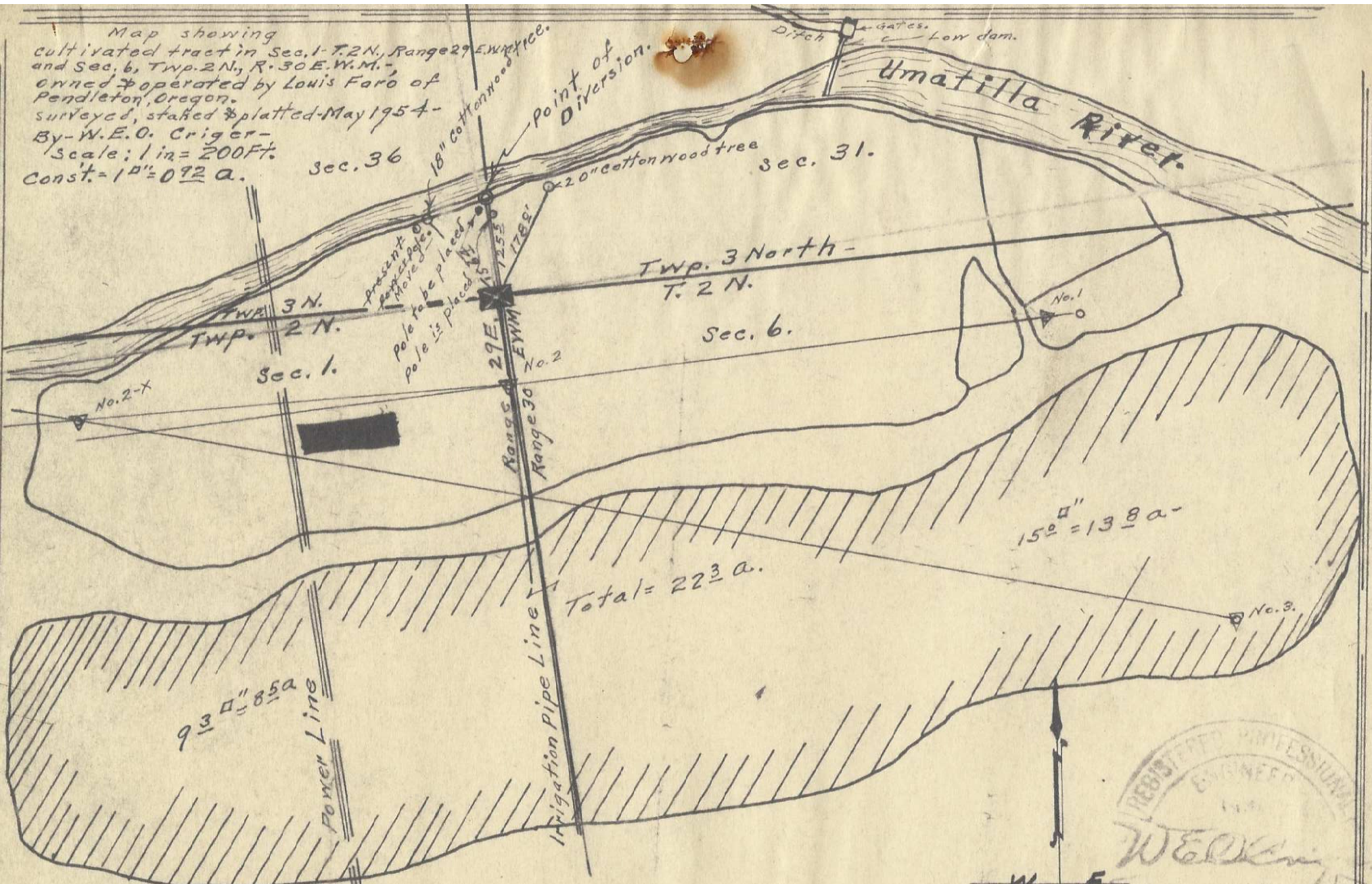


Map showing cultivated tract in Sec. 1, T. 2 N., Range 29 E. W. M. 1000' and Sec. 6, Twp. 2 N., R. 30 E. W. M. 1000', owned & operated by Louis Faro of Pendleton, Oregon, surveyed, staked & platted May 1954 - By - W. E. O. Criger - Scale: 1 in = 200 Ft. Const. = 1" = 0.92 a.



I, W. E. O. Criger of Pendleton, Oregon do hereby certify that this map was made from notes taken during an actual survey made by me on May 3rd & May 4-1954; that the monument shown on this map, consisting of an iron pipe 3 Ft. long, with the top left 6 inches above the ground is: - N. 5° 45' W. From - S. E. Cor. Sec. 36 - T. 3 N., R. 29 E. 145° Ft.



06-133-A