

60

60

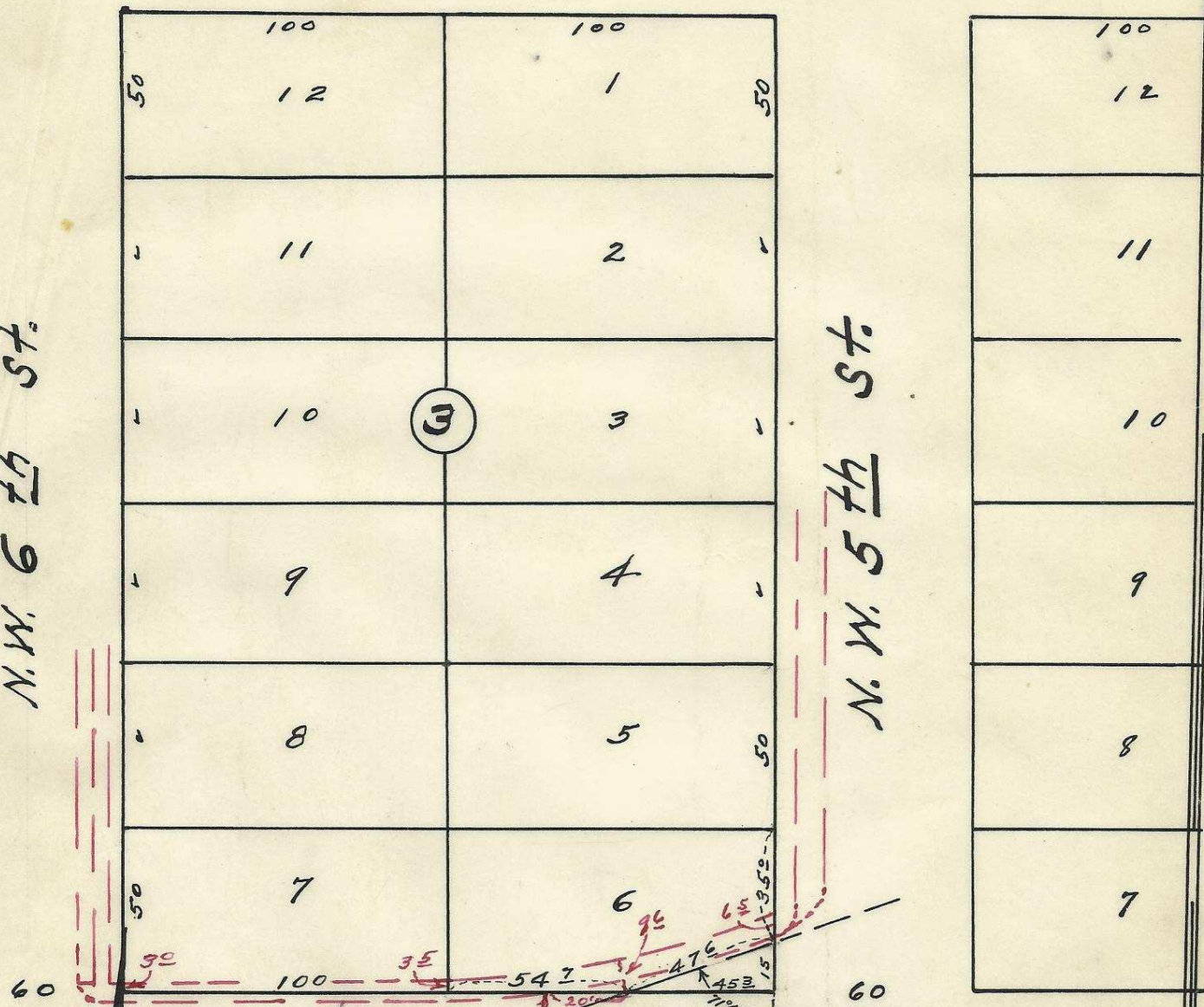
N. W. Carden Ave.

60

60

N. W. 6th St.

N. W. 5th St.



N. W. Bailey Ave.

2032 10AB

Plat of Raley's Addition to the
 Town, now City of Pendleton Oregon;
 as regards Block 3 of said Raley's
 Addition. Lots 5, 6, 7 & 8, surveyed, staked
 and platted - June 10, 1949 - By W. E. O. Criger

Scale: 1 inch = 50 Feet

06-166-A8



60

60