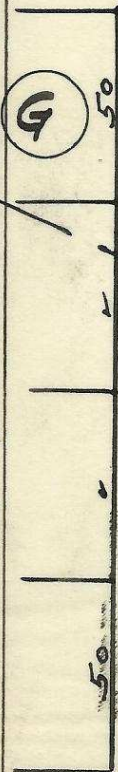
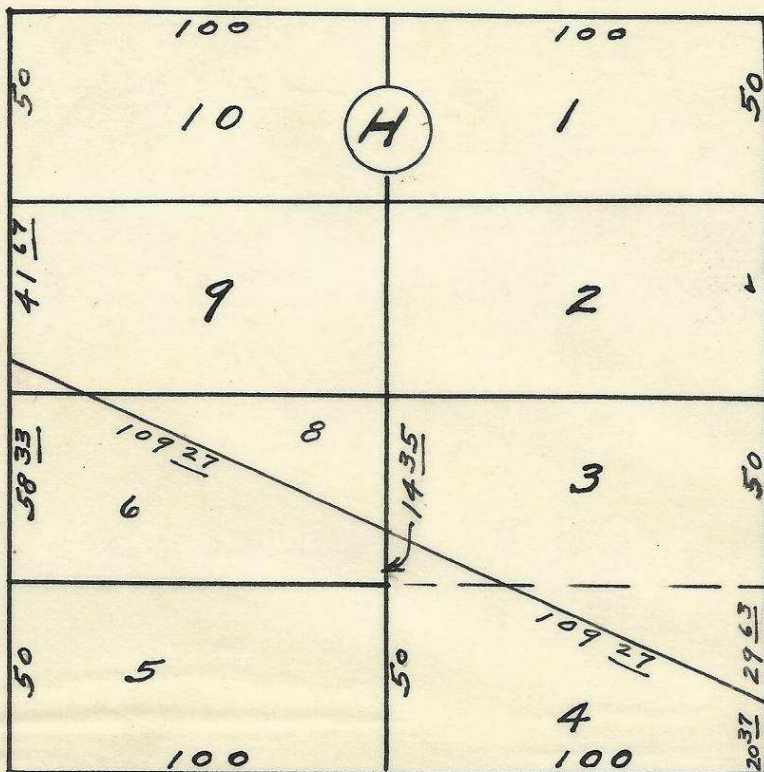


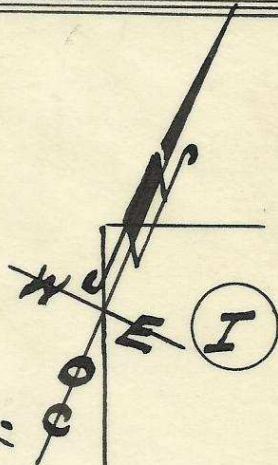
S.E. EMIGRANT AVE.



S.E. 2nd ST.



S.E. 3rd ST.



60

ST.

60

O.W.R. & N. R.R.

Plat of
 Block H of
 South Pendleton,
 (Add. to the town, now
 City of Pendleton, Oregon.
 Surveyed, staked & platted,
 July 1950 - By W. E. O. Criger.
 Scale: 1" = 50 Ft.



2032 11BB
 06-170-A8