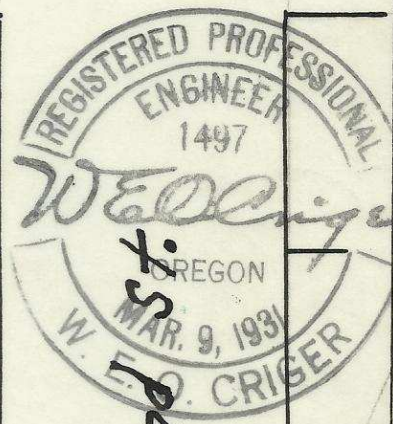
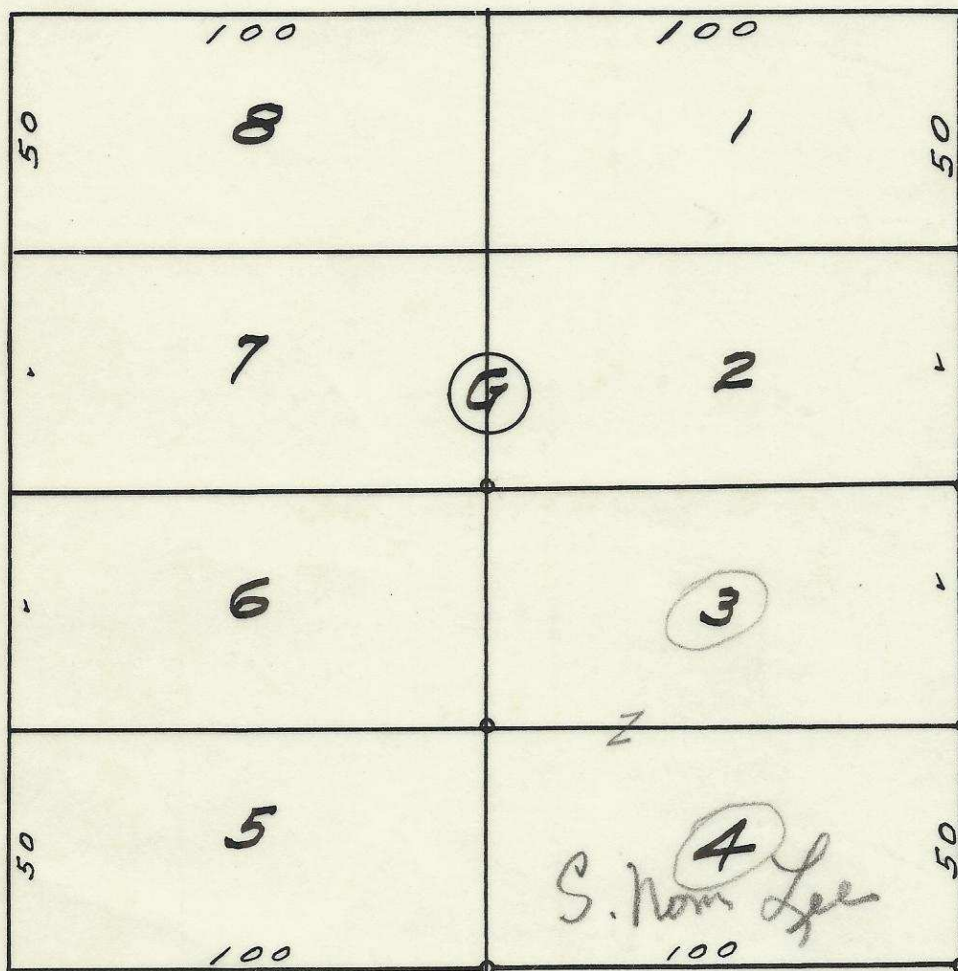


S. E. Emigrant Ave.



S. E. First St.

S. E. Second St.

S. E. Frazier Ave.

2N32 11BC

Plat showing
Block G of Original Town
City of Pendleton, Oregon.
Surveyed, Staked and platted
Oct - 1954
By W. E. O. Criger
Scale - 1 inch = 40 Feet.
06-128-Ax

4