

S. E. Byers

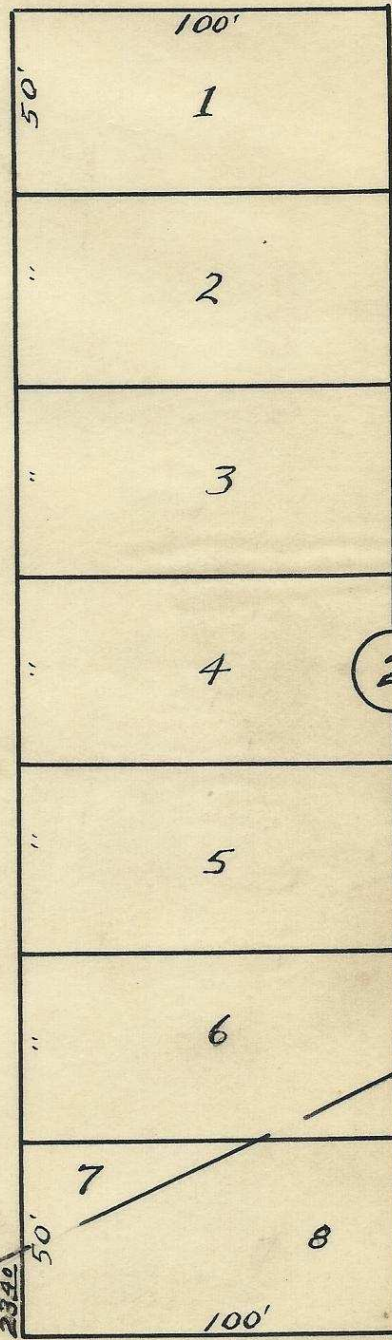
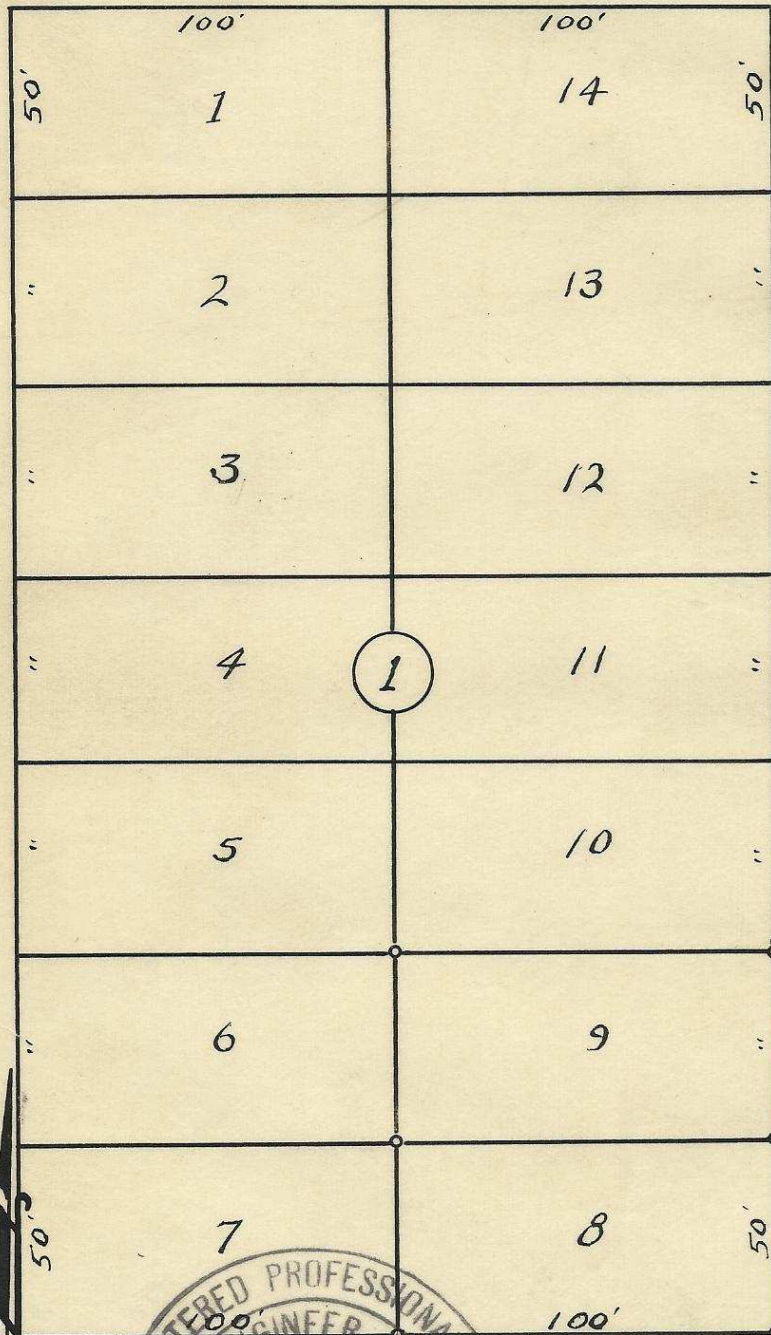
Ave.

50

50

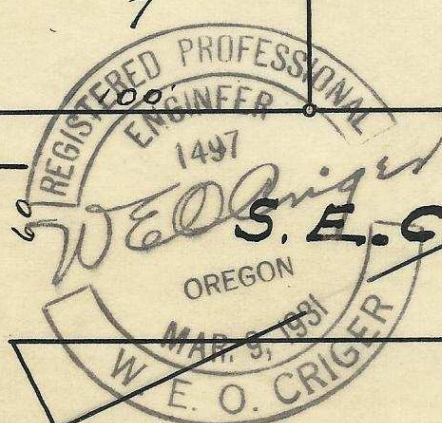
60

60



S. E. 6<sup>th</sup> St.

S. E. 7<sup>th</sup> St.



S. E. Court

Ave.

2N32 2CD

Plat showing Block 1 of Jacobs Addition  
 to the town, now City of Pendleton, Oregon.  
 Surveyed, staked, and platted - Mar. 1949.  
 By W. E. O. Criger. - Scale: 1 inch = 50 feet.

06-195-Ax