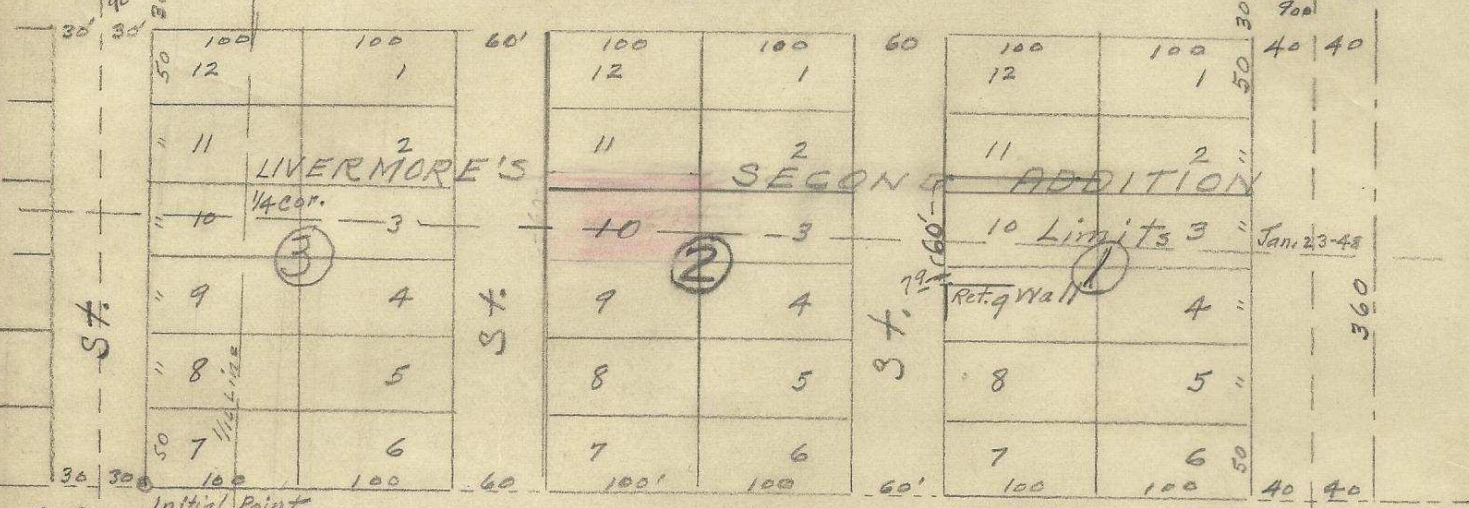


UNPLATTED

1120' GRANDVIEW AVE
790'

Stang Mon
90° 30'

Stang Mon
90° 30'

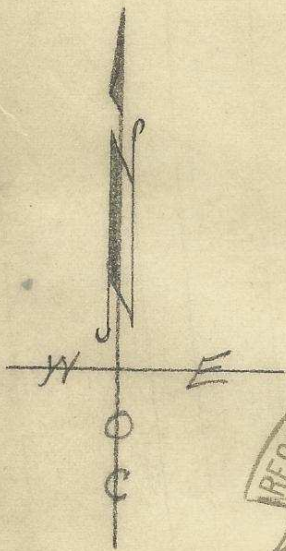


Gilliam Ave. N.W.

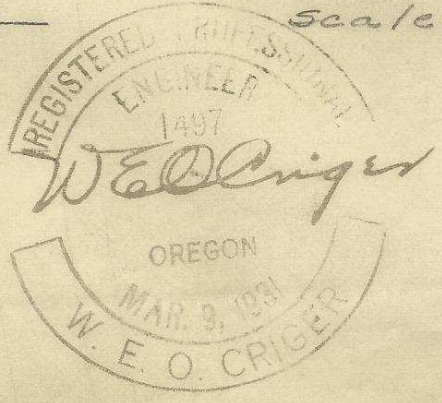
LIVERMORE'S

ADD'N.

N. MAIN ST.



Plat Showing
Part of Livermores Second Addition
To the town, now City of Pendleton, Oregon.
Scale: 1 inch = 150 Feet.



2 N 32 3 DD

06-210-Ax

