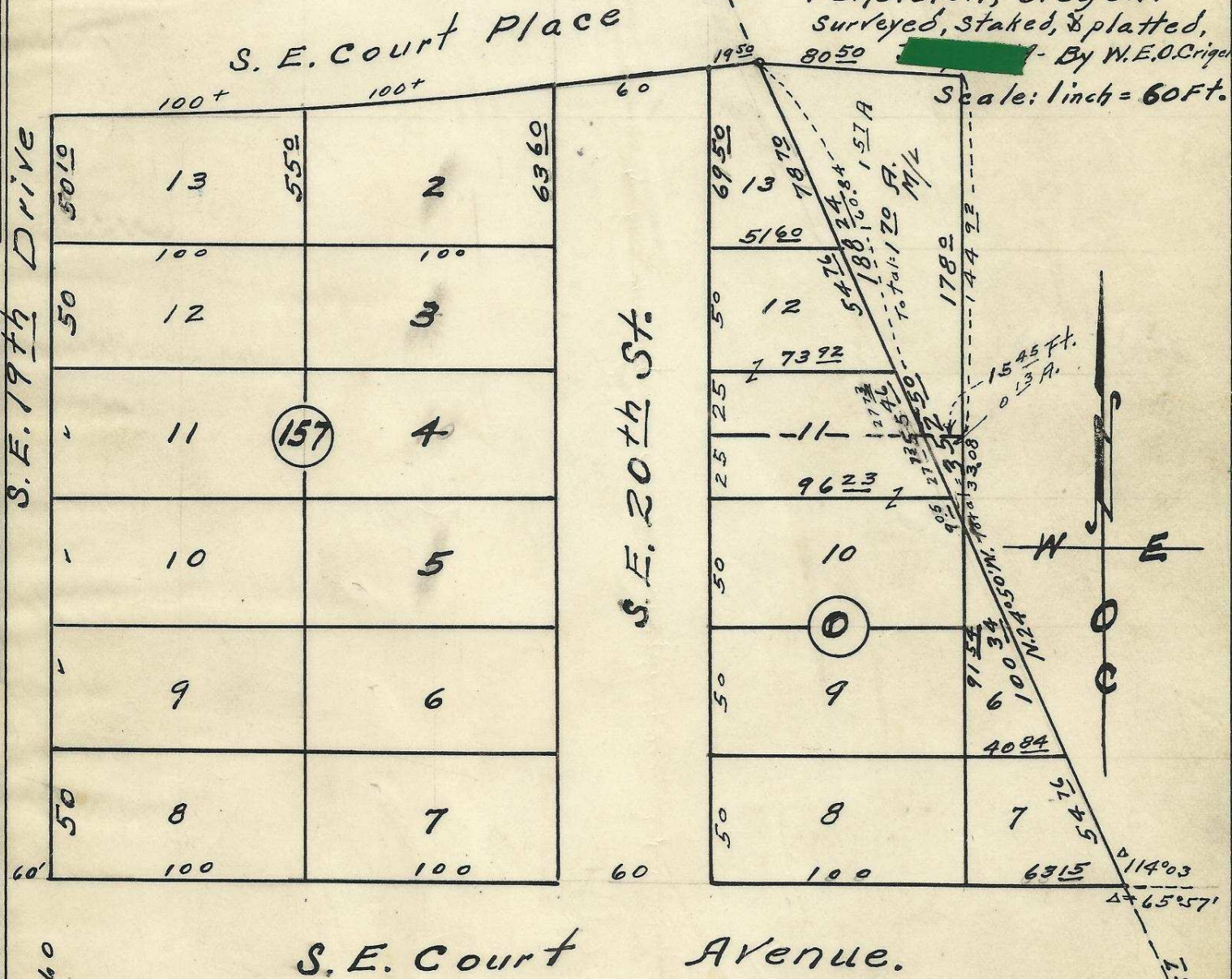




Plat Showing
Blocks 157 & 0 of
Reservation Addition
To the town, now City of
Pendleton, Oregon.
Surveyed, staked, & platted,
8050 [redacted] - By W.E.O. Criger.

Scale: 1 inch = 60 Ft.



2N32 12BB

06-238-Ax

Frank Dyer - 416 - S.E. 20th

(4)