

N.P.R.R.

N.P.R.W.

460

145 4A

52°

REGISTERED PROFESSIONAL  
ENGINEER  
1497

*W. E. Criger*

OREGON

MAR. 9, 1931

W. E. O. CRIGER

71.53

13 78 57

3168

50

12

54 7 1/2

5399

11

7630

10

9861

50

9

342

4603

8

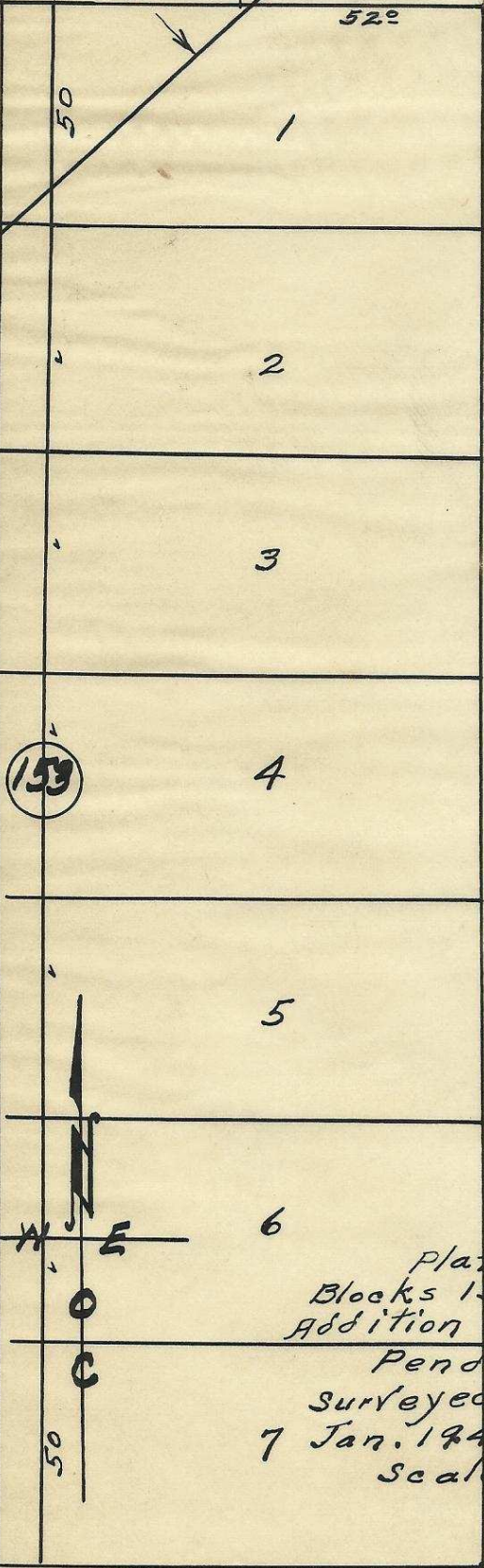
35

7

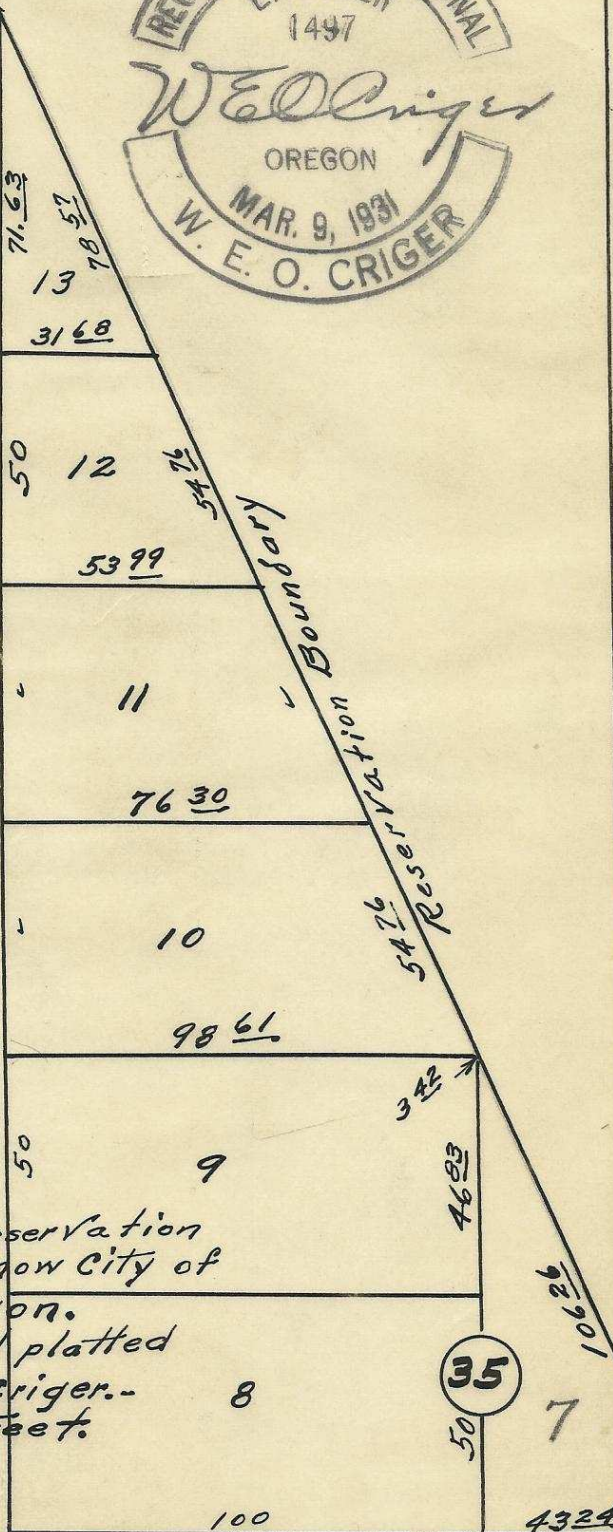
4324

50

(54)  
54 7 1/2



S. E. 19<sup>th</sup> St.



Plat showing  
 Blocks 153 & 35 of Reservation  
 Addition to the town, now City of  
 Pendleton, Oregon.  
 Surveyed, Staked and platted  
 7 Jan. 1949. By W. E. O. Criger.  
 Scale: 1 inch = 40 Feet.

06241-AX

S. E. Byers Ave.

2N32 2DD  
2N32 FCC

50