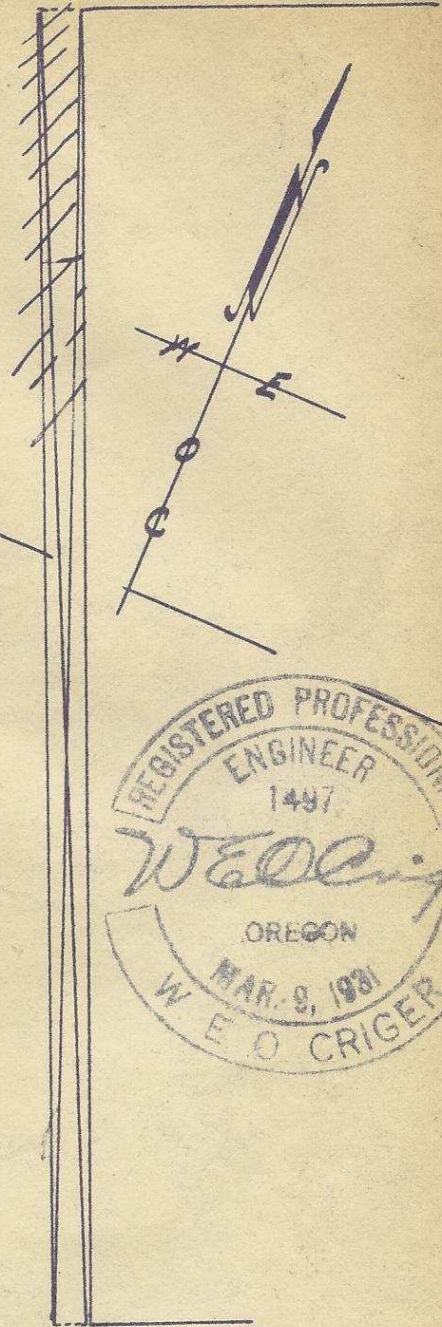
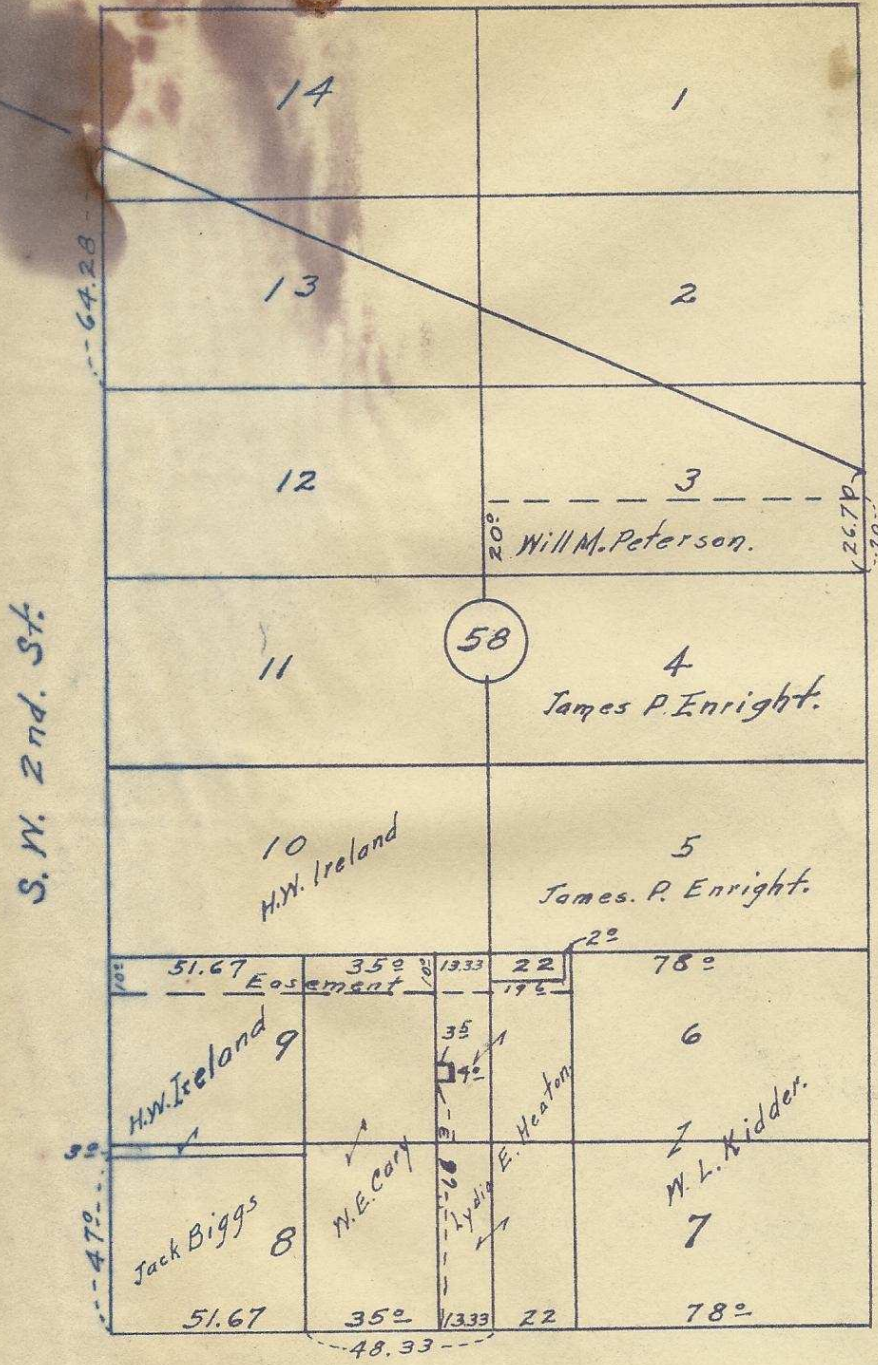


S. W. Dorion Ave.



S. W. Emigrant Ave.

2N32 10 4A



Plat of
 Block 58 of Reservation Addition
 to City of Pendleton, Oregon.
 Surveyed, staked & platted, May, 1948.
 By W. E. O. Criger. -
 Scale: 1 inch = 50 Feet.

06-258-Ax