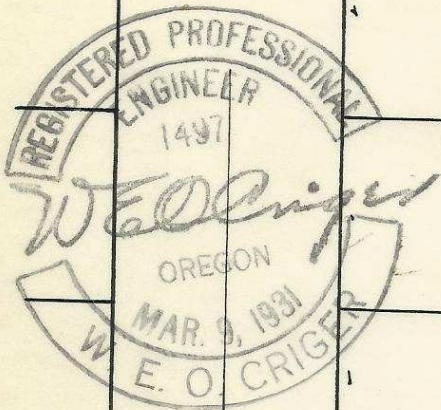
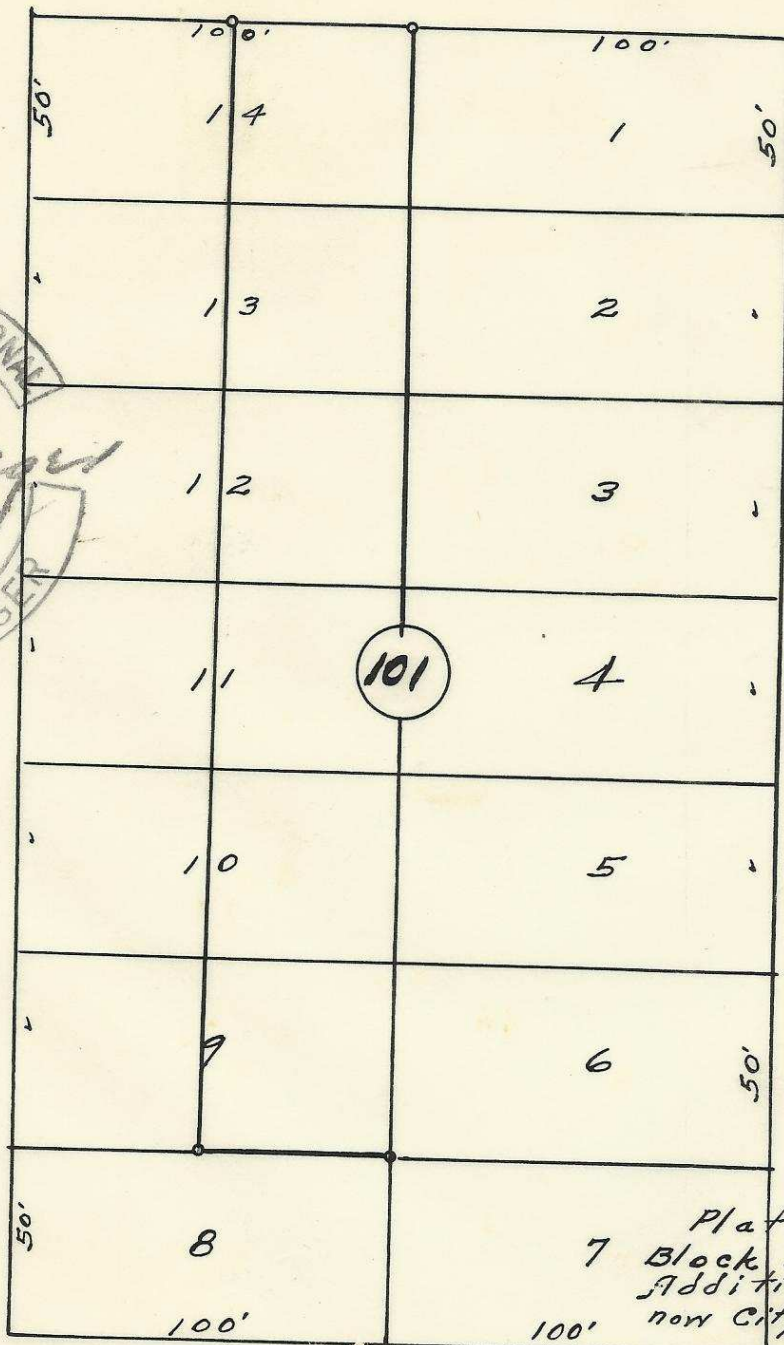


S.W. Frazier Ave.



S.W. 16th St.

S.W. 15th St.



Plat showing
7 Block 101 of Reservation
Addition to the town,
now City of Pendleton, Ore.

Surveyed, staked & platted
By - W. E. O. Criger.

Scale: 1 inch = 50 feet

S.W. Goodwin Ave

2N32 10CA

06-262-Ax