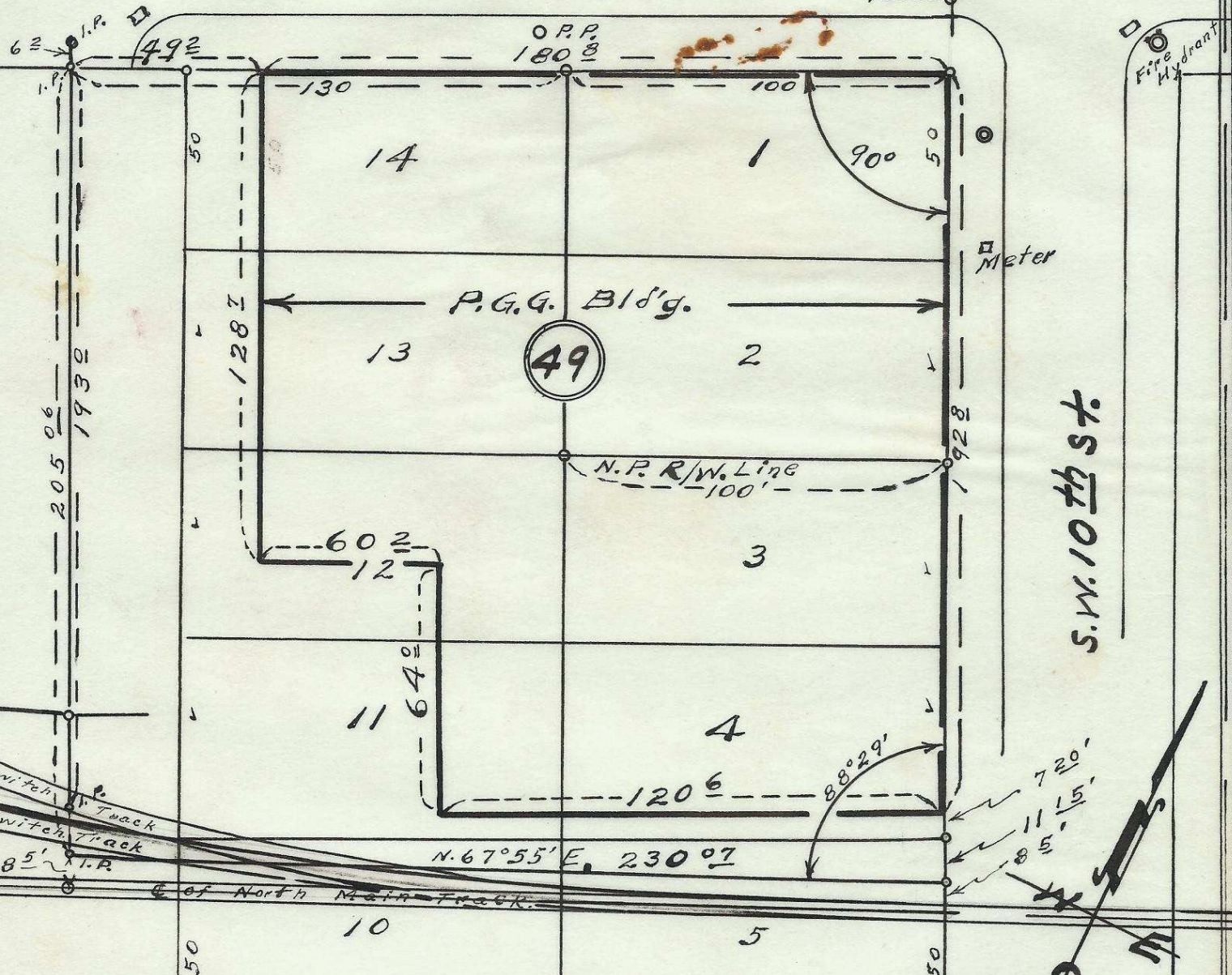


S. W. Dorian. Ave.

M.H. 8' deep

Valve



S.W. 10th St.

S.W. 11th St.



Plat showing
6
Portion of Block 49 of
Reservation Addition
to the town, now City of
Pendleton, Oregon.

2 N 32 10 AC Surveyed, staked & platted
7 Sept. - 1955 -
By W. E. O. Criger,
Scale: 1" = 40'

④ 06-270-Ax