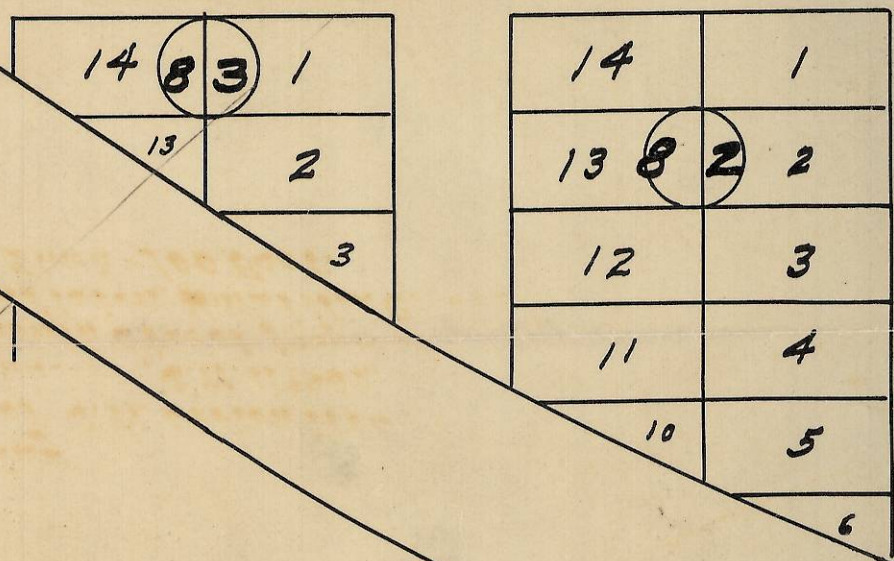


Monument No. 1. S.W. EMIGRANT AVE



Plat Showing
 Area in Vacinity of S.W. Dorion Ave.,
 S.W. Emigrant Avenue and S.W. 11th St., and
 Portion of S.W. Eleventh Street proposed
 to be vacated - Pendleton, Umatilla Co., Ore.
 Scale: Inch = 100 Feet.

2N3210 AC

06-272-Ax