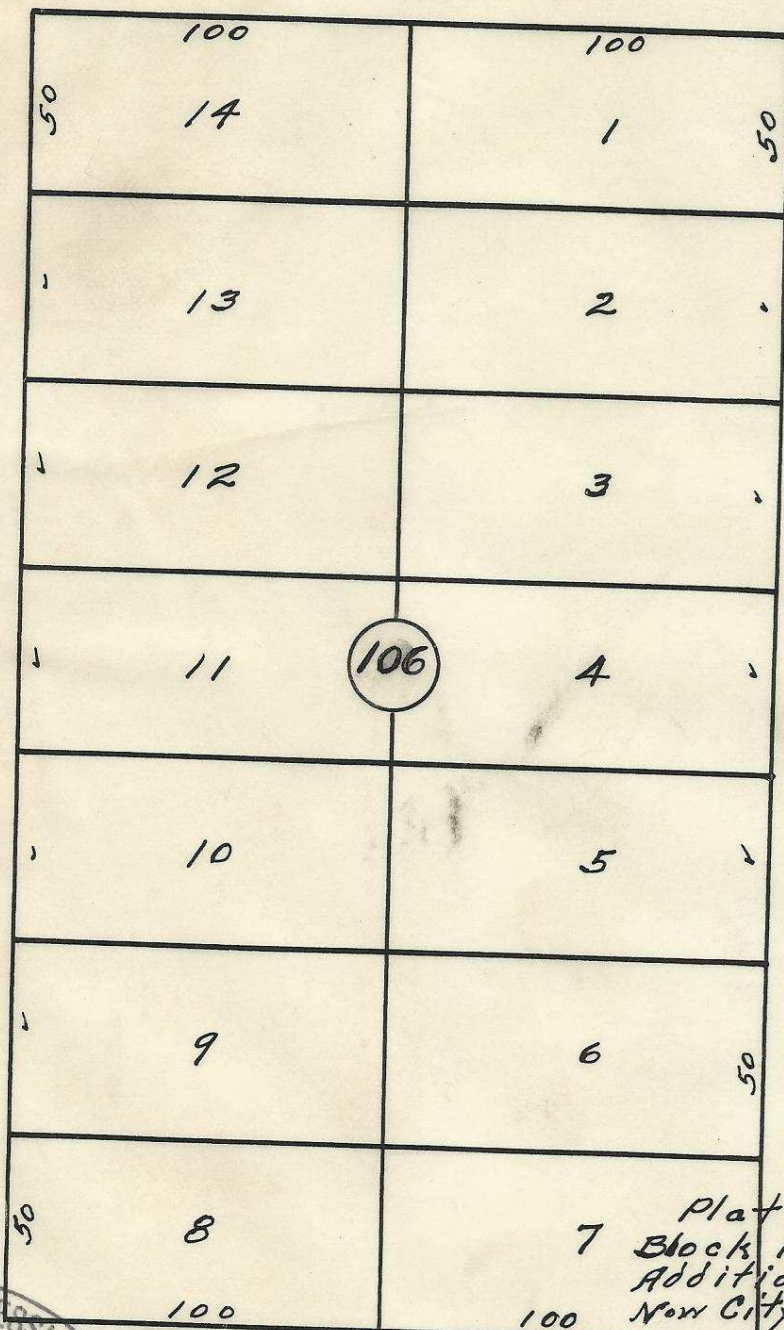


60

60

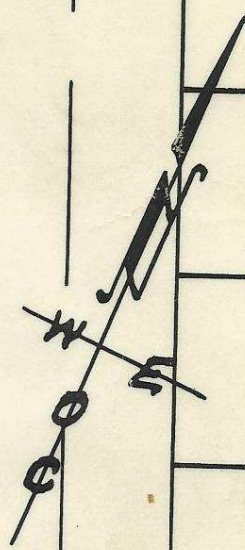
60

S. W. Frazier Ave



S.W. 11th St.

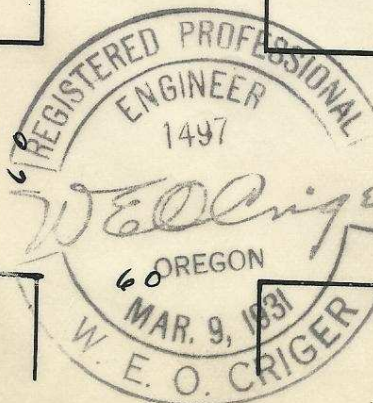
S.W. 10th St.



Plat showing  
 7 Block 106 of Reservation  
 Addition to the town,  
 Now City of Pendleton, Ore.

Surveyed, staked & platted,  
 April-1949 - By W.E.O. Criger  
 Scale: 1 inch = 50 Feet.

S.W. Goodwin Ave.



2N32 10 DB

60

06-276-Ax

Richardson-