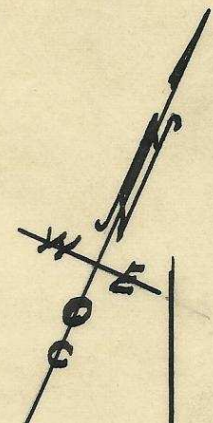
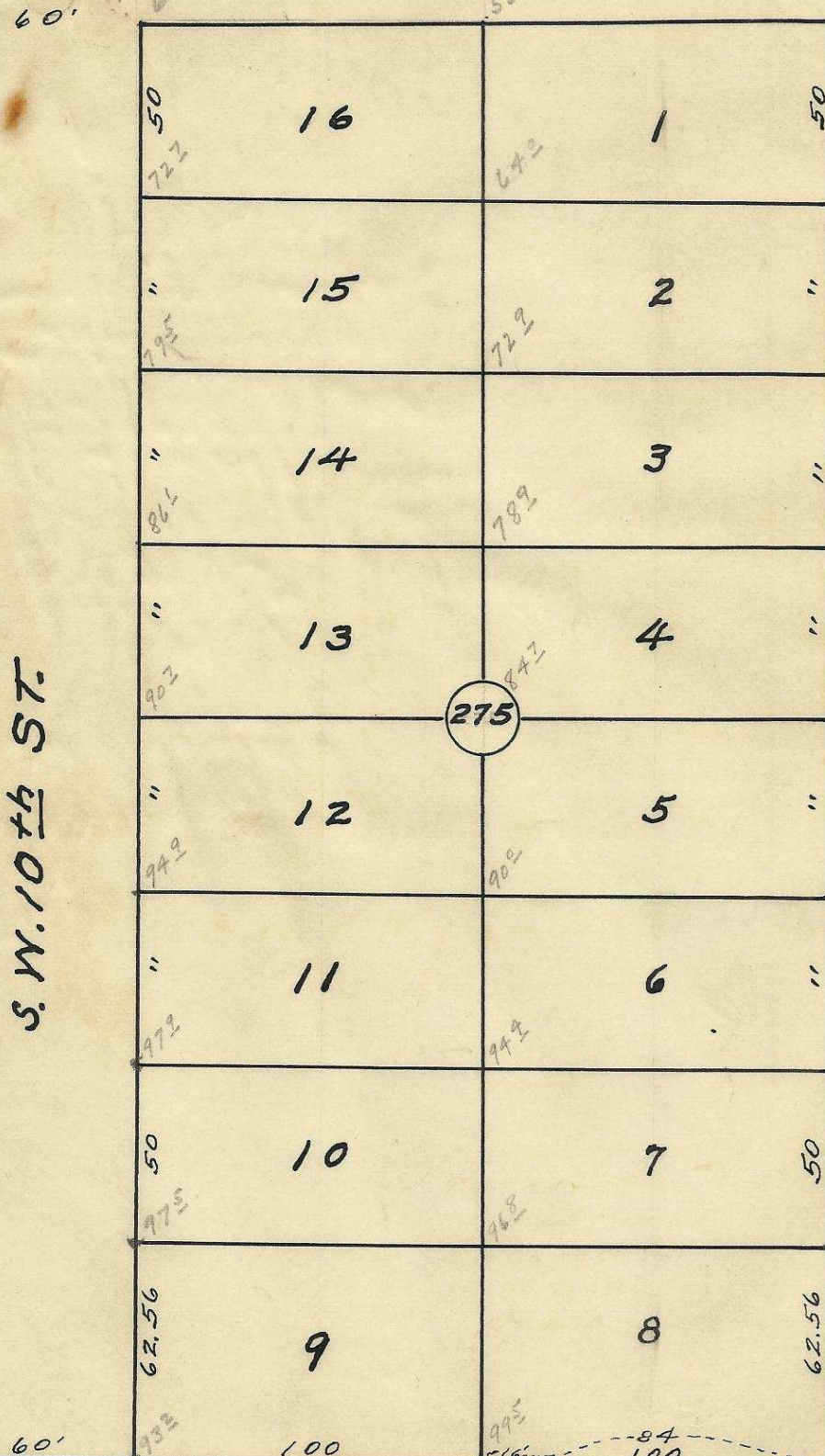


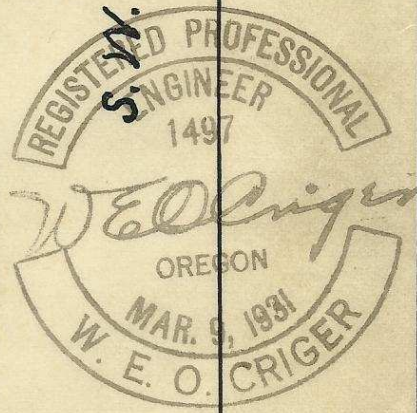
S.W. ISAAC AVE. 60'



Plat of  
Block 275 of  
Reservation Addition  
to the town, now City  
of Pendleton, Oregon.  
Scale: 1 inch = 50 Feet.  
Surveyed, staked & platted,  
August - 1948 - By W.E.D. Criger.

S.W. 10th St.

S.W. 9th St.



2N32 10DC

06-280-Ax

Howard S.