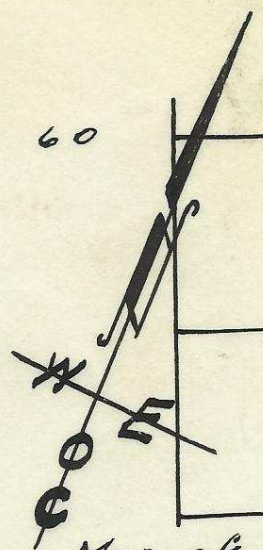
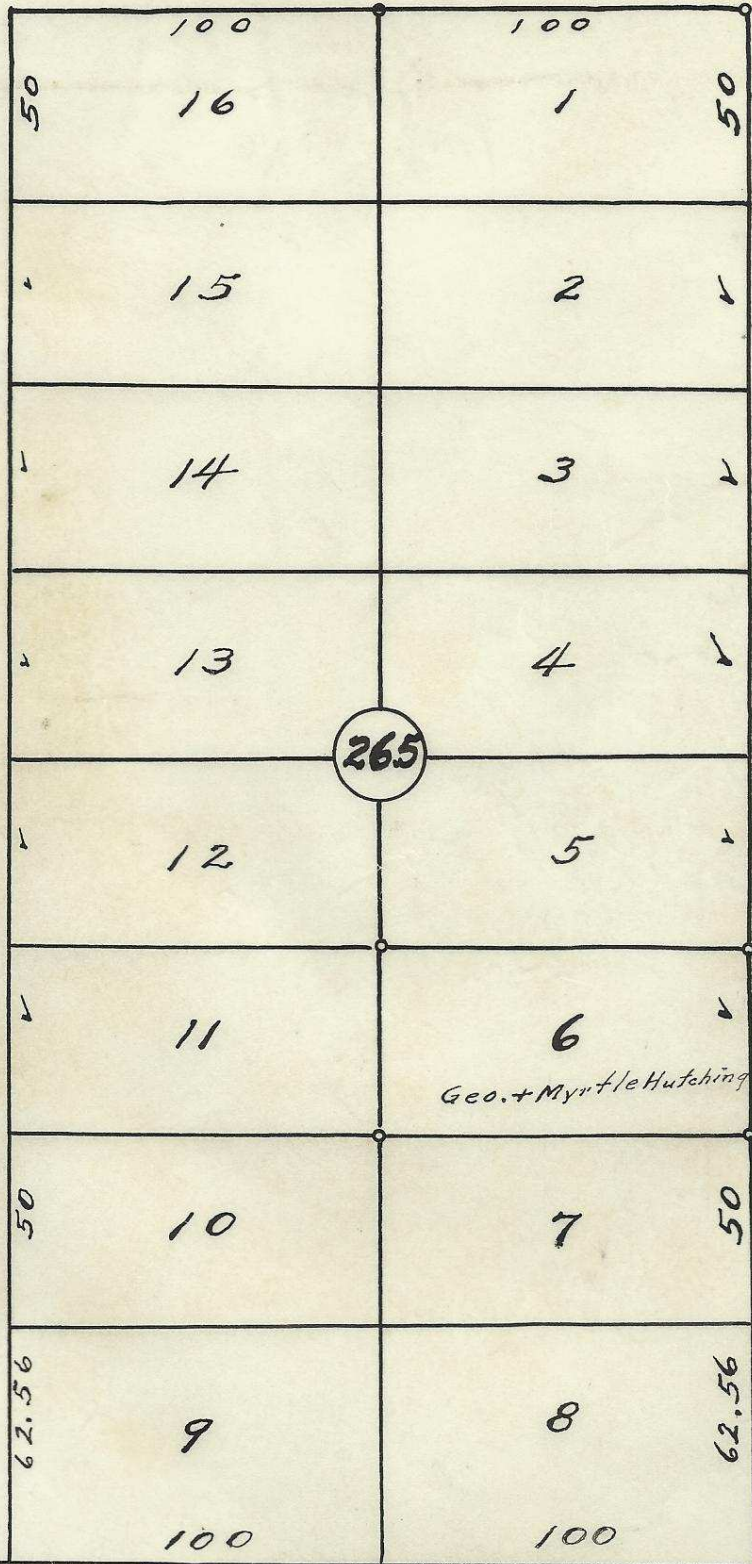


60

S.E. ISAAC AVE

80

60



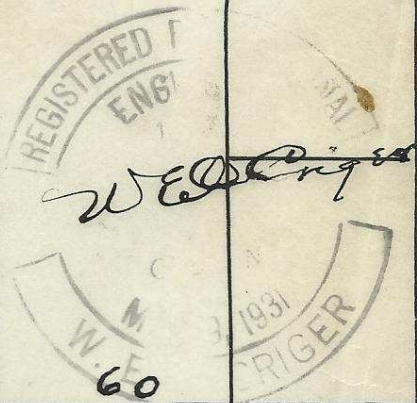
Map of
 Block 265 of
 Reservation Addition
 to the town, now City
 of Pendleton, Oregon,
 surveyed, staked and
 plotted, June-1956
 By W.E.O. Criger.
 Scale: 1" = 50'

South Main St.

S.E. 1st St.

265

Geo. + Myrtle Hutchings



Reservation Addition Boundary T2N 32 11 CB

06-286-Ax

4