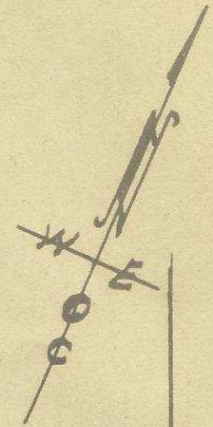
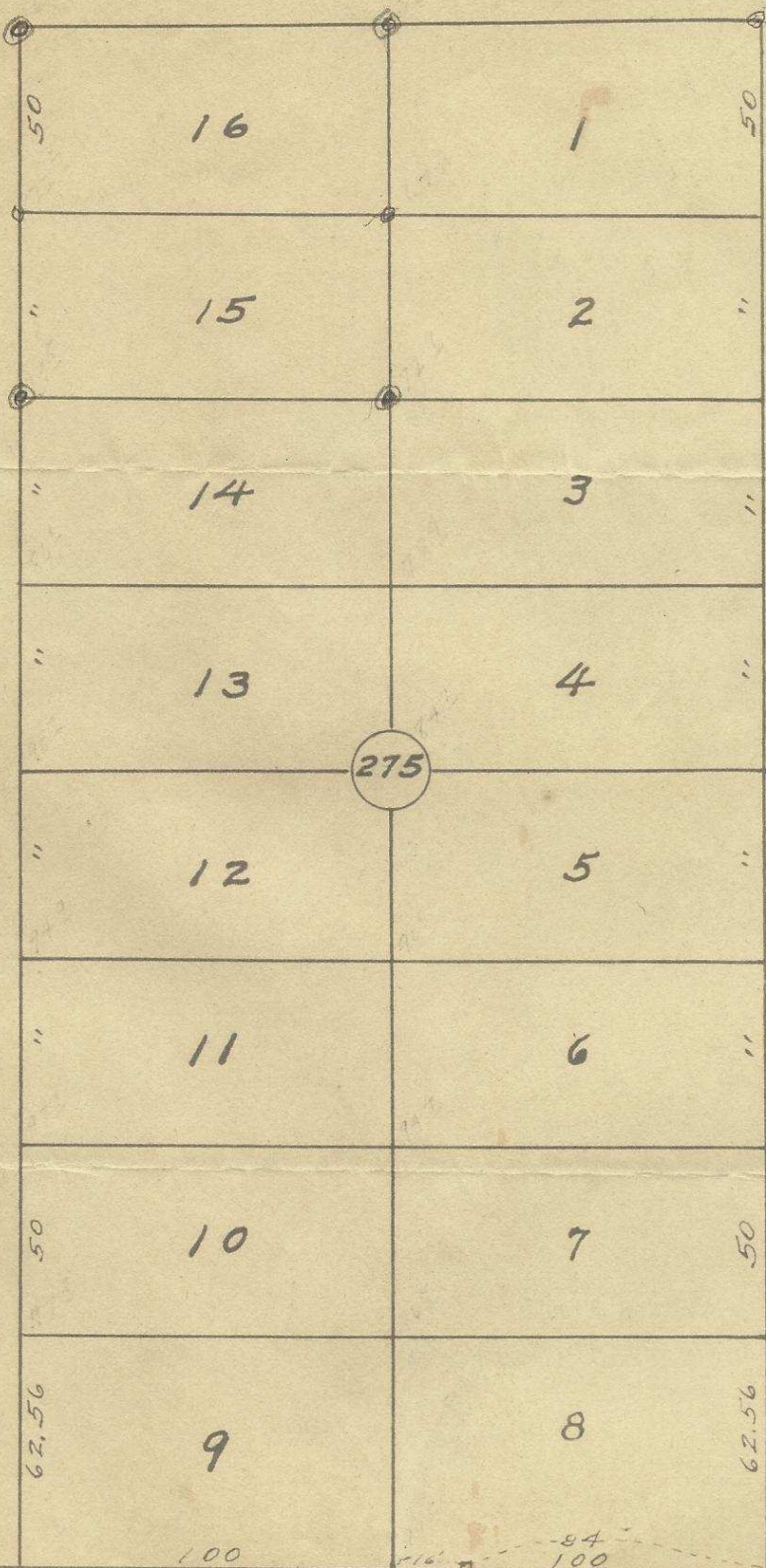


S.W. ISAAC AVE. 60'

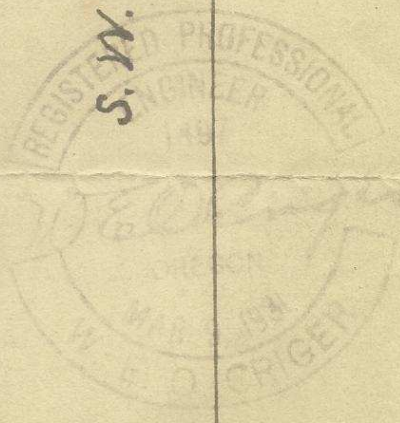
60'



Plat of  
Block 275 of  
Reservation Addition  
to the town, now City  
of Pendleton, Oregon.  
Scale = 1 inch = 50 Feet.  
Surveyed, staked & platted,  
August - 1948 - By W.E.D. Criget

S.W. 10<sup>th</sup> ST.

S.W. 9<sup>th</sup> ST.



60'

50

62.56

10

9

100

275

7

8

84

100

Reservation Boundary.

2N32 10DC

50

62.56

60'

06-294-A8