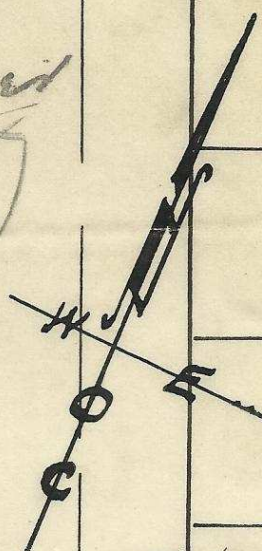
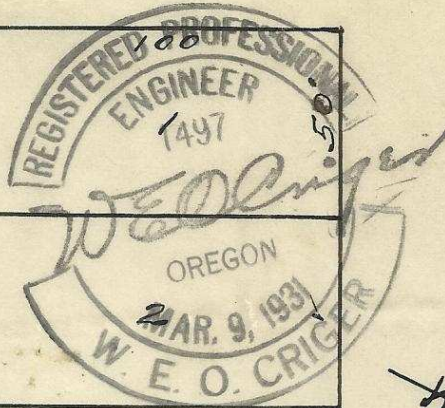
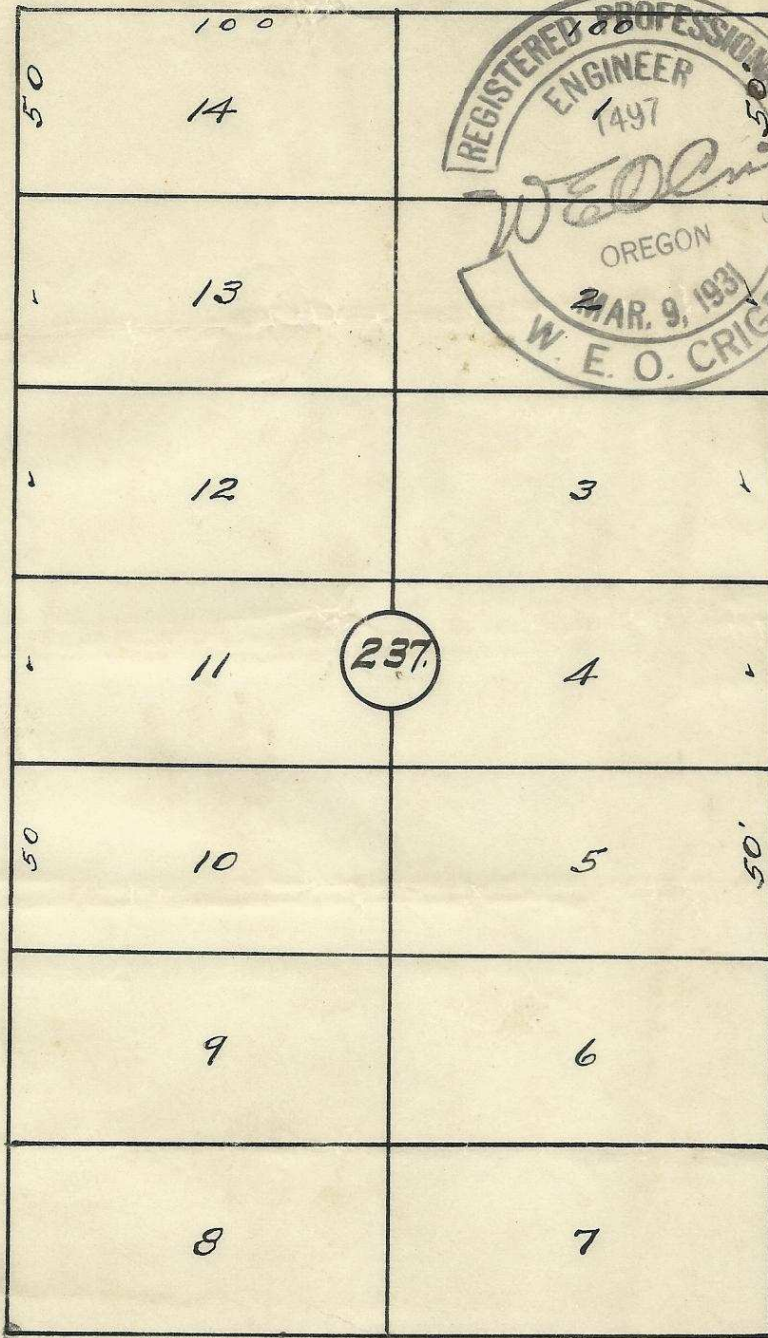


S.E. Hailey Ave.



Plat of
Block 237 of Res. Add.
to the town, now City
of Pendleton, Oregon.
Surveyed, staked, and platted
Jan. 1953 -
By W. E. O. Criger.
Scale: 1" = 50'

S.E. 12th St.

S.E. 13th St.

1270 Ft. to Monument. →
← S.E. Isaac Ave.

← 412.57 to Mon. 11

2N32 11AC

06-342-Ax