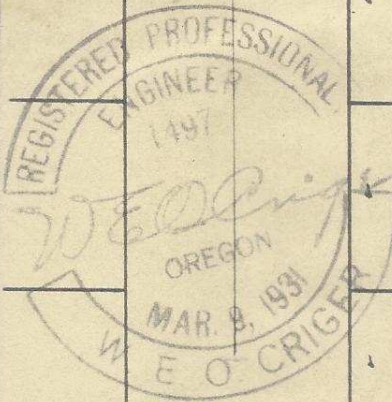
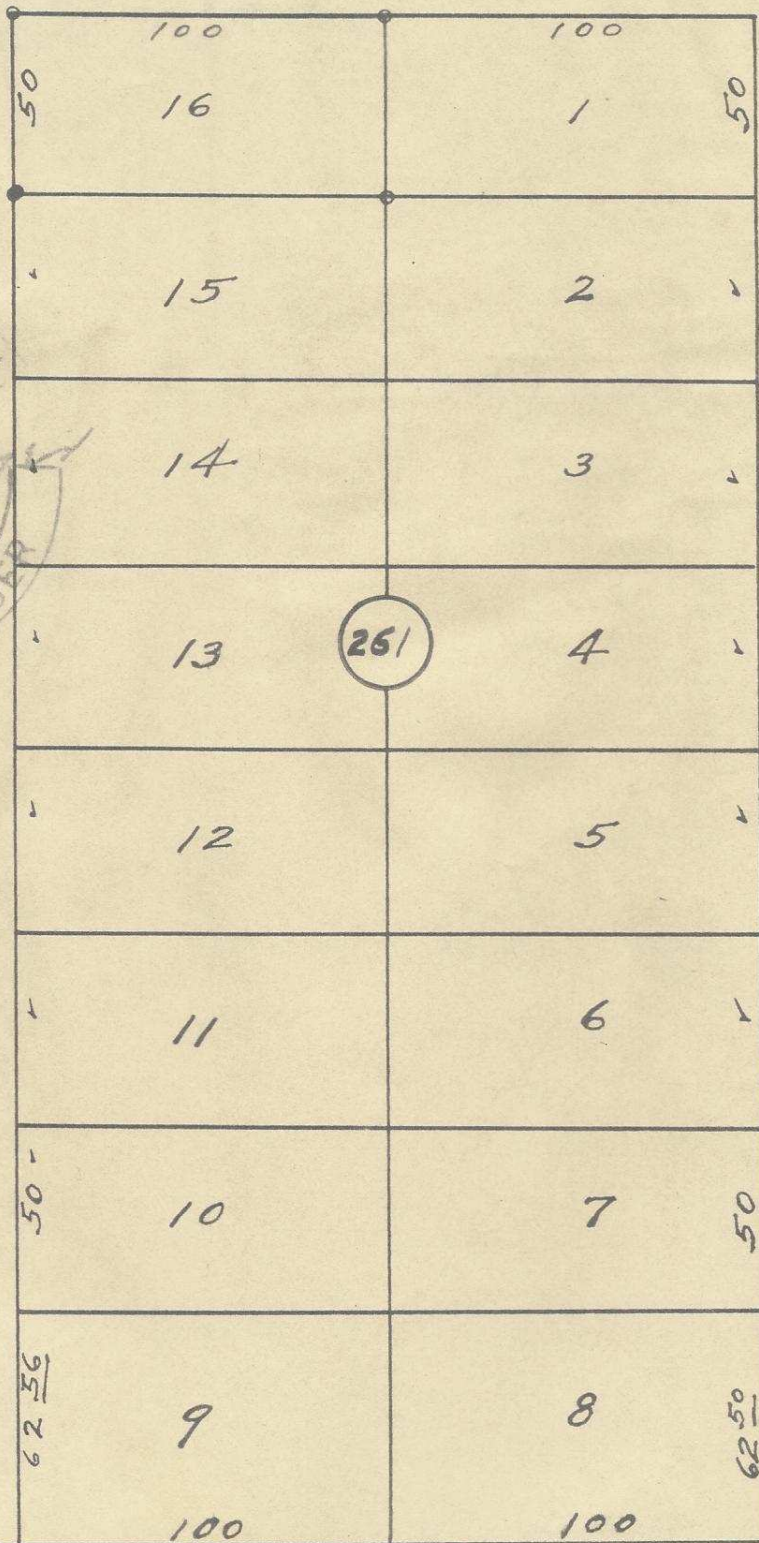


S. W. Isaac Ave.



S. E. 4<sup>th</sup> St.

S. E. 5<sup>th</sup> St.



Plat showing  
 Block 261 of Reservation  
 Addition to the town,  
 Now City of Pendleton,  
 Oregon -  
 surveyed, stated & platted  
 Aug. 1950 - by W. E. O. Criger  
 Scale: 1" = 50'

South Boundary Reservation Add.

203211CA

06-357-Ax

Chester Coleman - 513 - S. W. 21st. - 3357 - ph.