

60

60

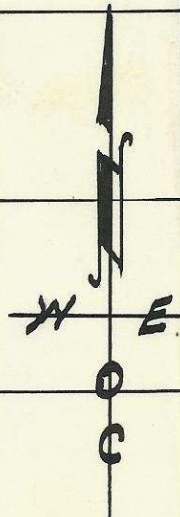
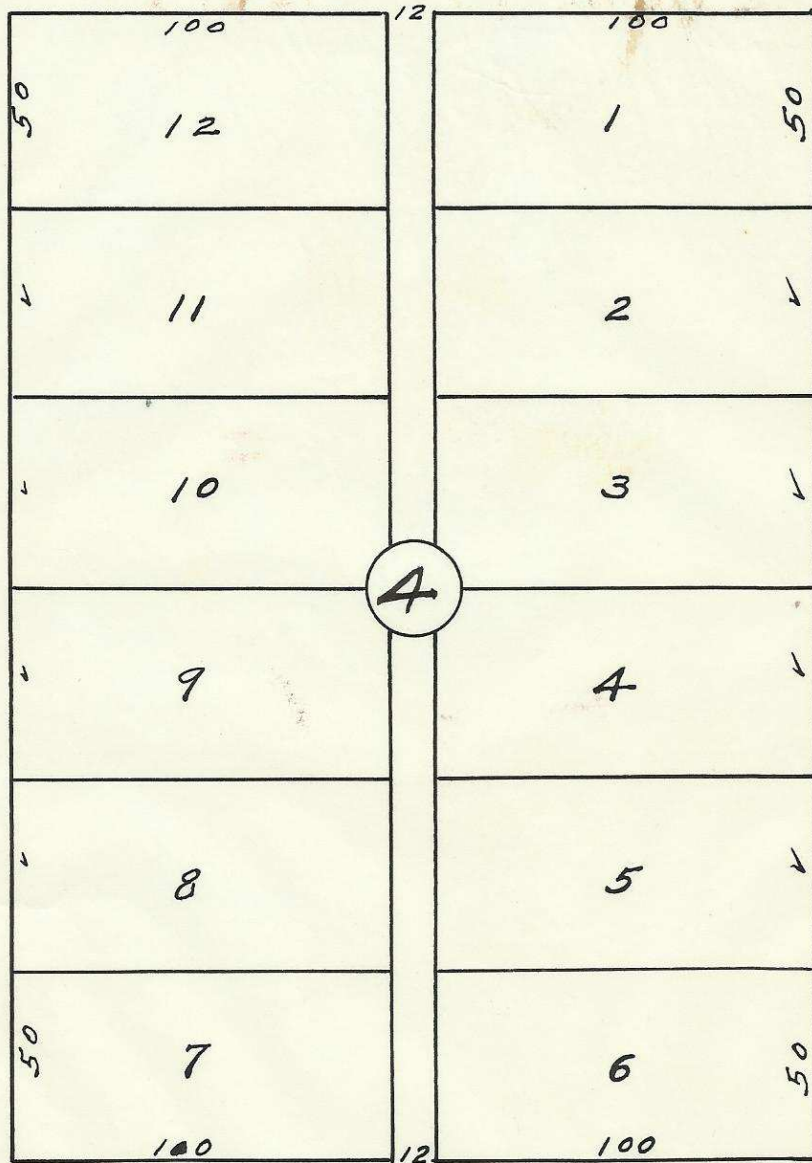
N.W. Gilliam Ave.

60

60

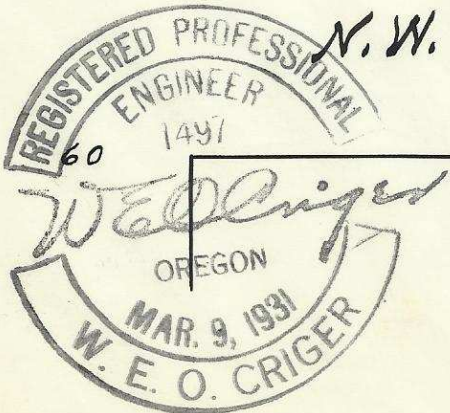
N.W. 12<sup>th</sup> St.

N.W. 11<sup>th</sup> St.



N.W. Furnish Ave.

60



Plat of  
 Block 4 of Cole's Addition  
 to the town, now city of  
 Pendleton, Oregon.  
 Surveyed, staked & platted,  
 Aug. 1952 - By - W. E. O. Criger.  
 Scale: 1" = 50'

OG-397-Ax 20323CD

4