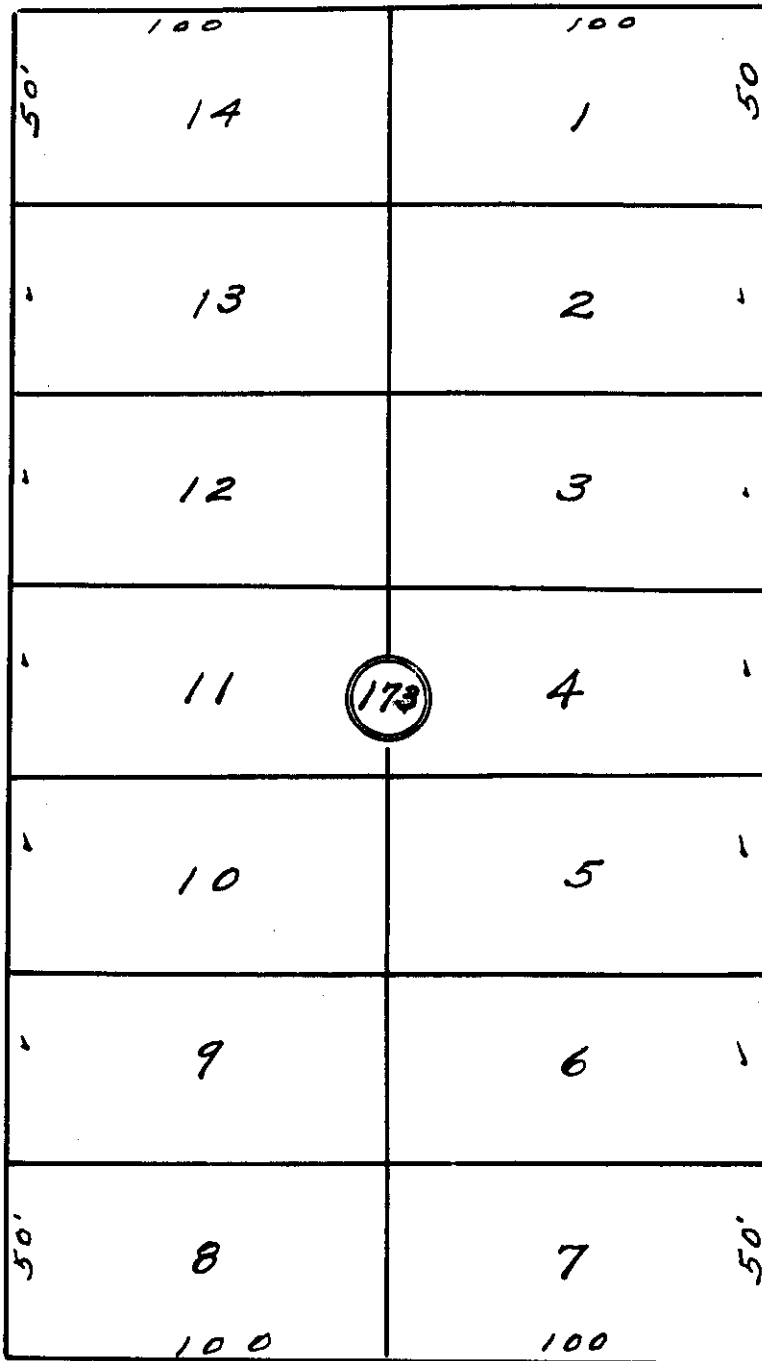


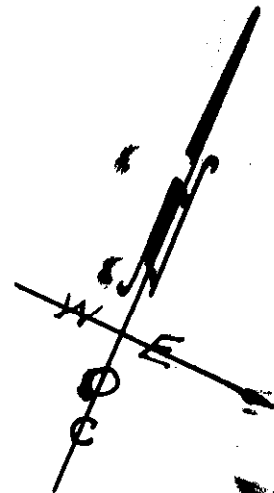
S.E. GOODWIN AVE.

60'



S.E. 7th ST.

S.E. 8th ST.



Plat of
 Block 173 of
 Reservation Addition
 to the town, now city
 of Pendleton, Oregon.
 Scale: 1 inch = 50 Feet.

S.E. HAILEY AVE.

60'

60'

60'

60'

Received by Umatilla County Surveyor
 2/5/2013
 J. Allen
 13-018-AX