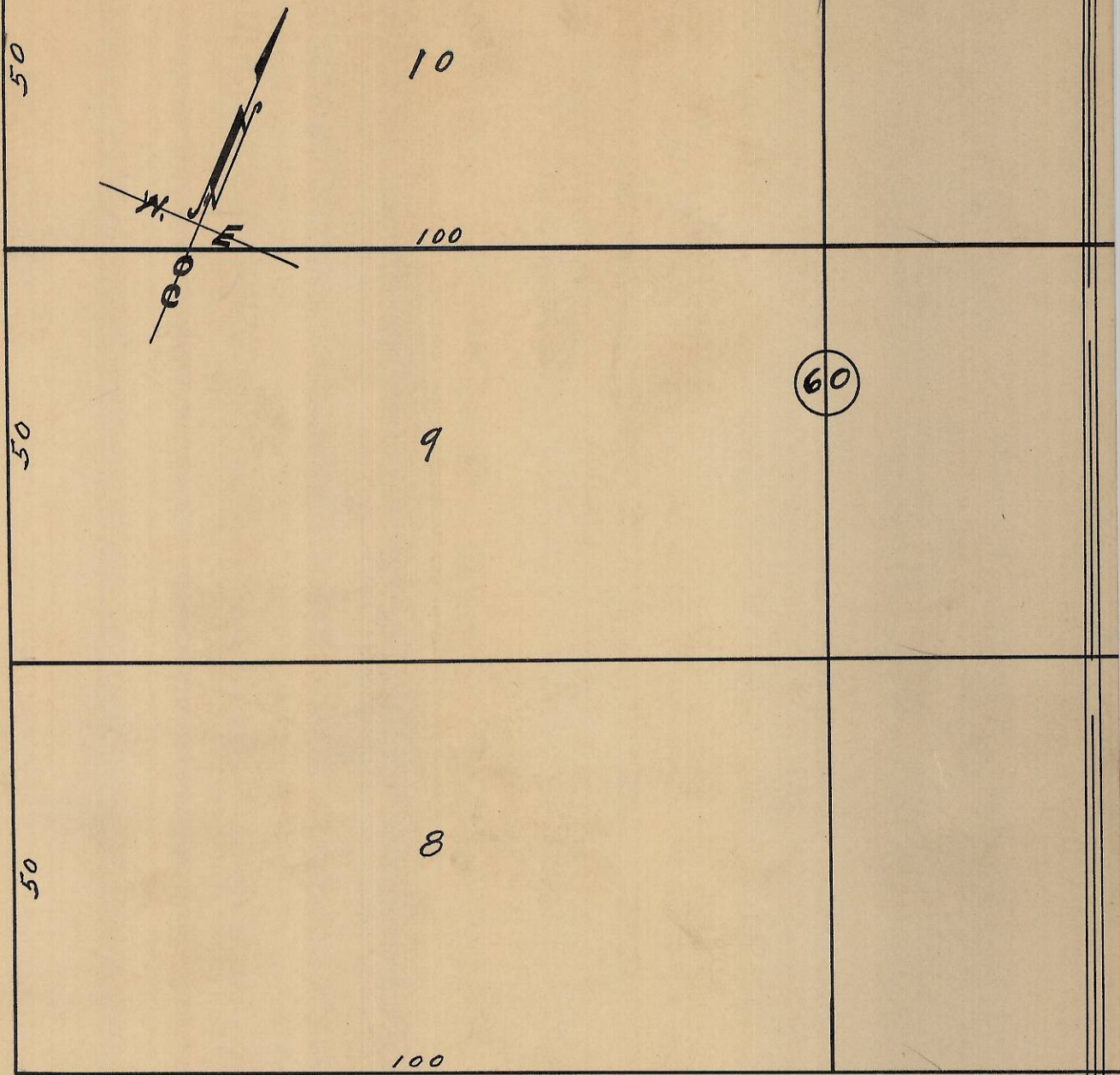
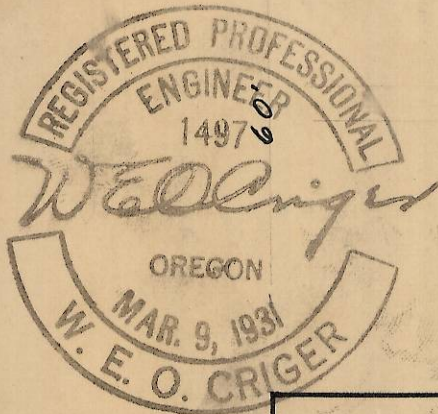


60 S. E. 6<sup>th</sup> ST.



Rec'd 2/21/13  
J. J. Jahn  
13-080-Ax



### S. E. EMIGRANT AVE.

Plat showing lot 8 of Block 60 of Reservation Addition to the town, now City of Pendleton, Ore.  
Scale: 1 inch = 20 Feet.

Surveyed, Staked, & Platted, July - 1948.  
By W. E. O. Criger.

2N 3211 BA