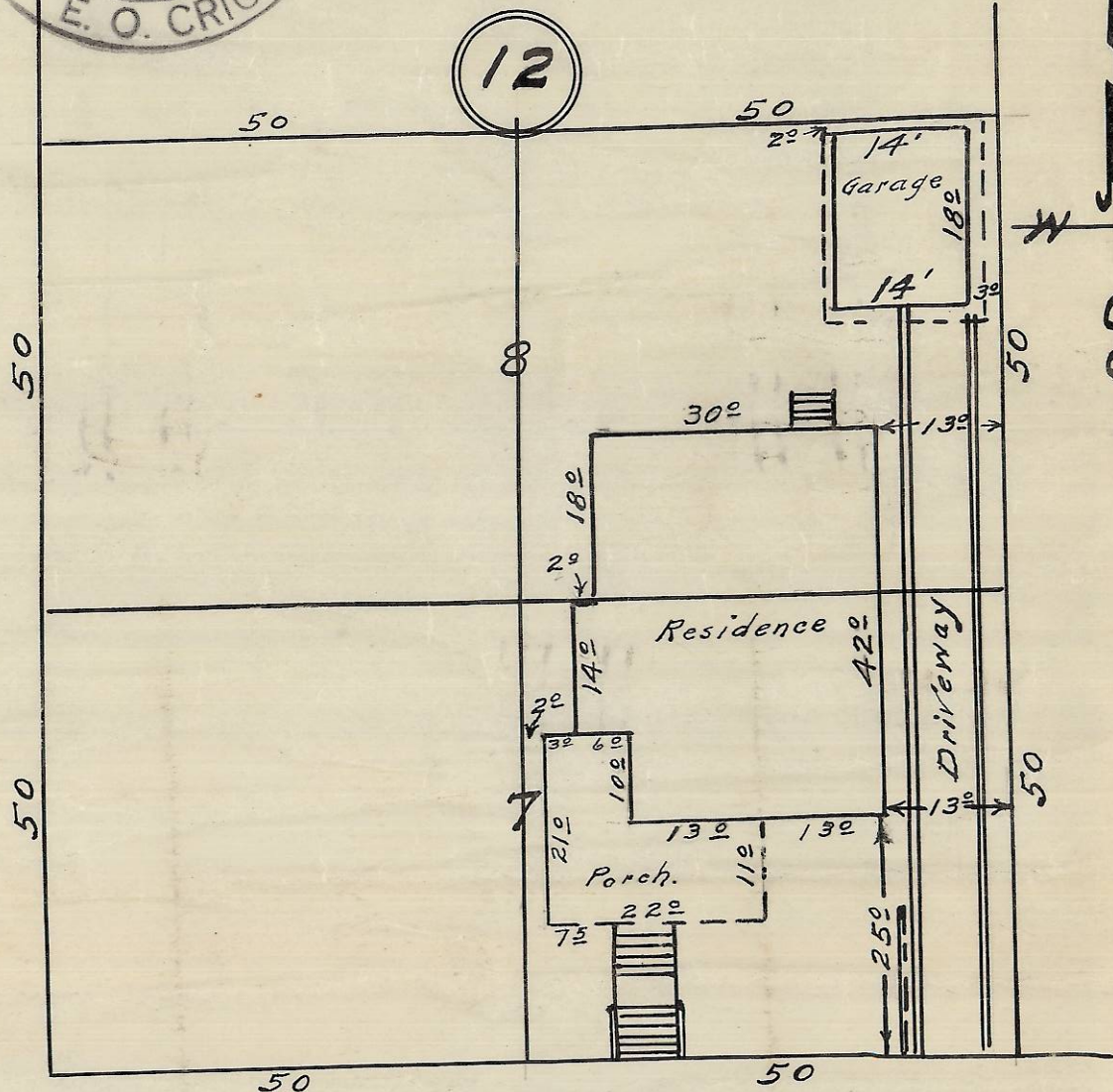




Plot showing
 E/2 of Lots 7 and 8 of
 Block 12 of Livermores Addition
 To the City of Pendleton, Oregon.
 Surveyed, staked & platted, April-1954
 By W.E.O Criger -
 Scale: 1 inch = 20 Ft.

N.W. 6th St. - 60' wide - paved.



N.W. Furnish Ave. 60' wide - Paved.

RECEIVED BY

Umatilla County Surveyor

Date: 2/21/13

Rec'd By: *D. Roberts*

No.: 13-097-AX

2W 32 03 DC

Wes. B. Korman - Raley Blk. - Ph 4132 -