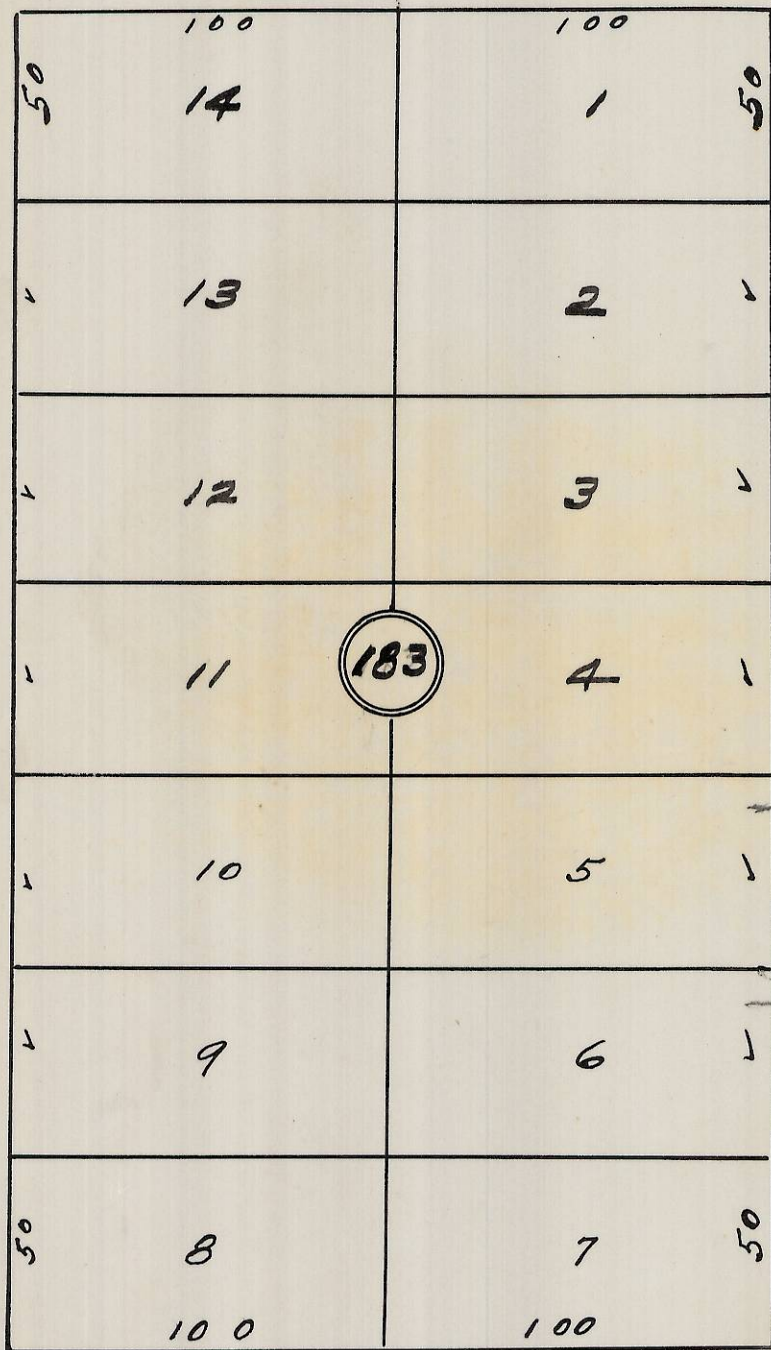
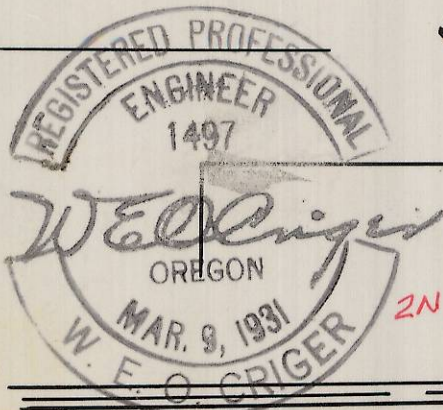


S. W Goodwin Ave.



S. W. Hailey Ave.

Plat showing
 Block 183 of
 Reservation Addition
 to City of Pendleton,
 Oregon -
 surveyed, staked & platted
 July - 1954 -
 By W. E. O. Criger -
 Scale: 1" = 50'



Rec'd 2/21/13
 D. Johnson
 13-117-Ax

2N 32 10 DA

A. Pecavet.