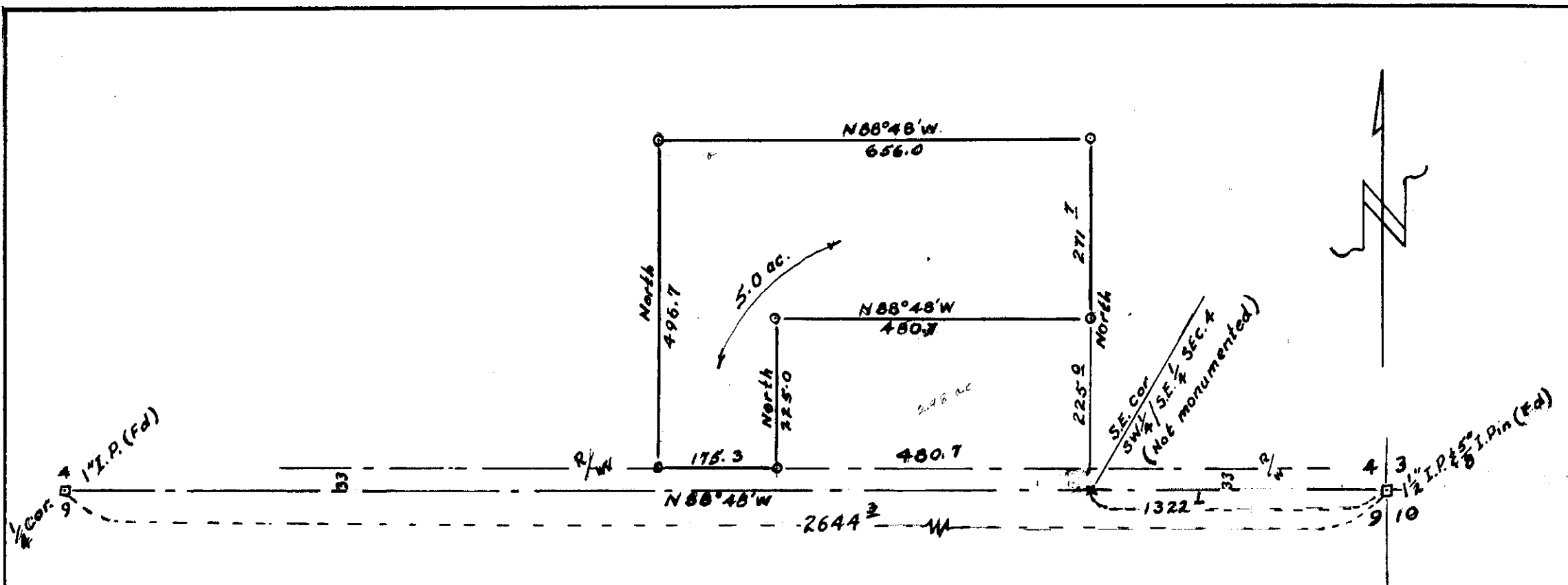


H-231-Ax



LEGEND

- POINTS FOUND AS NOTED \square
- POINTS SET $\frac{1}{2}$ " x 24" IRON PINS \circ
- POINTS ON LINE OCCUPIED \times

Bearings based on Verl Fraley's survey of section 9, on file in County Surveyor's Office



PLAT OF SURVEY OF 5.0 ACRES
IN SE $\frac{1}{4}$ OF SW $\frac{1}{4}$ SEC. 4, T4N, R28E, W.M.
UMATILLA COUNTY OREGON
FOR ELWYN HALL
SCALE 1" = 200' 5/26/73

9 \square 10
 $\frac{1}{4}$ Cor. $\frac{5}{8}$ " I. Pin (Fd)