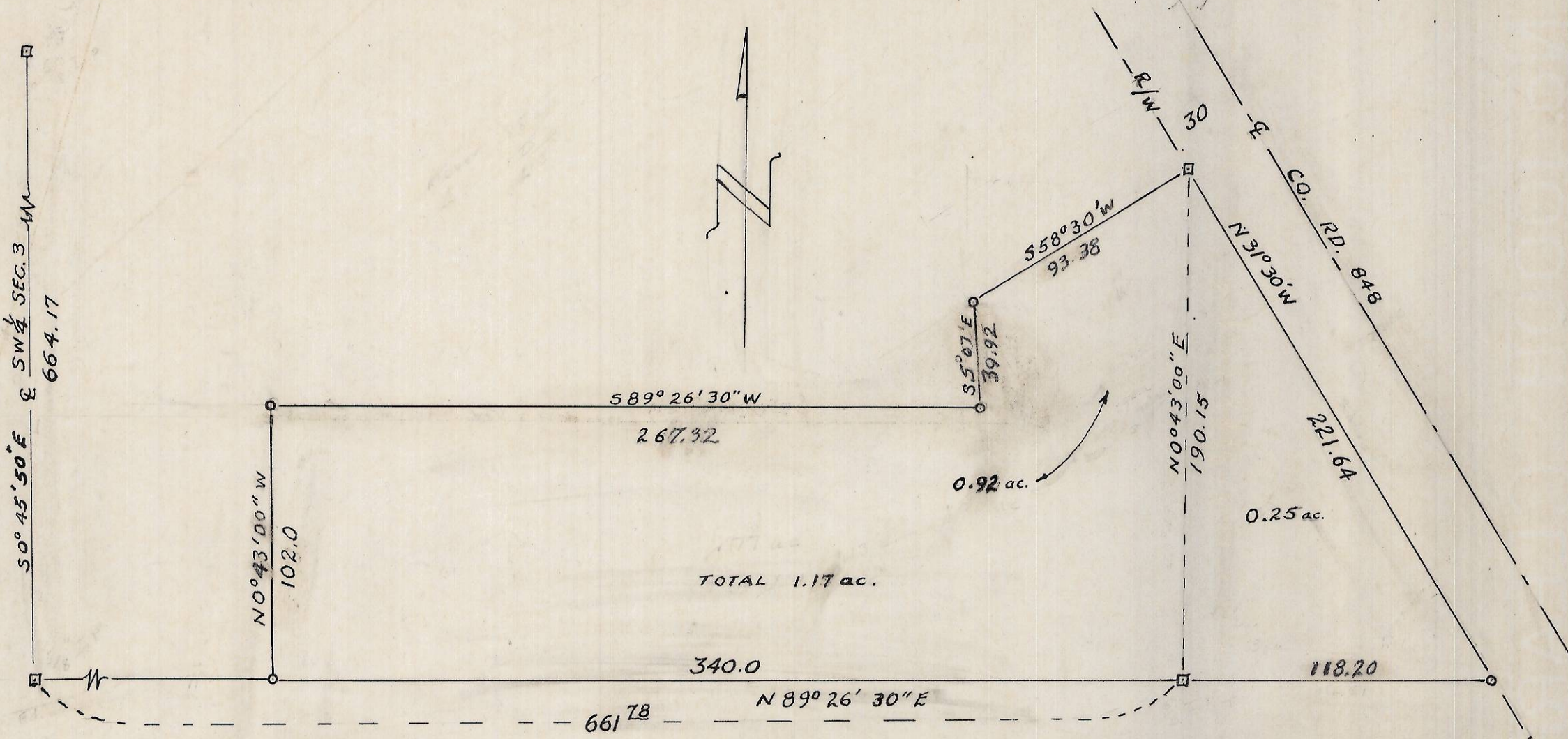


I-86-Ax



TOTAL 1.17 ac.



LEGEND →
 POINTS FOUND □ 5/8" REBARS
 POINTS SET ○ 1/2" x 24" REBARS
 BEARINGS ADOPTED FROM
 SURVEY IN THIS 1/4 SECTION BY
 HARRIS & ASSOCIATES

SURVEY PLAT OF 1.17 ACRES
 IN SW 1/4 SEC. 3, T4N, R28E, W.M.
 UMATILLA COUNTY OREGON
 FOR STARRET DECOR.
 SCALE 1" = 50' 6/16/73

I-86