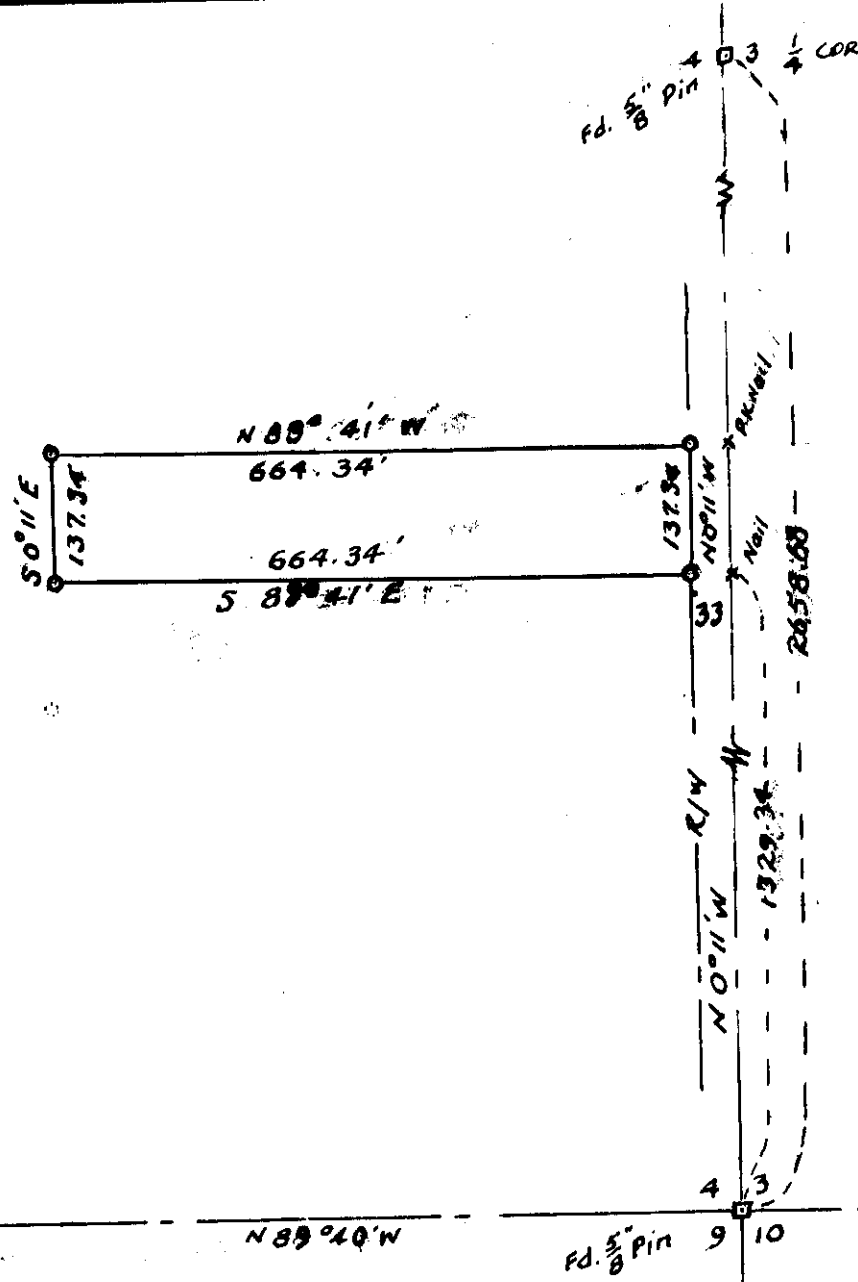
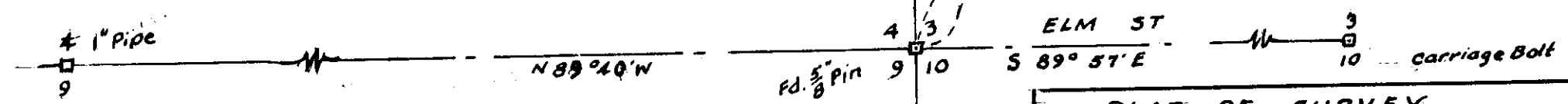
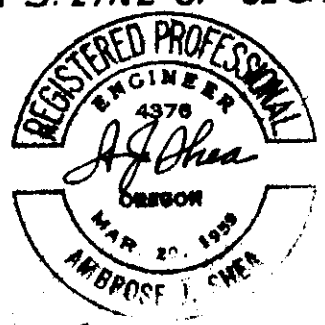


J-138-A



LEGEND:  
 □ POINTS FOUND AS DESCRIBED  
 ○ POINTS SET 1/2" x 24' REBARS  
 × POINTS SET ON SEC. LINE AS TURNING POINTS  
 BEARINGS BASED ON S. LINE OF SEC. 4 BEING N 89° 40' W



PLAT OF SURVEY  
 IN N.E. 1/4 OF S.E. 1/4 SEC. 4, T4N, R28E, W.M.  
 FOR JOHN DAY / RHEIMY FISHER  
 SCALE 1" = 200' 3/26/75

J-138