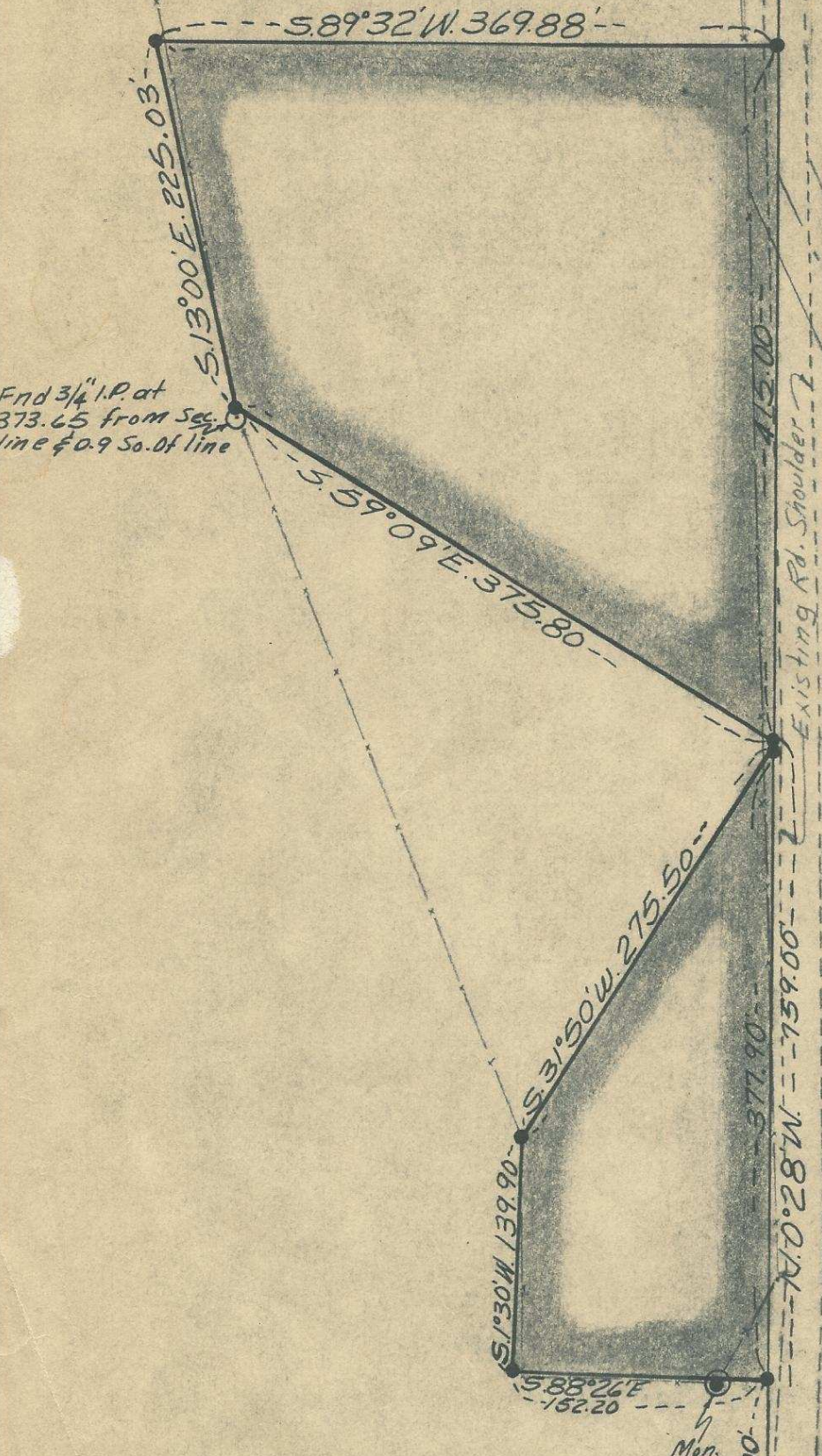


928

Mon. 11 12

End. Stone 6" x 8" x 14" Standing on end near center of Road and 1 ft. below Surface



End 3/4" I.P. at 373.65 from Sec. line & 0.9 So. of line

End. Stone 8" x 12" x 18" Standing on end 6 ft. below surface of Road. Raised Stone and reset 1 ft. below Road Surface.

End. 1/4 Cor. Stone With 1/4" on W. Face

- "•" Indicates I.P.'s Set
- "○" Indicates I.P.'s Found
- "⊙" " Brass Cap Mon.'s End.

Existing Fence

REGISTERED
OREGON
LAND SURVEYOR

Ralph P. Thompson

MAY 13, 1960
RALPH P. THOMPSON
506

Q-57-Ax

Property Survey For
FORD ROBERTSON
1/4 NE 1/4 Sec. 14, T. 1 N. R. 32 E. W. 1/4

Date: 3-6-63 Scale: 1"=100'

Ralph P. Thompson
Land Surveying
Pendleton, Ore.

4/23/63