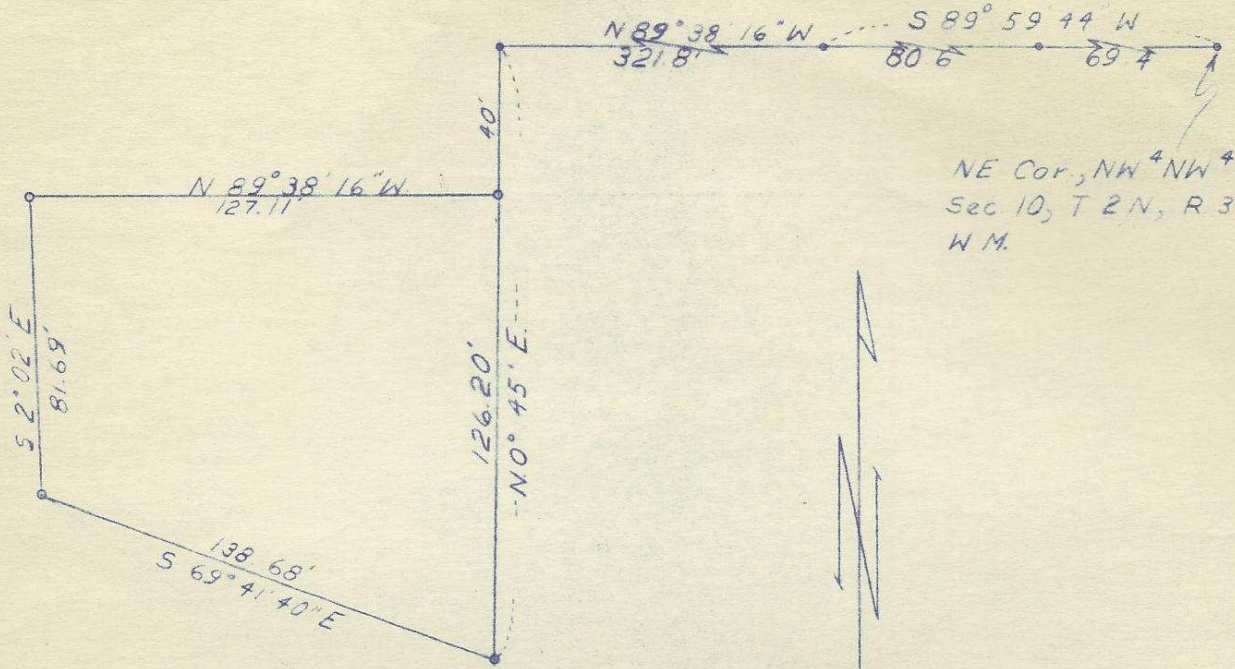
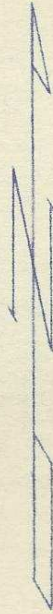


orig

Q-308-Ax



NE Cor., NW<sup>4</sup>NW<sup>4</sup>  
Sec 10, T 2 N., R 32 E.,  
W.M.



REGISTERED  
OREGON  
LAND SURVEYOR

*Wayne O Harris*

MAY 6, 1955  
WAYNE O. HARRIS  
346

HAYES AND HARRIS

Survey For

PENDLETON COUNTRY CLUB

Parcel in NW<sup>1</sup>NW<sup>1</sup> Sec. 10  
T. 2 N., R. 32 E., W.M.

SCALE	DATE	DRN. BY	DRNG. NO.
1"=50'	7/8/57	W.O.H.	49

Q-308-Ax