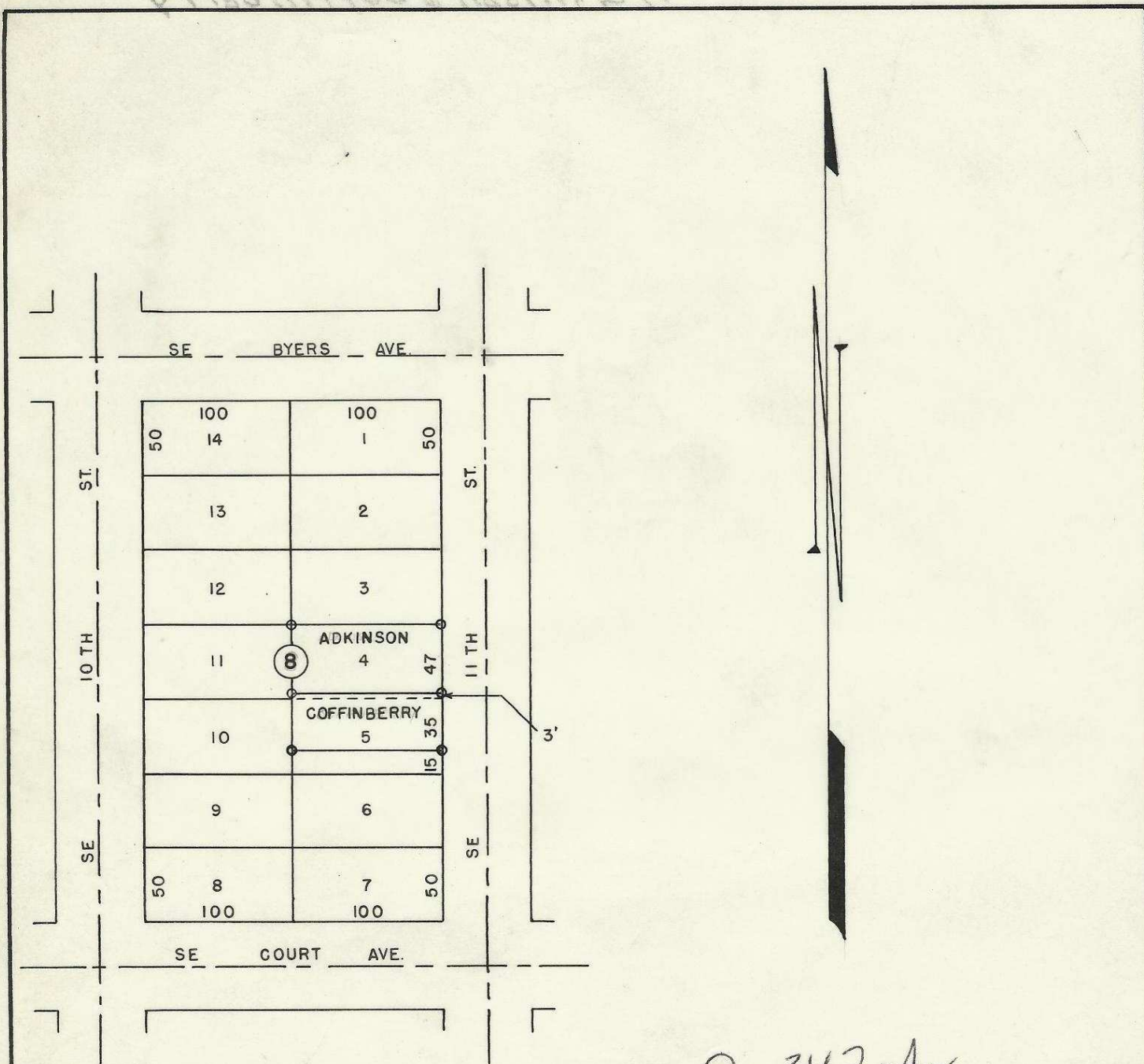


Adkinson & Coffinberry



Q-342-Ax



HAYES & HARRIS ENGINEERING		
SURVEY FOR R. ADKINSON & V. COFFINBERRY		
LOTS 4 & 5, BLK. 8, RESERVATION ADD'N. PENDLETON, OREGON		
SCALE 1" = 100'	DATE 3-1-55	DRAWN BY W.O.H.

T2N R32 S20.02 DC