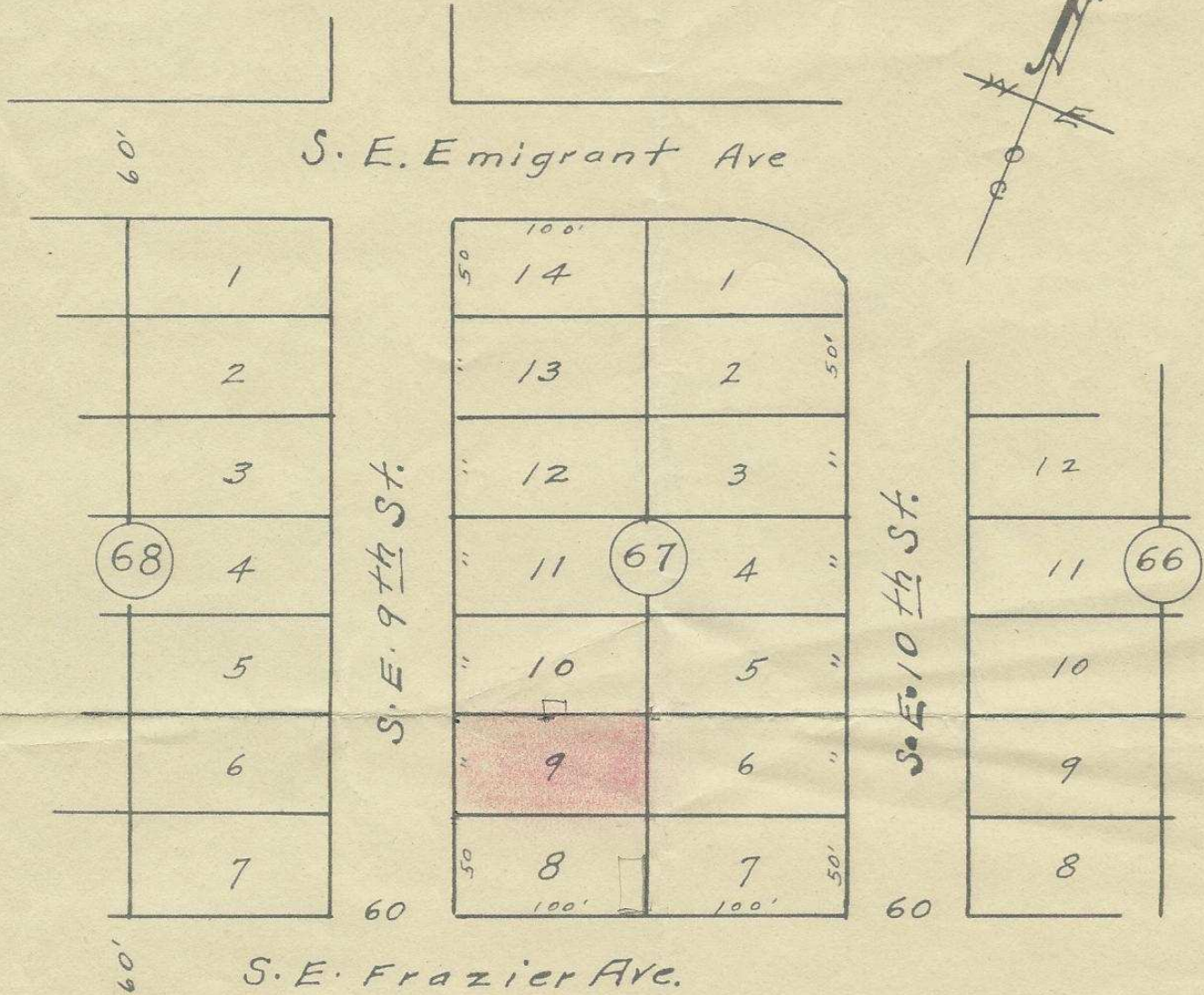
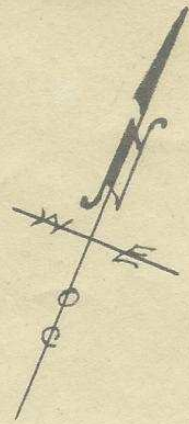
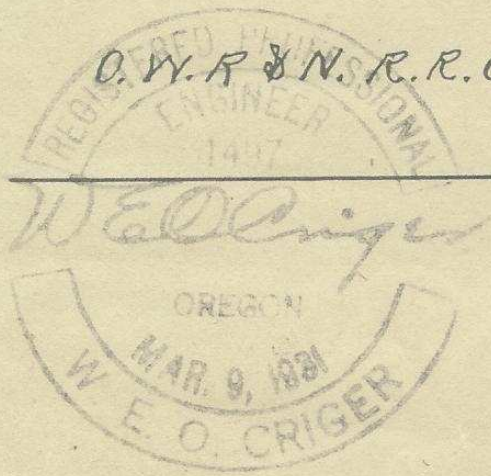


OR 17 Q-345-Ax



O. W. R. & N. R. R. Co's R/W.



NW<sup>1/4</sup>NE<sup>1/4</sup>Ⓣ

Plat of Block 67 of  
 Reserration Addition to  
 the City of Pendleton, Oregon.  
 Scale: 1 inch = 100 Feet.  
 surveyed, staked and platted  
 April 1, 1948 - By W. E. O. Criger. No 9

-Dicus-

Q-345-Ax

3