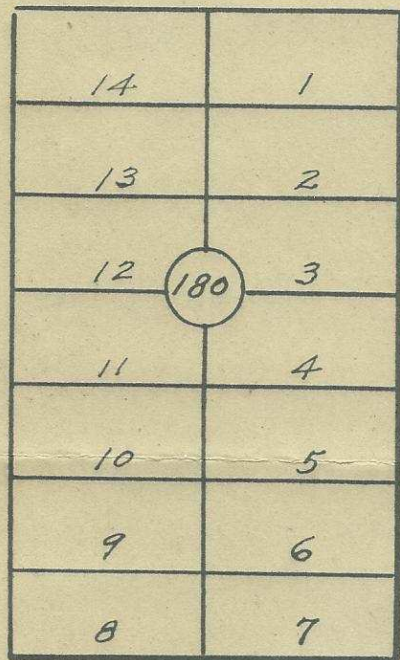


Q-366-AX

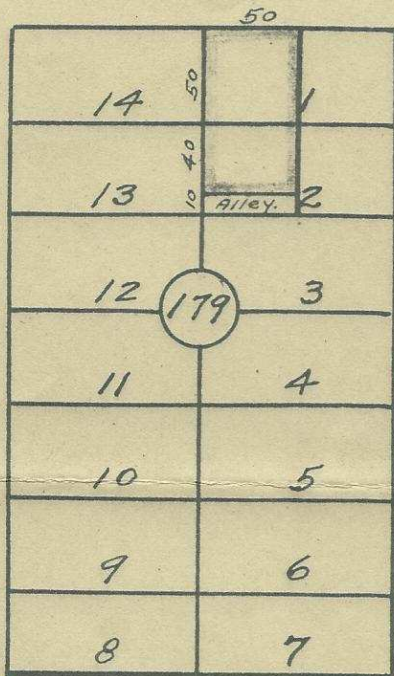
O.W.R. & N. YARDS.

S. E. GOODWIN AVE.

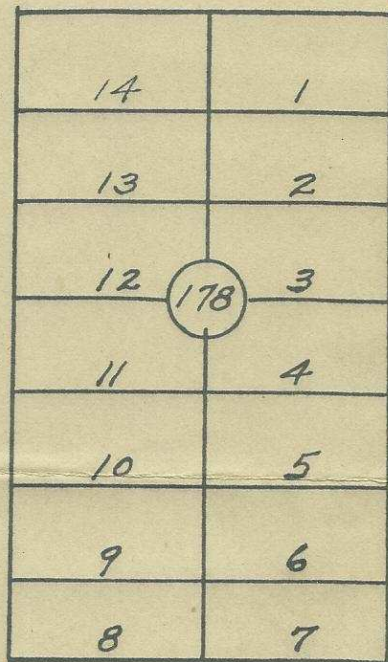
STREET.



S. E. FIRST ST.



S. E. SECOND ST.



S. E. HALEY AVE.

MAIN

Plat Showing  
 Blocks 178, 179, and 180 of Reservation Addition  
 to the City of Pendleton, Oregon.  
 Scale - 1" = 100'



Surveyed and Platted July - - 1947.

By W. E. O. Criger - C. E.

For Wm G. Warren - owner - W 1/2 Lots 1+2 - Blk. 179.

Q-366-AX SW 1/4 NW 11

ORIG

487