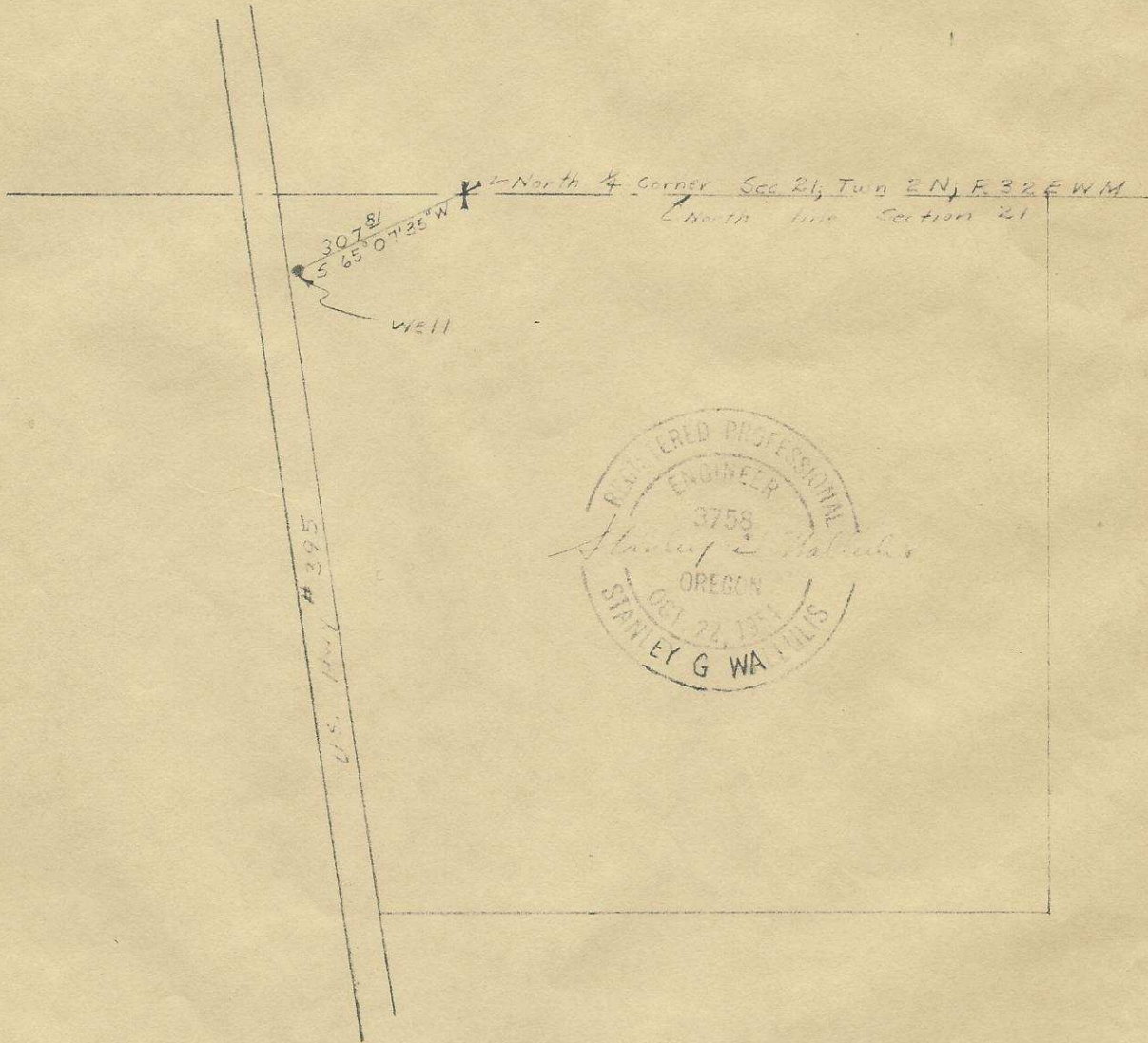


ENGINEERS CERTIFICATE

I Stanley G. Wallulis of Pendleton, Oregon do hereby certify that this map was made from notes taken during an actual survey made by me on April 8, 1957; that the monument shown on this map consisting of a 2" Pipe located over the center of the well & more than 3 ft in length is S 65° 07' 35" W a distance of 307.81 feet from the North quarter Corner of Sec 21, Twp 2 N, R 32 E W.M.



Well Survey for Mary Lyons

SCALE: 1" = 300'	DATE: April 11, 1957
<b>WALL AND TENNESON</b> Engineers	
The Dalles Pendleton	Oregon

② - 439-Ax  
OKIT  
218A