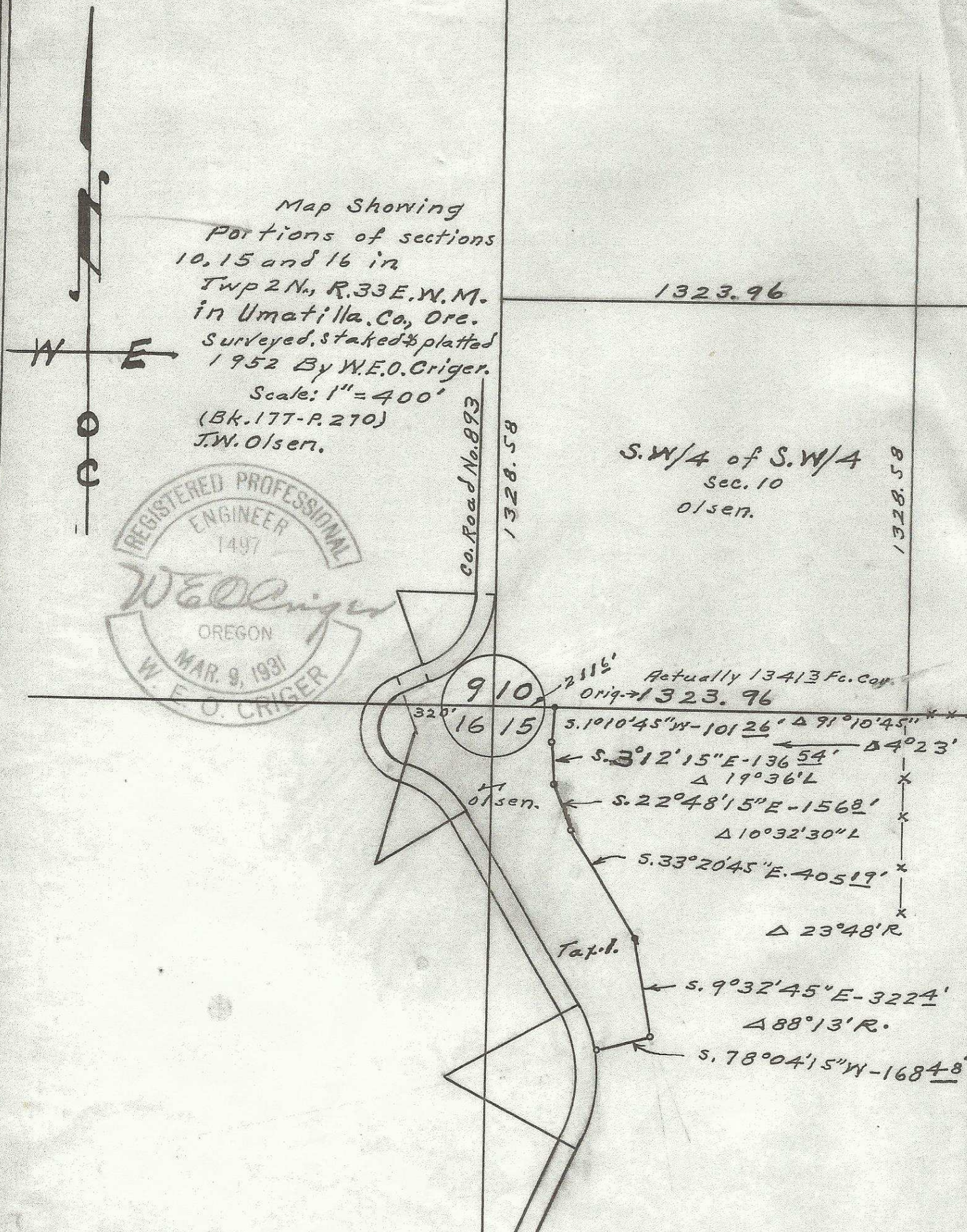
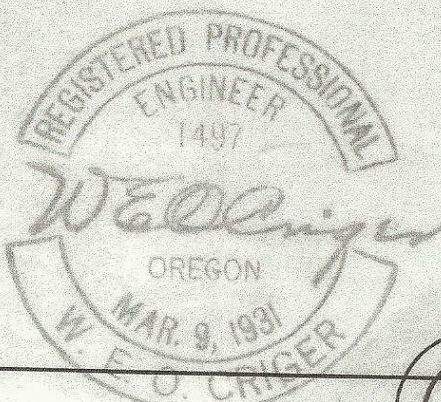


Map Showing  
 Portions of sections  
 10, 15 and 16 in  
 Twp 2 N., R. 33 E., W. M.  
 in Umatilla Co., Ore.  
 Surveyed, staked & platted  
 1952 By W.E.O. Criger.  
 Scale: 1" = 400'  
 (Bk. 177-P. 270)  
 J.W. Olsen.



Q-476-Ax