

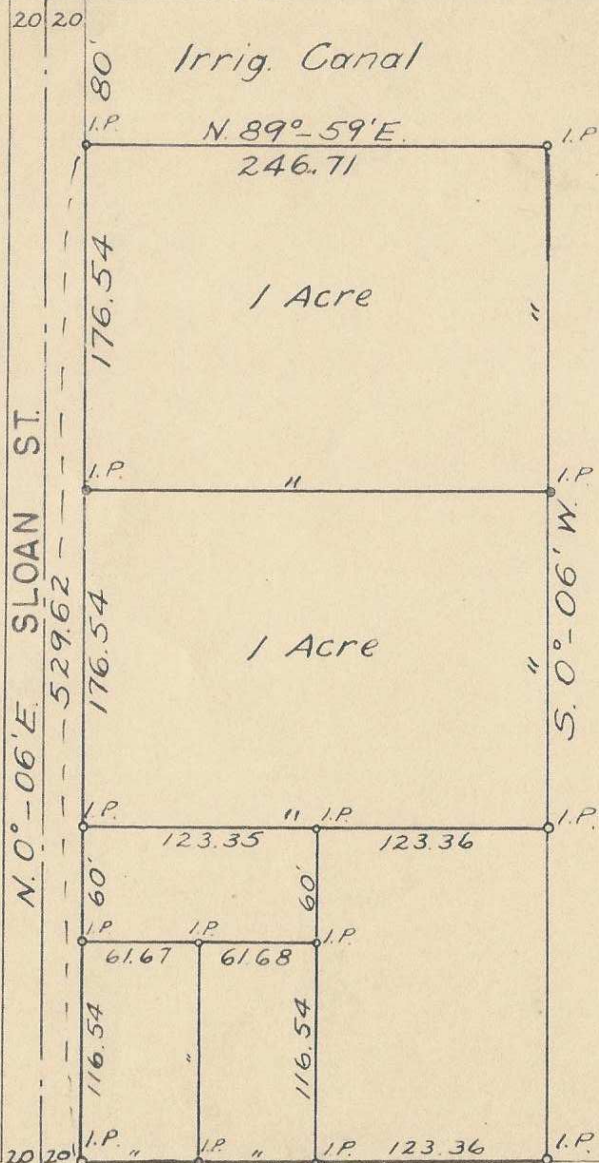
Q-694-Ax

N.W. Cor. of S.W. 1/4
of N.E. 1/4 of S.E. 1/4 Sec. 32

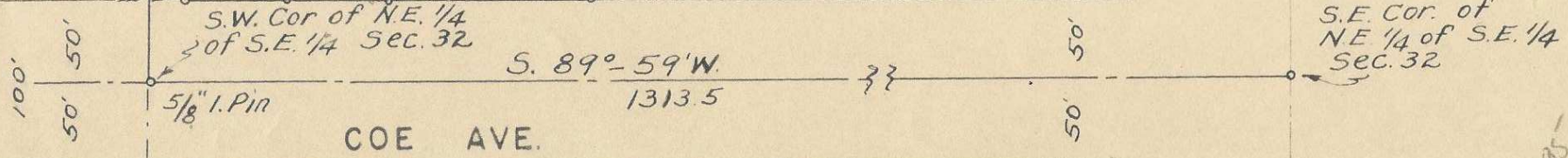
TRACTS OF LAND
IN

STANFIELD, UMATILLA CO., OREGON
IN THE S.W. 1/4 OF N.E. 1/4 OF S.E. 1/4
SEC. 32, T.4 N., R.29 E., W.M.

SCALE: 1" = 100'



Verl R. Fraley
No. 183



100'
50'

5/8" I. Pin

COE AVE.

1313.5

50'
50'

S.E. Cor. of
NE 1/4 of S.E. 1/4
Sec. 32