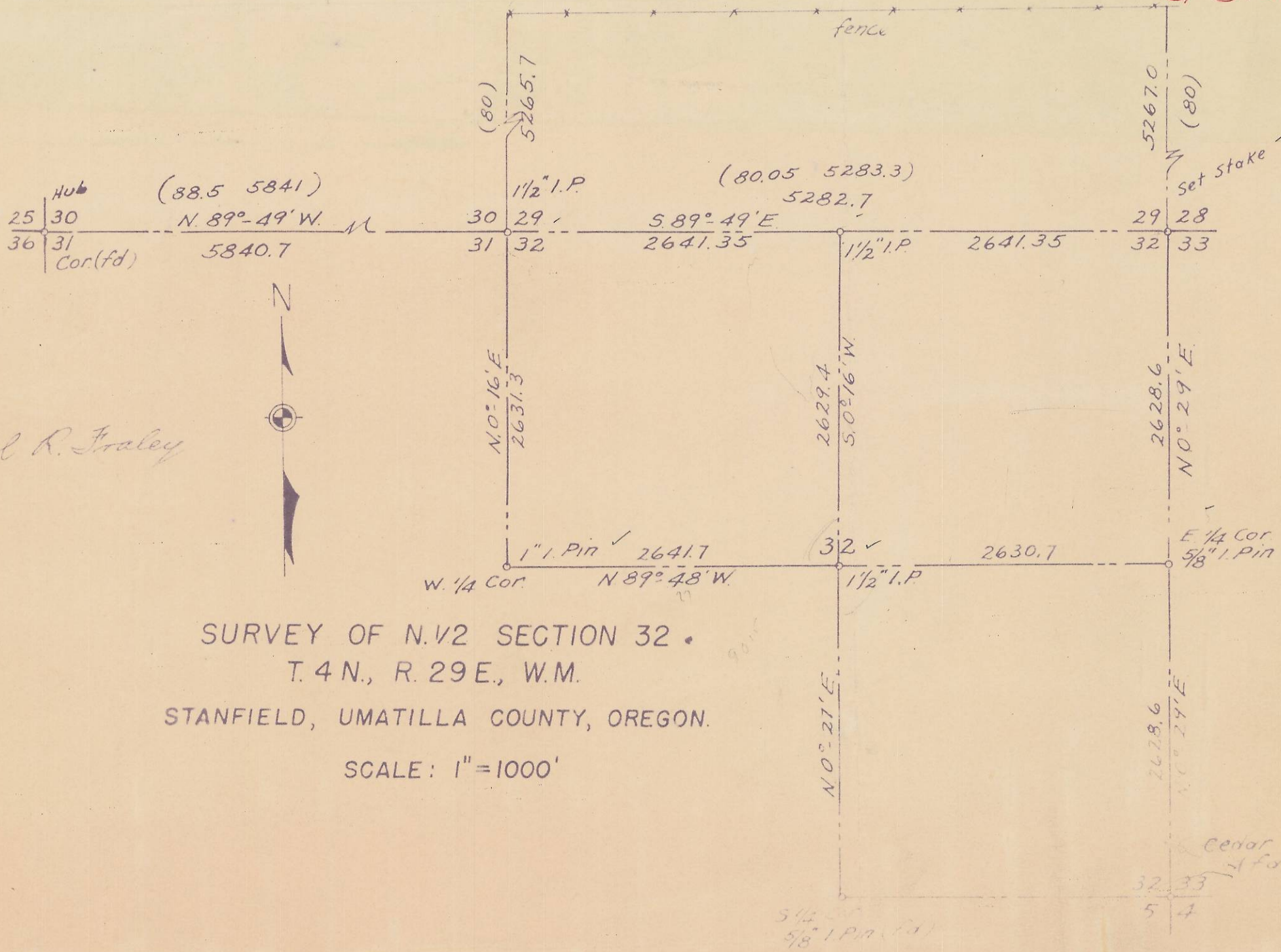


695-Ax



Carl R. Fraley



SURVEY OF N. 1/2 SECTION 32 •
 T. 4 N., R. 29 E., W.M.
 STANFIELD, UMATILLA COUNTY, OREGON.
 SCALE: 1" = 1000'

5/8" I.P. (fd)

FIELD NOTES

For North $\frac{1}{2}$ Section 32, T.4 N., R. 29 E.W.M. June 1, 1950
 Stanfield, Umatilla Co, Ore

Surveyed by V.R. Fraley
 Ore Land Surveyor No.183

On South Line S.E. $\frac{1}{4}$ Sec. 32

Found a 2" I.P. at the S.W. corner of Tract 12, Olympic Park Addition in Stanfield. Measured at right angles 30 feet South to the center of Ball Ave. and set a point. Found I.P. at S.E. corner of Tract 146 in same addition and set another point 30 ft. south. On this established centerline I run N.89°-42'E and found a very old cedar stake on line and distance according to the official plat, so I feel there is no doubt as to this point being the true corner of sections 32-33-5-4.

Also measured westerly along the centerline of Ball Ave. approx. 848.6 feet from the point 30 ft. south of the S.W. Corner of the said Tract 12 and found a $\frac{5}{8}$ " Iron Pin which is the South $\frac{1}{4}$ corner of Sec. 32.

On East line Sec. 32

Found a $\frac{5}{8}$ " I. Pin (East $\frac{1}{4}$ Corner) which I established in 1949. Produced East line Sec. 32 N.0°-29'E. 2628.6 feet and set a stake for a temp. corner 29-28-32-33. I ran this line on northerly 5267 feet to a fence running east and west.

Westerly on center of section

From the E. $\frac{1}{4}$ corner Sec. 32. on true bearing N.89°-48'W.

2630.7 Dug and found no trace of old corner. Set $1\frac{1}{2}$ " I.P. for center $\frac{1}{4}$ corner. I checked this point by running on a true line north on the centerline of Dunne St. and setting a $\frac{3}{4}$ " I.P. at the intersection of the centerlines of Dunne and the County Rd. the centerline of which is the Quarter line of Sec. 32. I measured 49.81 feet easterly to the center $\frac{1}{4}$ corner, which distance agrees with the distances on the official plat of Stanfield.

5272.4 Found 1" I.Pin which I previously had set in 1949 (West $\frac{1}{4}$ Cor.)

Northerly on center of section from center $\frac{1}{4}$ corner.

On random line N.0°-27'E.

2629.4 set temp. $\frac{1}{4}$ corner. Dug and found no trace of original corner.

On West line of Section 32.

2631.3 From W. $\frac{1}{4}$ corner on random line true North Set stake for temp. cor 30-29-31-32. 25 feet east found a 10"x10" x 18" granite stone protruding 6" above the ground. Uncovered it but found no markings whatever. Produced line on north along center of dirt road.

5265.7 25 feet west found a 8"x8"x10" granite rock with no markings. It was in a fence line lying on top of the ground and may have been moved.

On north line Sec. 32

On random line N.89°-48'W from the temp. N.E. corner Sec. 32.

2634.0 0.8 ft. south temp. N. $\frac{1}{4}$ corner.

@n North line Section 32 (Cont'd)

- 5270.1 1.4 ft. south granite stone.
- 5295.4 Temp. cor 29-30-31-32.
From this temp cor on random line N.89°-48'W.
- 655 Fence line running south. 20 ft. north fence line running parallel with random line.
- 2645 Rence running N & S.
- 5828 Found hub with lath marking Section corner 25-30-36-31.
From this corner on true bearing of S.89°-49'E.
- 5840.7 Set $1\frac{1}{2}$ " I.P for the corner 29-30-31-32 at proportionate distance with the original distance from the N.E. corner of Section 32 to the N.W. corner of Section 31.
From this N.E. corner of Section 32 on same true bearing of S.89°-49'E. (Fence line 20 ft. south runs parallel)
- 2641.35 Set $1\frac{1}{2}$ " I.P. for N. $\frac{1}{4}$ corner Sec. 32.
- 5282.7 The corner 28-29-32-33.