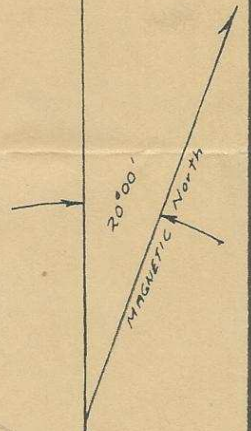
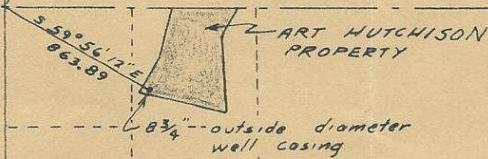


SECTION 1, TWN 2 S, R 31 E.W.M.

A 4"x6"x10" stone with "1/4" chisled on its surface was found in the middle of a circle of stones which was reset by Nat Kimbrell, then County Surveyor, in a survey about 1900 according to Frank Cable and witnessed by Stanley G. Wallulis, Donald L. Staebler and Mts. Hutchison.

We set a 5/8" X 30" iron rod 500 feet to the East & south of true corner for reference corners. said pins are about 4" above ground.



Q-888-Ax

Stanley G. Wallulis

I, STANLEY G. WALLULIS, OF PENDLETON, OREGON DO HEREBY CERTIFY THAT THIS MAP WAS MADE FROM NOTES TAKEN DURING AN ACTUAL SURVEY MADE BY ME ON September 13, 1961; THAT THE MONUMENT SHOWN ON THIS MAP CONSISTING OF A 8 3/4" outside dia. well casing IS S 59° 56' 12" E FROM the West 1/4 corner of section 1 (COR OF U.S. LAND SURVEY TO WHICH TIE IS MADE)

SIGNATURE Stanley G. Wallulis

SURVEY FOR ARTHUR HUTCHISON	
SCALE: 1" = 1000'	DATE: 9-13-61
STANLEY G. WALLULIS CONSULTING ENGINEER P. O. BOX 91 PENDLETON, OREGON	

original

9/14/61