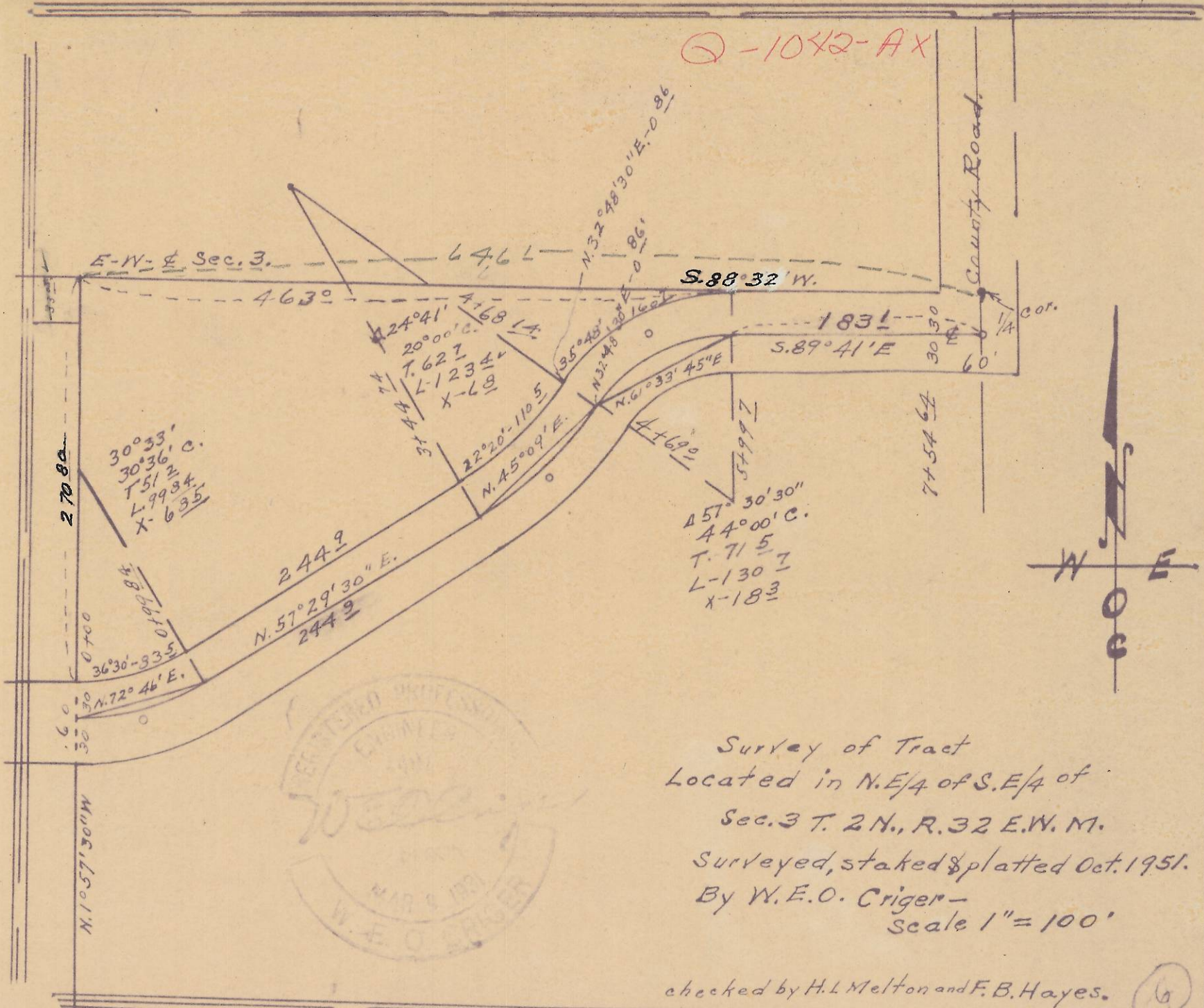


Q-1042-AX



Survey of Tract
 Located in N.E/4 of S.E/4 of
 Sec. 3 T. 2 N., R. 32 E. W. M.
 Surveyed, staked & platted Oct. 1951.
 By W. E. O. Criger -
 Scale 1" = 100'

checked by H. L. Melton and F. B. Hayes.

6

1/24/1952

W. E. O. CRIGER

CONSULTING ENGINEER

For a tract in the N.E. 1/4 of the S.E. 1/4 of Sec. 3, T.2N., R. 32 E.W.M.

I set up on the E-W. $\frac{1}{2}$ of Sec. 3, where it intersects with the northward extended W. line of north Main Street, city of Pendleton, Oregon.

I then ran S. on said west line of N. Main St., 270 $\frac{3}{4}$ ft., to the N. line of N.W. Johns Ave., Then I ran around a 157 $\frac{2}{4}$ ft. radius curve left on the North R/W line of the County Road 83 $\frac{8}{4}$ ft., long chord bear - N. 72° 46' E.

Then I ran N. 57° 29' 30" E on said N. R/W. line 195 $\frac{8}{3}$ ft., Then I ran around a 256 $\frac{4}{8}$ ft., Radius curve left 110 $\frac{5}{4}$ ft., long chord of which bears N. 45° 09' E.,

Then I ran N. 32° 48' 30" E, 3 $\frac{5}{2}$ ft., on said N. R/W. line; then I ran around a 160 $\frac{2}{2}$ ft. radius curve right 155 $\frac{8}{3}$ ft., the long chord of which bears N. 60° 40' 45" E., on said N. R/W. line to an intersection with the E-W. $\frac{1}{2}$ of Sec. 3,

Then I ran S. 88° 32' W., on said E-W. $\frac{1}{2}$ of Sec. 3 - 462 $\frac{9}{7}$ ft., to the point of beginning.

Jack Stangier to Chas. Hester.

Q-1042-A