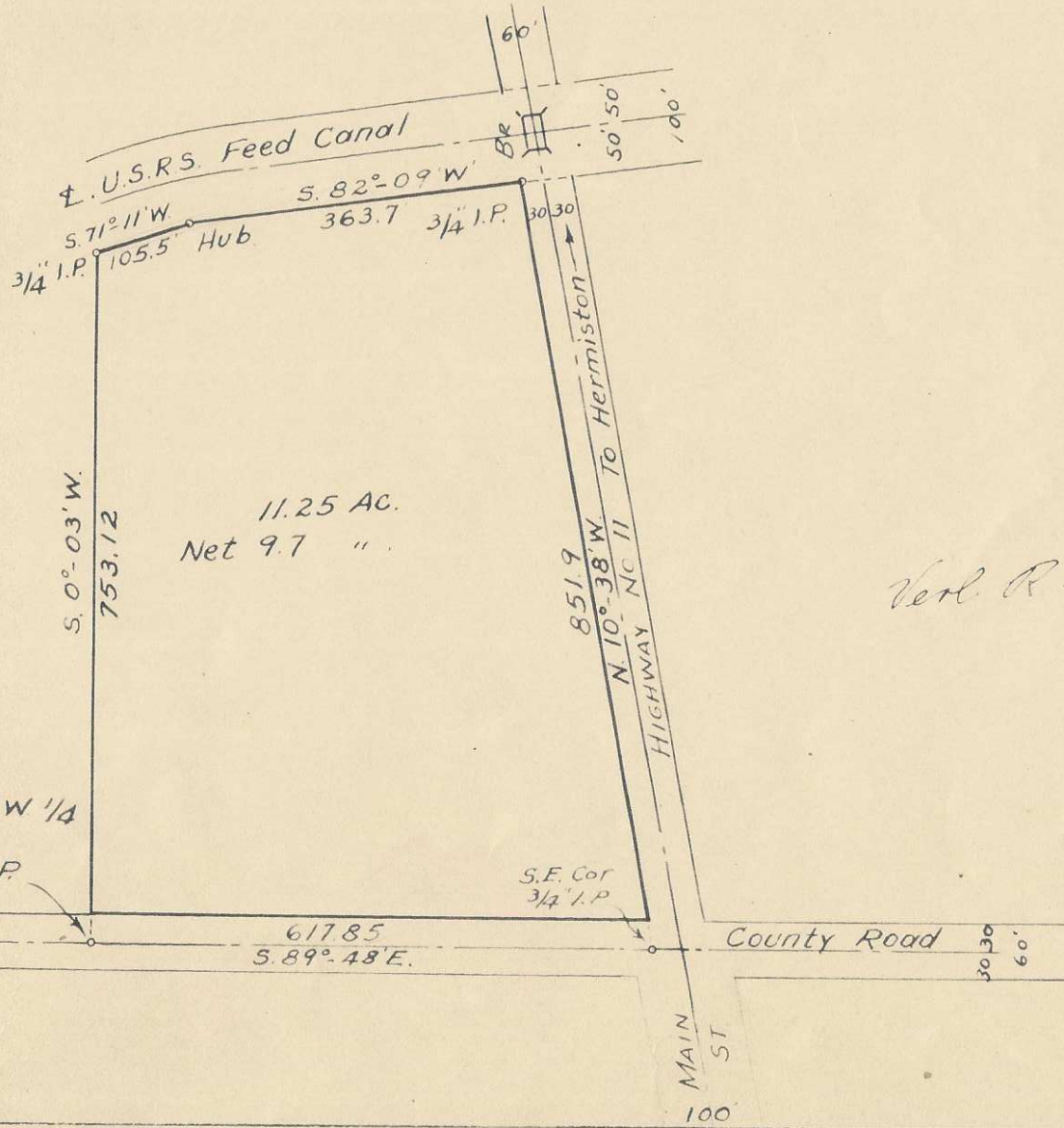


Q-1254-Ax

MAP OF A TRACT OF LAND IN STANFIELD UMATILLA COUNTY, ORE.

IN S.E. 1/4 OF N.W. 1/4 SEC. 32, T.4N., R.29E., W.M.

SCALE: 1" = 200'



Verl R. Fraley
No 1830

31 | 32 1320.85
1" I. Pin
W 1/4 Cor Sec 32

Q-1254-Ax