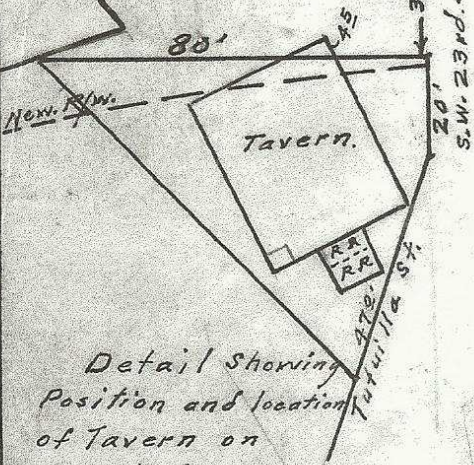


R.B. Monument No. 2.
 & S.W. Emigrant.

State Hwy. 395



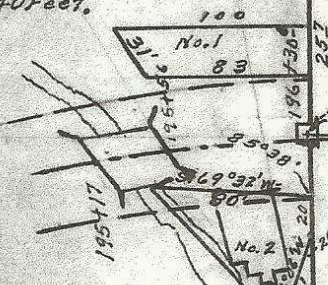
Detail Showing
 Position and location
 of Tavern on
 Tract No. 2.
 Scale 1 inch = 40 Feet.

RESERVATION BOUNDARY
 S.W. 23rd St. 30'

50.01	12	29	5	100
"	11		6	
"	10		7	
50.01	9		8	

50.01	12	38	5	100
"	11		6	
"	10		7	
50.01	9		8	

S.W. 22nd St. 60'

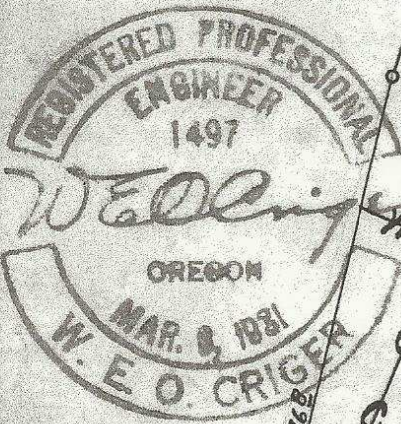


S.W. E. MIGRANT AVE.

50.01	14		1
"	13		2
"	12		3
"	11	30	4
"	10		5
"	9		6
50.01	8		7

50.01	14		1
"	13		2
"	12		3
"	11	94	4
"	10		5
"	9		6
50.01	8		7

- 27-0° 27'
- 54-1° 14'
- 81-1° 51'
- 108-2° 28'
- 135-3° 05'
- 162-3° 42'
- 189-4° 19'



Plat Showing
 Two descriptive tracts in the
 N.E. 1/4 of S.E. 1/4 of Sec. 9, T. 2N., R. 32 E., W. 1M.
 Surveyed, Staked and Platted, Oct. 1947.
 By W. E. O. Criger, Ore. Reg. C. E., No. 1497.
 Scale: 1 inch = 100 Ft.

N 0° 55' W - 827 To
 S. E. Cor. Sec. 9
 N 90° 41' W - 3962

8° 46' (Wrong)

Q-1441-Ax