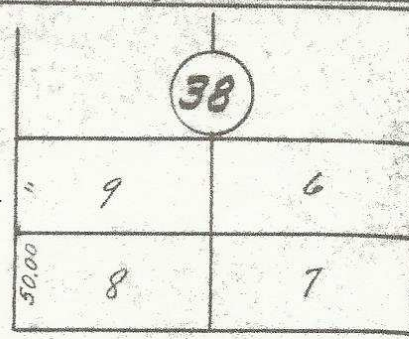
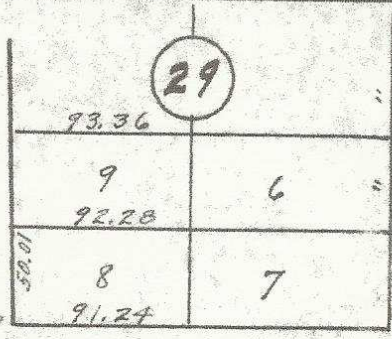
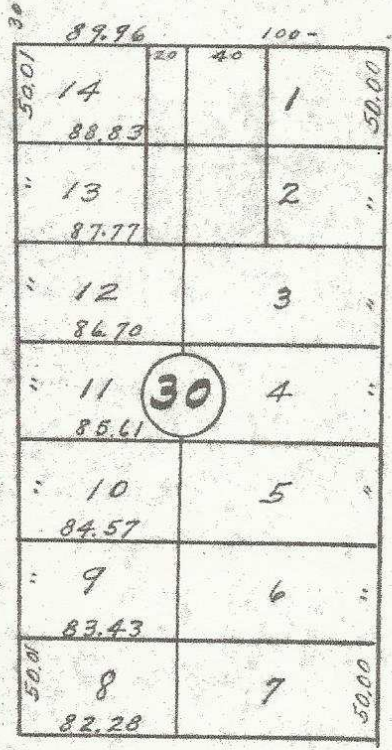


Monument No. 2

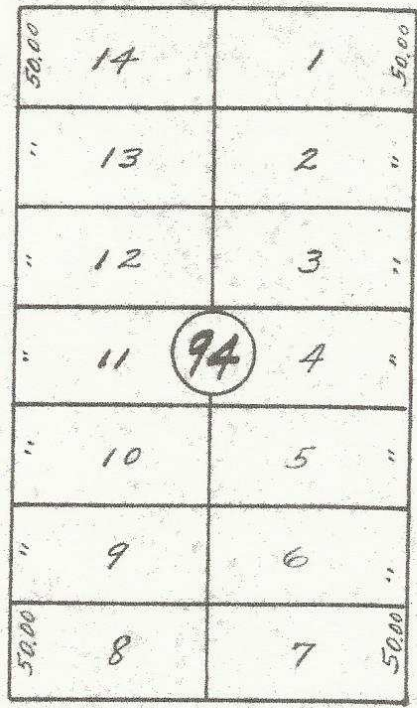
RESERVATION BOUNDARY
(Tutilla Ave.) S.W. 23rd St.



S.W. EMIGRANT AVE.

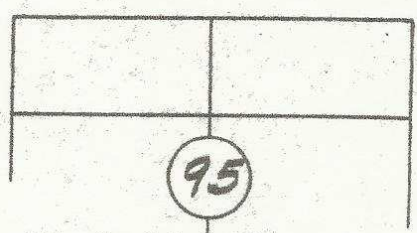
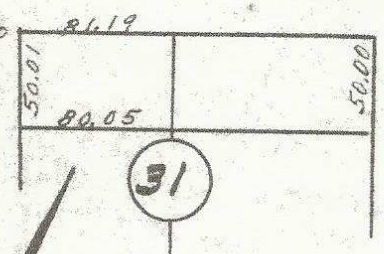


S.W. 22nd St.

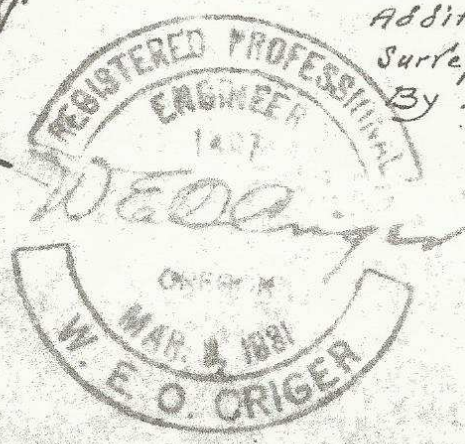


S.W. 21st St.

S.W. FRAZIER AVE.



Plat Showing
 Block 30 of Reservation
 Addition to City of Pendleton, Ore.
 Surveyed, Staked and platted,
 By W.E.D. Criger, Ore. Reg. C.E. No. 1491.
 Scale: 1 inch = 100 Ft.



2032 10 CB

Q-1476-Ax