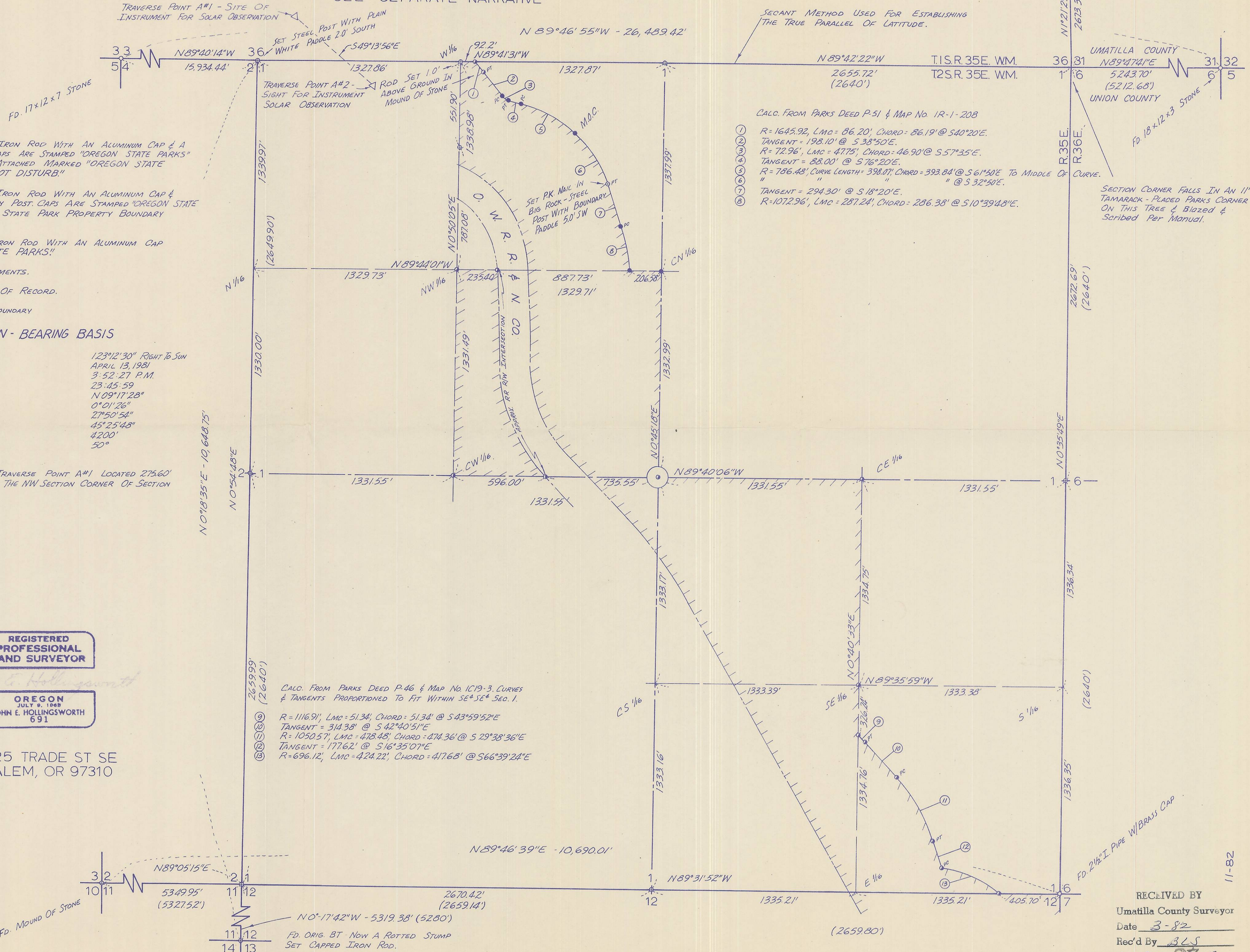


OREGON STATE PARKS & RECREATION DIVISION
 BLUE MOUNTAIN FOREST WAYSIDE
 SECTION 1, T.2S, R.35E, W.M.
 UNION COUNTY

SCALE 1" = 400'

DATE 3-1-82

SEE SEPARATE NARRATIVE



- INDICATES SET 3/8" x 30" IRON ROD WITH AN ALUMINUM CAP & A STEEL BOUNDARY POST. CAPS ARE STAMPED "OREGON STATE PARKS" & POSTS HAVE A PADDLE ATTACHED MARKED "OREGON STATE PARK BOUNDARY DO NOT DISTURB"
- INDICATES SET 5/8" x 30" IRON ROD WITH AN ALUMINUM CAP & A 7' FIBERGLASS BOUNDARY POST. CAPS ARE STAMPED "OREGON STATE PARKS" & POSTS HAVE A STATE PARK PROPERTY BOUNDARY DECAL ATTACHED.
- INDICATES SET 3/8" x 30" IRON ROD WITH AN ALUMINUM CAP STAMPED "OREGON STATE PARKS"
- INDICATES FOUND MONUMENTS.
- () INDICATES INFORMATION OF RECORD.
- INDICATES STATE PARK BOUNDARY

SOLAR OBSERVATION - BEARING BASIS

AVERAGE HORIZONTAL ANGLE	123°12'30" Right To Sun
DATE	APRIL 13, 1981
STANDARD TIME	3:52:27 P.M.
LCT	23:45:59
SUN'S DECLINATION	N 09°17'28"
REFRACTION CORRECTION	0°01'26"
SUN'S ALTITUDE	27°50'54"
LATITUDE	45°25'48"
ELEVATION	4200'
TEMPERATURE	50°

PLACE OF OBSERVATION - TRAVERSE POINT A#1 LOCATED 275.60' NORTH & 243.67' EAST OF THE NW SECTION CORNER OF SECTION 1, T.2S, R.35E, W.M.

REGISTERED PROFESSIONAL LAND SURVEYOR

OREGON
 JULY 9, 1859
 JOHN E. HOLLINGSWORTH
 691

525 TRADE ST SE
 SALEM, OR 97310

UNION COUNTY SURVEYOR
 D. 13-82
 D. 12-82
 BY G. LANGLITZ, DEPUTY
 FILE NO. 11-82

REFER TO REMONUMENTATION RECORDS FOR NARRATIVE

CALC. FROM PARKS DEED P-51 & MAP No. 1R-1-208

1	R=1645.92, LMC=86.20', CHORD=86.19' @ S40°20'E.
2	TANGENT=198.10' @ S38°50'E.
3	R=72.96', LMC=47.75', CHORD=46.90' @ S57°35'E.
4	TANGENT=88.00' @ S76°20'E.
5	R=786.43', CURVE LENGTH=398.07', CHORD=393.84' @ S61°50'E TO MIDDLE OF CURVE.
6	" " " " @ S32°50'E.
7	TANGENT=294.30' @ S18°20'E.
8	R=1072.96', LMC=287.24', CHORD=286.38' @ S10°39'48"E.

CALC. FROM PARKS DEED P-46 & MAP No. 1C19-3. CURVES & TANGENTS PROPORTIONED TO FIT WITHIN SE & SE 4 SEC. 1.

9	R=1116.91', LMC=51.34', CHORD=51.34' @ S43°59'52"E
10	TANGENT=314.38' @ S42°40'51"E
11	R=1050.57', LMC=478.48', CHORD=474.36' @ S29°38'36"E
12	TANGENT=177.62' @ S16°35'07"E
13	R=696.12', LMC=424.22', CHORD=417.68' @ S66°39'24"E

RECEIVED BY
 Umatilla County Surveyor
 Date 3-82
 Rec'd By BLS
 No. 82-87-B
 NO REPO

82-87-B
 2 S R 35, Sec. 1
 11-82

UNION COUNTY SURVEYOR

HOWARD L. PERRY

P.O. Box 1107 Phone (503) 963-8309

LA GRANDE, OREGON 97850

March 17, 1982

Job No. 690-01

State of Oregon
Department of Transportation
Parks and Recreation Division
525 Trade Street S.E.
Salem, Oregon 97310

Attn: Mr. John E. Hollingsworth, L.S.

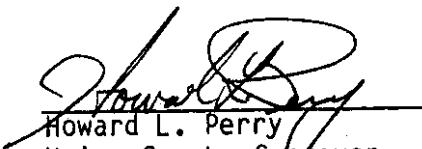
Dear Mr. Hollingsworth:

I have received and filed the survey map and narrative concerning your survey located in Section 1, T.2S., R.35E., W.M., Union County, Oregon. As I inspected this survey, it became apparent that a considerable amount of survey line was retraced before recovering prior survey corners. A brief inspection of the original government survey records indicates that several surveys were conducted along the north boundary of this township and in conjunction with the Umatilla Indian Reservation boundary. Although you are more familiar with the survey situation in this area than I am, my concern as Union County Surveyor is to insure that all possible combinations of survey control, including proportionate measurement, be evaluated to develop restored corner locations that will be in harmony with the evidence reported in the original surveys. Some of these possible combinations might include the use of topographic calls and closing corners established in the subdivisions of the adjoining townships. We are not necessarily questioning the validity of this survey. Our desire is to work with the surveyor to make all surveys and survey records as thorough as possible for the benefit of the public and future surveys in the area.

The Union County Surveyor's office is presently reorganizing its survey records and formulating policies and procedures for survey review and filing and recordation of restored government corners. I will place your name on our mailing list to receive information from this office for your use in future surveys in Union County.

Thank you for your cooperation.

Very truly yours,


Howard L. Perry
Union County Surveyor

cc: David H. Krumbein
Umatilla County Surveyor
P.O. Box 1146
Pendleton, Oregon 97801

OREGON STATE PARKS AND RECREATION DIVISION

SURVEY
BLUE MOUNTAIN FOREST WAYSIDE
Section 1, T2S, R35E, W.M.
Union County, Oregon
March 1, 1982

SURVEY NARRATIVE

The purpose of this survey was to establish and monument the park boundary in the NW $\frac{1}{4}$ and SE $\frac{1}{4}$ of Section 1, T2S, R35E. Control for the survey was established using a Jena one-minute theodolite with a Mac II-H electronic distance measuring instrument. Bearing control was established by solar observation.

Approximate locations for the NW corner and NE corner of Section 1 had been established by private lumber companies.

The three lost section corners of Section 1 were established in accordance with the 1973 Manual of Surveying Instructions. This involved identifying and tying the nearest original corners on all four sides of the section corner to be set. The secant method was used for establishing the true parallel of latitude along the Township line in Section 1. The subdivision of section 1 was then calculated and monumented as shown on the accompanying plat.

The section and $\frac{1}{4}$ section corners falling between the section corner common to Sections 1 & 2 and the section corner common to Sections 4 & 5 were searched for but not found. Also, the $\frac{1}{4}$ section corners common to Sections 2 & 11, 11 & 12, and 6 & 31 were searched for but not found.

CORNER INFORMATION

Magnetic Variation 20 $\frac{1}{2}$ °

Section Corner $\frac{33}{5/4}$ T1-2S, R35E

Original:

Set a basalt stone 17x12x7 ins. 12 ins. in the ground for corner to sections 4 and 5 marked with 4 notches on E. and 2 on W. edges and raised a mound of stone 2 ft. at base 1 $\frac{1}{2}$ ft. high S. of corner. Pits impracticable.

Parks Survey Crew found:

Stone 17x12x7 with 4 notches on East face and 2 notches on West face and s.c. on South face.

Parks Survey Crew set:

23" fir S75°W, 12.3' to center, scribed "T2S R35E S5 BT" - placed a yellow Parks corner tao on this BT.
9" fir S35°E, 21.2' to center, scribed "T2S R35E S4 BT"
13" fir N20°E, 17.9' to center, scribed "T1S R35E S33 BT RS 691"

Section Corner $\frac{36}{2/1}$ T1-2S, R35E

Original:

Set post 4 $\frac{1}{2}$ ' long 4" sq. 2' in ground marked: "T1S S 36" on NE, "R35E S1" on SE, "T2S S2" on SW and "S35" on the NW face with 1 notch on the E and 5 notches on the W face.

12" pine bears S21°E, 14 lks. (T2S R35E S1 BT)
9" pine bears S5°W, 22 lks. (T2S R35E S2 BT)
13" pine bears N2°W, 12 lks. (T1S R35E S35 BT)
9" pine bears N82°E, 28 lks. (T1S R35E S36 BT)

UNION COUNTY SURVEYOR	
Date Received	<u>3-11-82</u>
Date Filed	<u>3-16-82</u>
By	<u>G. LANGRISH, DEPUTY</u> REFER TO SURVEY
File No.	<u>11-82</u>

Blue Mountain Forest Wayside Survey
Section 1, T2S, R35E, W.M.
Union County
March 1, 1932
page 2 of 7

Parks Survey Crew found:

21" spruce with Louisiana Pacific approximate section corner tag -- nothing of original bearing trees.

Parks Survey Crew set:

5/8"x30" iron rod with aluminum cap marked "OREGON STATE PARKS". Set a steel post with a plain white paddle 2.0' south of iron rod.

21" spruce S68°W, 75.7' to center, scribed "T2S R35E S2 BT RS691" - placed a yellow Parks corner tag on this BT (Same tree as mentioned above).

7" pine S34°E, 56.7' to center, scribed "T2S R35E S1 BT"

8" pine N10°W, 128.1' to center, scribed "T1S R35E S36 BT"

W 1/16 Corner Section 1 only - North Line

Parks Survey Crew set:

5/8"x30" iron rod with aluminum cap marked "OREGON STATE PARKS". Set 1.9' above ground and erected a mound of stone around the iron rod. Too rocky to set steel post.

23" pine S6°E, 31.1' to center, scribed "W1/16 S1BT RS691"

23" pine S56½°E, 145.3' to center, scribed "W1/16 S 1 BT" - placed a yellow Parks corner tag on this BT.

N ¼ Corner Section 1 (only)

Original:

Set post 3½' long 3" sq. 18" in ground for ¼ Section Corner marked "¼ S" on N & S faces in a marshy bog.

16" fir bears N43°W, 58 lks., marked "¼ S BT"

15" spruce bears S75°E, 40 lks., marked "¼ S BT"

Parks Survey Crew found:

nothing

Parks Survey Crew set:

5/8"x30" iron rod with aluminum cap marked "OREGON STATE PARKS"

13" fir S38°W, 26.4' to center, scribed "¼ S1 BT RS691"

13" spruce S40°E, 21.6' to center, scribed "¼ S1 BT" - placed a yellow Parks corner tag on this BT.

Township Corner 1, 6, 31 and 36

Original:

Set pine post 5' long, 5" sq. 2' in ground for corner.

12" fir bears N64°W, 24 lks.

8" pine bears N17°W, 21 lks.

8" pine bears N23°E, 35 lks.

10" pine bears S65°E, 14 lks.

Parks Survey Crew found:

Nothing.

Parks Survey Crew set:

Section corner falls in an 11" Tamarack. Put corner tag on this tree and scribed as follows:

On NW face "T1S R35E S36"
On NE face "T1S R36E S31"
On SE face "T2S R36E S6"
On SW face "T2S R35E S1"

19" fir S17°W, 19.2' to center, scribed "T2S R35E S1 BT" - placed a yellow Parks corner tag on this BT.
17" fir S60°E, 25.1' to center, scribed "T2S R36E S6 BT"
12" tamarack N75°E, 16.9' to center, scribed "T1S R36E S31 BT RS691"
11" tamarack N65°W, 8.3' to center, scribed "T1S R35E S36 BT"

W ¼ Corner Section 31 (only) T1S, R36E

Original:

Set post 3½' long 3 ins. square 18 ins. in the ground for ¼ section corner marked ¼ S on E and W faces

12" fir bears S54°W, 7 lks. dist., marked "¼ SBT"
13" fir bears N14°E, 7 lks. dist., marked "¼ SBT"

Parks Survey crew found:

1½" I. pipe with brass cap marked "OREGON STATE BOARD OF FORESTRY" -
"¼/S31 1969 RS 359"
4" x 4" white post 2.0' SW of corner

19" fir bears S14°W, 35.0' to center, scribes visible "¼S31 BT RS 359"
14" fir bears S10°E, 42.1' to center, scribed "¼ S 31 BT" - Oregon State Board of Forestry tag on this tree.

Section Corner 5, 6, 31 and 32 T1&2S, R36E

Original:

Set basalt stone 13x12x3 3 in. in ground for corner.

7" pine bears N45°W, 3 lks.
10" pine bears N58°W, 13 lks.
12" pine bears S52°W, 33 lks.
8" pine bears S59°E, 21 lks.

Parks Survey crew found:

13x12x3 stone with red paint on top

16" fir bears S47°E, 12.3' to center with Forest Service tag.
Tree has scars on all four sides.

NW 1/16 Section 1

Parks Survey crew set:

5/8"x30" iron rod with aluminum cap marked "OREGON STATE PARKS".
A 7' fiberglass boundary post with a state park property boundary decal marked "PROPERTY BOUNDARY - STATE PARK LAND BEHIND THIS SIGN" 2.0' SE of iron rod.

9" fir S43°W, 3.6' to center, scribed "NW1/16 S1 BT RS691"
14" spruce S32°E, 15.3' to center, scribed "NW1/16 S 1 BT" - placed a yellow Parks corner tag on this BT.

CN 1/16 Section 1

Parks Survey crew set:

5/8"x30" iron rod with aluminum cap marked "OREGON STATE PARKS" 0.5' above ground. Set a galvanized steel post with a paddle marked "OREGON STATE PARK BOUNDARY DO NOT DISTURB" 2.0' west of iron rod.

An 11" fir N30°W, 12.4' to center scribed, "CN1/16 S1 BT RS691"

An 11" fir N20°W, 19.0' to center scribed, "CN1/16 S1 BT" - placed a yellow Parks corner tag on this BT.

Quarter Corner Between 1 and 2

Original:

Set post 3' long, 3" square, 24" in ground for ¼ Section Corner.

Marked "¼S" on W face from which a 9" fir bears S61°E, 27 lks., marked "¼S BT"

A 7" fir bears S55°W, 20 lks., marked "¼S BT"

Parks Survey crew found:

Nothing of original

Parks Survey crew set:

5/8" x 30" iron rod with aluminum cap marked "OREGON STATE PARKS"

An 8" fir N24°W, 10.8' to center, scribed "¼ S2 BT RS691"

A 10" fir S57°E, 11.9' to center, scribed "¼ S1 BT" - placed a yellow Parks corner tag on this BT.

CW 1/16 Section 1

Parks Survey crew set:

5/8"x30" iron rod with aluminum cap marked "OREGON STATE PARKS."

A 7' fiberglass boundary post with a state park boundary decal marked "PROPERTY BOUNDARY - STATE PARK LAND BEHIND THIS SIGN" 2.0' NE of iron rod.

A 6" fir N22½°E, 5.1' to center, scribed "CW1/16 S1 BT" - placed a yellow Parks corner tag on this BT.

A 6" fir S55°W, 23.8' to center, scribed "CW1/16 S1 BT RS691"

Center-Quarter Corner Section 1

Parks Survey crew set:

5/8"x30" iron rod with aluminum cap marked "OREGON STATE PARKS".

A 7' fiberglass boundary post with a state park boundary decal marked "PROPERTY BOUNDARY - STATE PARK LAND BEHIND THIS SIGN" 2.0' SW of iron rod.

A 17" fir N76°W, 24.8' to center, scribed "C¼ S1 BT RS691"

A 15" pine S24°W, 10.3' to center, scribed "C¼ S1 BT" - placed a yellow Parks corner tag on this BT.

CE1/16 Section 1

Parks Survey crew set:

5/8"x30" iron rod with aluminum cap marked "OREGON STATE PARKS".

A 7' fiberglass boundary post with a state park boundary decal marked "PROPERTY BOUNDARY - STATE PARK LAND BEHIND THIS SIGN" 2.0' SW of iron rod.

A 23" ponderosa pine S33°W, 13.8' to center, scribed "CE1/16 S1 BT" - placed a yellow Parks corner tag on this BT.

A 21" ponderosa pine S82°W, 18.0' to center, scribed "CE1/16 S1 BT RS691"

Quarter Corner between 1 and 6

Original:

Set pine post 4' long, 3" thick, 2' in ground for $\frac{1}{4}$ Section Corner.
20" pine bears N63°W, 44 lks.
24" fir bears N70°E, 48 lks.

Parks Survey crew found:

Nothing

Parks Survey crew set:

5/8"x30" iron rod with aluminum cap marked "OREGON STATE PARKS"
A 15" fir S29°E, 9.5' to center, scribed " $\frac{1}{4}$ S6 BT RS691"
A 15" tamarack S30°W, 40.1' to center, scribed " $\frac{1}{4}$ S1 BT"
Placed a yellow Parks corner tag on both BT's.

SE 1/16 Section 1

Parks Survey crew set:

5/8"x30" iron rod with aluminum cap marked "OREGON STATE PARKS".
A 7' fiberglass boundary post with a state park boundary decal marked
"PROPERTY BOUNDARY - STATE PARK LAND BEHIND THIS SIGN" 2.0' west of iron rod.
A 12" douglas fir N37°W, 19.2' to center, scribed "SE1/16 S1 BT RS691"
An 11" white fir S85°W, 15.0' to center, scribed "SE1/16 S1 BT" - placed a
yellow Parks corner tag on this BT.

Section Corner 2, 3, 10 and 11

Original:

Set basalt stone 12x10x8 ins. 8" in ground. Marked with 5 notches on south
and 2 notches on east edges from which a:

40" fir bears N69°W, 159 lks.. marked "T2S R35E S3 BT" - raised a mound
of stone alongside.

Parks Survey crew found:

Rotted fir stump with an old corner tag stuck in top -- no trace of scribe
since stump has deteriorated. Found a mound of stone S69°E, 105' from stump -
no corner stone.

Parks Survey crew set:

Measured 104.94' at S69°E from rotted fir stump (fell in mound of stone) and
set 5/8"x30" iron rod with aluminum cap marked "OREGON STATE PARKS".

An 18" fir S3 $\frac{1}{2}$ °E, 63.4' to center scribed "T2S R35E S11 BT". This tree is
on the edge of a bank North of the road.

A 14" fir S28°W, 76.2' to center scribed "T2S R35E S10 BT". This tree is
the larger of a double 14" and 10".

A 23" fir N43°W, 106.5' to center scribed "T2S R35E S3 BT RS691" - Parks corner
tag on this tree.

A 6" pine N21°E, 146.8' to center scribed "T2S R35E S2 BT"

Section Corner 1, 2, 11 and 12

Original:

Set post 4' long, 4" square, 24" in ground, marked "T2S R35E" on E,
"T2S R35E S2" on W, "S11" on SW and "S12" on SE with 5 notches on S and
1 on E edges from which a:

A 5" fir bears N67°E, 29 lks., marked "T2S R35E S1 BT"
A 10" tamarack bears N55°W, 35 lks., marked "T2S R35E S2 BT"
A 10" pine bears S18°W, 40 lks., marked "T2S R35E S11 BT"
An 8" pine bears S23°E, 57 lks., marked "T2S R35E S12 BT"

Parks Survey crew found:

Nothing.

Parks Survey crew set:

5/8"x30" iron rod with aluminum cap marked "OREGON STATE PARKS"
14" and 16" double fir N33°W, 22.0' to center scribed "T2S R35E S2 BT RS691" -
scribe on east fir
11" fir N67°E, 71.5' to center scribed "T2S R35E S1 BT"
12" fir S84°E, 67.0' to center scribed "T2S R35E S12 BT"
7" fir S29°W, 32.0' to center scribed "T2S R35E S11 BT" - placed a yellow Parks
corner tag on this BT.

Section Corner 11, 12, 13 and 14

Original:

Set post 4' long, 4" square, 24 inches in ground, marked "T2S R35E S12" on NE,
"T2S R35E S11" on NW, "S14" on SW and "S13" on SE faces with 4 notches on S and
1 notch on E edges from which:

A 9" fir bears N52°E, 18 lks. marked, "T2S R35E S12 BT"
A 4" fir bears N59°W, 44 lks. marked, "T2S R35E S11 BT"
A 10" pine bears S77°W, 16 lks. marked, "T2S R35E S14 BT"
A 10" fir bears S30°E, 23 lks. marked, "T2S R35E S13 BT" (now a rotted stump)

Parks Survey crew found:

14" fir bears N4°W with Forest Service corner tag 14.6'

Found stump hole N52°E, 12'.

Found a rotted stump with a chunk of wood approximately 4' long lying at the
side of the stump. One side has Forest Service BT tags nailed on it. The
other side was the original blaze face with scribes visible - "T2S R35E S13 BT"

Parks Survey crew set:

Measured 15.18' at N30°W from the rotted stump with the original blaze and
set 5/8"x30" iron rod with aluminum cap marked "OREGON STATE PARKS"

A 14" fir N4°W, 14.6' to center, scribed "T2S R35E S11 BT"
An 8" fir N68°E, 27.7' to center, scribed "T2S R35E S12 BT" (A no trespass
sign is attached to this tree.)
A 10" pine S77°E, 39.1' to center, scribed "T2S R35E S13 BT RS691" - placed a
yellow Parks corner tag on this BT.
A 10" fir S10°W, 63.8' to center, scribed "T2S R35E S14 BT"

Quarter Corner between 1 and 12

Original:

Set a post 3' long, 3" square, 24 inches in ground for ¼ Section Corner
marked "¼S" on W face from which:

A 10" fir bears N35°W, 49 lks., marked "¼S BT"
A 10" fir bears S5°W, 23 lks., marked "¼S BT"

Parks Survey crew found:

No trace of original.

Parks Survey crew set:

5/8" x 30" iron rod with aluminum cap marked "OREGON STATE PARKS"

A 6" fir N46°W, 4.4' to center, scribed "S $\frac{1}{4}$ S1 BT RS691" - placed a yellow Parks corner tag on this BT.

A 6" fir S2°W, 11.2' to center, scribed "N $\frac{1}{4}$ S12 BT"

Section Corner 1, 6, 7 and 12

Original:

Set basalt stone 13x12x8 3 inches in ground and made a mound of stone 2' high for corner.

A 20" pine bears N35°W, 38 lks. (now a stump)

An 13" pine bears N41°E, 103 lks.

A 20" fir bears S46°E, 15 lks. (now a stump)

Parks Survey crew found:

2 $\frac{1}{2}$ " I. pipe with a 3" brass cap in mound of stone marked "COR T2S R35E R36E S1 S6 S7 S12 ORE LIC 381"

Found 13x12x8 stone with 5 notches inside mound.

Found old 30" fir stump S50°E, 11.0' to center, with visible scribe.

Found old 20" pine stump N38°W, 25.7' to center, with visible scribe.

Parks Survey crew set:

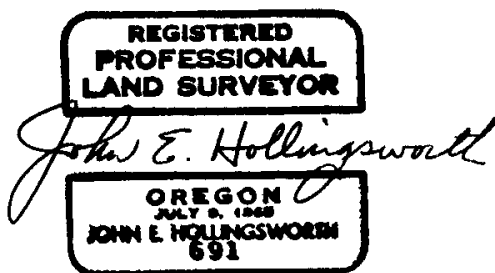
14" pine N45°W, 31.2' to center.

11" pine S50°W, 9.5' to center.

15" pine N14°E, 27.2' to center.

15" pine S54°E, 27.5' to center.

BLM BT tags on all trees and scribed per the Manual of Instructions.



John E. Hollingsworth
Oregon State Parks
525 Trade Street S.E.
Salem, OR 97310