

NATIONAL FOREST LANDS

The East 1/2 of the SW 1/4 & the East 1/2 of the NE 1/4
All in section 32, T4N, R38E, W.M.

BASIS OF BEARING

Based upon the west line of the east half of the Southwest quarter being S 0°38'21"E. See survey by Ronald L. Munns for York and Key.

HISTORY OF SURVEYS

The exterior corners of section 32, of Township 4 North Range 38 East, were originally established in 1876 by George S. Pershin under G.L.O. contract number 304. The exteriors were subsequently reestablished by Otis S. Gould for the G.L.O. in July of 1939.

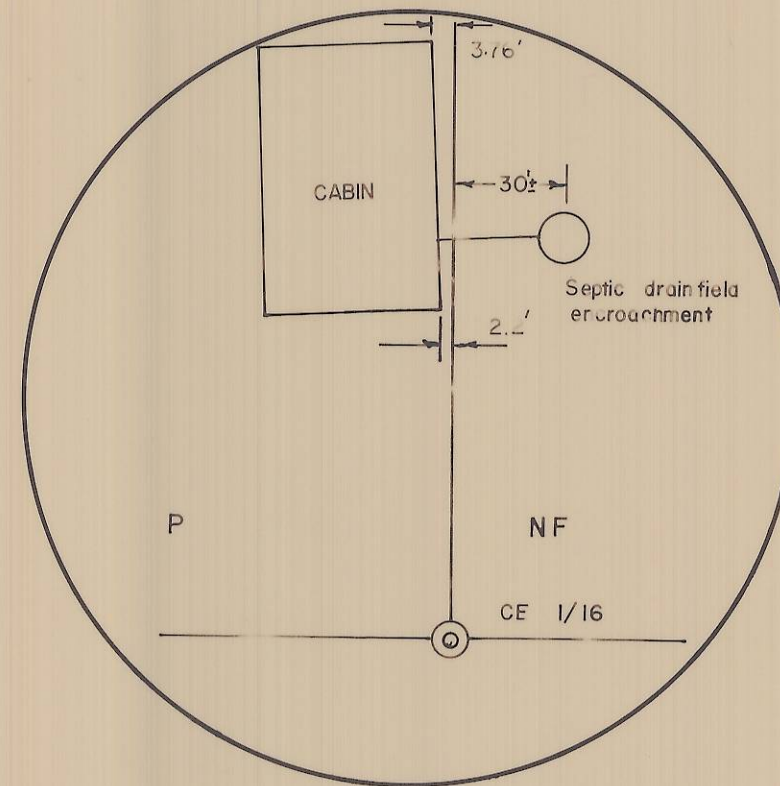
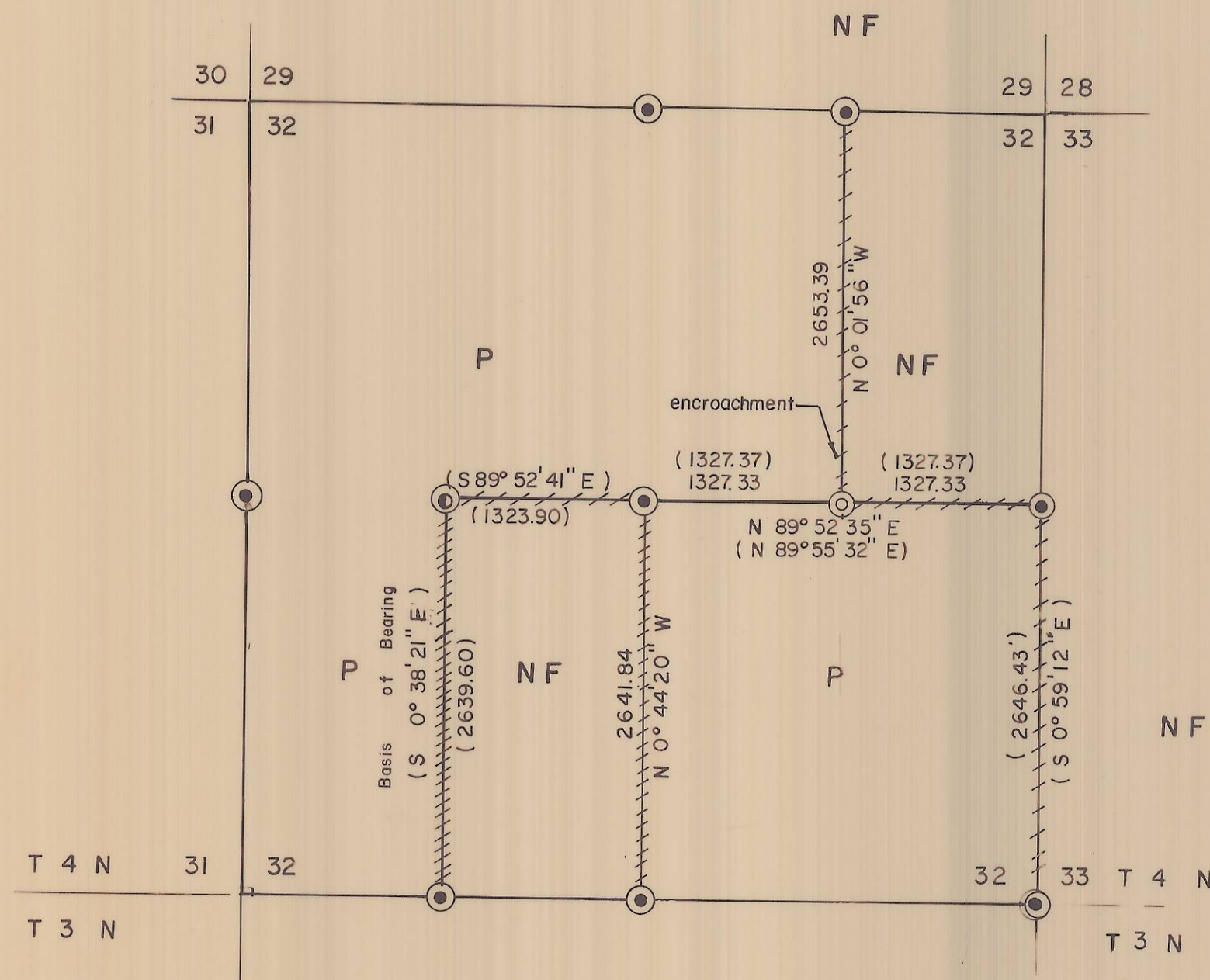
The center of section and the east 1/16 corner between sections 29 and 32 were established by Donald L. Stabler in December of 1974. See survey I-156-B.

The west 1/16 of section 32 was set by Hanley on survey number L-55-B, in the Umatilla County Surveyors office.

The centerwest 1/16 corner was originally established by Ronald L. Munns, survey dated 11-1-83 for York and Key, filed in the Umatilla County Surveyors office.

LEGEND

- ⊙ Found corner monument set by others (see history of surveys and remonumentation sheets filed separately)
- ⊙ Set 2 1/2" x 30" aluminum monument at surveyed position.
- () Record survey bearing and distance
- //// Posted National Forest Boundary line
- NF National Forest lands
- P Privately owned lands
- ⊙ Found corner monument set by others, set 2 1/2" x 30" aluminum monument.



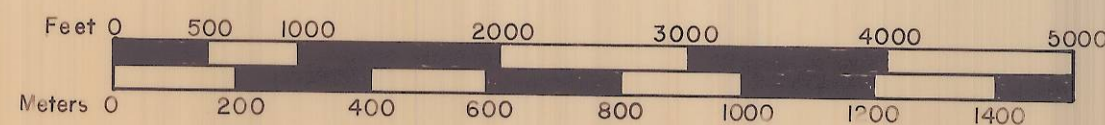
SURVEYOR'S STATEMENT

I, Gregory T. Blackman, Registered Land Surveyor in the State of Oregon, hereby certify that this plat and the notes hereon, or attached, are a true and correct representation of the survey I made in July of 1985, at the request of the USDA Forest Service, in accordance with the statutes of the State of Oregon, and with the articles of my contract.

For monumentation information, see monumentation sheets filed separately.

RECEIVED BY
Umatilla County Surveyor
Date 7-24-85
Rec'd by K.A.
No. 85-81-B
(85-827088-R insert)

Scale 1" = 1000'



1 Meter = 3.2808333 Feet

Gregory T. Blackman
OREGON
GREGORY T. BLACKMAN
34

BAGETT - GRIFFITH & ASSOCIATES -a Grande Oregon		
LOCATION OF FOREST BOUNDARIES IN SECTION 32 T 4 N R 38 E WM.		
UMATILLA COUNTY, OREGON		
SURVEYED FOR	UMATILLA NATIONAL FOREST	
SURVEYED BY	GTB	7-85
Scale: 1" = 1000'	Drawn by: GTB	7-85